

Stud/Plate Mounts



On the next several pages you will find one of the industry's largest selections of these multi-purpose mounts.

Known by many names (including bumpers, snubbers, feet, sandwich mounts, attachments, shockmounts, shearmounts, cylindrical mounts, isolators, levelers and insulators), they offer solutions to thousands of vibration and noise problems.

The configurations shown are normally available from stock. Other variables—such as materials, durometer, diameters, thread sizes, lengths or depths—are also available.

Standard material is natural rubber. Neoprene is available and is identified by an asterisk.

Maximum shear load and maximum compression load are in pounds per isolator.

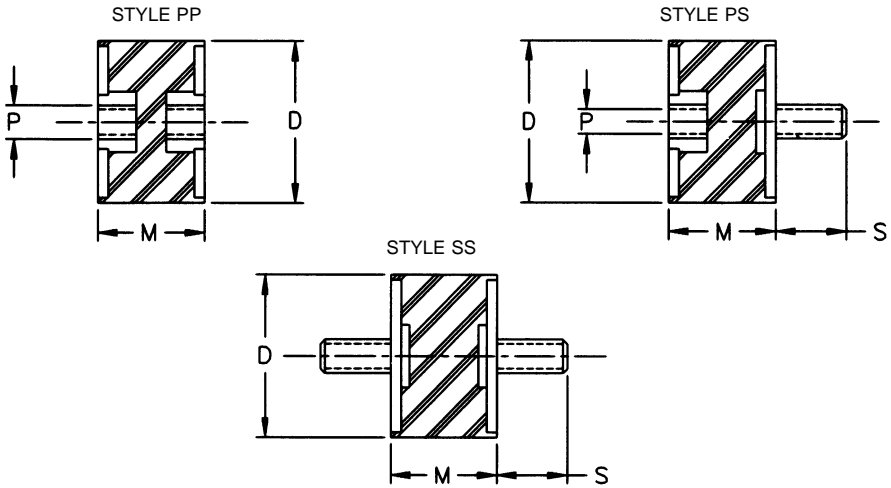
- Stud/Stud (SS) — Both ends
- Plate/Stud (PS) — Each end
- Stud (S) or Plate (P) — One end only
- Plate/Plate (PP) — Both ends
- Metric Stud/Plate Mounts
- Bumpers
- Custom Sizes Available

Maximum Tightening Torque	
UNC-THD	lbs-in
6-32	10
8-32	15
10-32	25
¼-20	53
⅝-18	105
¾-16	192
½-13	600

NOTE: Do not twist elastomer during installation

Stud/Plate Mounts

Thread Size — 6



Part No.	Style	D	M	6 - 32 x S	P (Depth)	Max. Shear (lbs.)	Max. Comp. (lbs.)
50903*	PP	9/16"	1/2"	—	6-32 (1/8")	4.5	9.5
50905*	PP	9/16"	1/2"	—	6-32 (1/8)	6	18
50907*	PP	9/16"	1/2"	—	6-32 (1/8)	9	26
50908	PP	3/8"	1/2"	—	6-32 (1/8)	3.5	4

*Neoprene

Part No.	Style	D	M	6 - 32 x S	P (Depth)	Max. Shear (lbs.)	Max. Comp. (lbs.)
50168*	PS	3/8"	1/2"	1/4"	6-32 (5/32")‡	3.4	4.4
50169*	PS	3/8"	5/16"	1/4"	6-32 (5/32)	3	4
50170*	PS	7/16"	1/2"	3/8"	6-32 (5/32)‡	4.4	6
50171*	PS	7/16"	1/2"	3/8"	6-32 (5/32)‡	3.5	4.5
50172*	PS	3/8"	5/16"	3/16"	6-32 (5/32)	3	4
50176*	PS	7/16"	1/2"	1/4"	6-32 (5/32)‡	4.4	6
50177*	PS	3/8"	5/16"	3/8"	6-32 (5/32)	4	5
50181	PS	7/16"	13/32"	1/4"	6-32 (1/8)	2.5	3.8
50184*	PS	7/16"	13/32"	1/4"	6-32 (1/8)	3.4	4.4
50194*	PS	7/16"	13/32"	1/4"	6-32 (1/8)	6.5	14.5
50986*	PS	7/16"	1/2"	1/4"	6-32 (1/8)‡	3.5	4.5

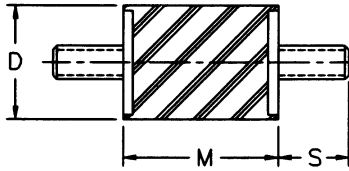
*Neoprene

‡Blind hole

Part No.	Style	D	M	6 - 32 x S	P (Depth)	Max. Shear (lbs.)	Max. Comp. (lbs.)
50178	SS	7/16"	13/32"	1/4"	—	3	4
50179	SS	7/16"	13/32"	1/4"	—	3.2	5
50196	SS	7/16"	13/32"	1/4 - 3/8"	—	3	4

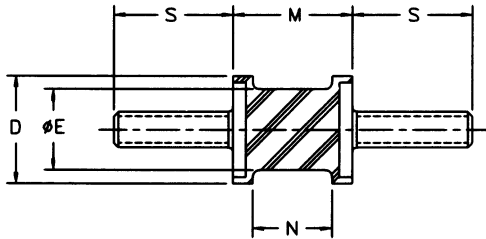
Stud/Plate Mounts

Thread Size — 8



Part No.	D (Square)	M	8-32 x S	Max. Shear (lbs.)	Max. Comp. (lbs.)
51001	3/8"	1/2"	3/8"	3	5
51002	3/8	1/2	3/8	3.6	6.2
51003	3/8	1/2	3/8	5.7	10
51004	3/8	1/2	3/8	7	13.5
51007*	3/8	5/16	3/8	4	6.2
51010	3/8	5/16	7/32	9	13
51011	3/8	5/16	7/32	3	4.5
51013	3/8	5/16	7/32	4	6.2
51014*	3/8	5/16	3/8 - 9/16	8	11.8
51015*	3/8	5/16	7/32	3	4.5
51017	3/8	5/16	3/8	3.5	5.2
51019	3/8	5/16	3/8	3	4.5
51025*	3/8	5/16	7/32	4	6.2
51026	3/8	5/16	7/32 - 9/16	8	11.8
51407	3/8	1/2	7/32	3	5

*Neoprene

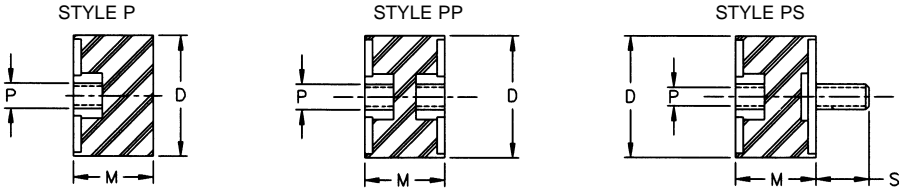


Part No.	D (Square)	E (Dia.)	M	N	8-32 x S	Max. Shear (lbs.)	Max. Comp. (lbs.)
51021	1/2"	3/8"	9/16"	3/8"	9/16"	2.8	6.8
51022	1/2	3/8	9/16	3/8	9/16	3.3	8.5
51023*	1/2	3/8	9/16	3/8	9/16	5.3	12
51024*	1/2	3/8	9/16	3/8	9/16	7.5	14.5

*Neoprene

Stud/Plate Mounts

Thread Size — 8



Part No.	Style	D	M	8 - 32 x S	P	Max. Shear (lbs.)	Max. Comp. (lbs.)
51060	P	9/16"	1/2"	—	8 - 32	—	9.5
51062	P	9/16"	1/2"	—	8 - 32	—	18
51110	P	7/16"	1/2"	—	8 - 32	—	4.5
51112	P	7/16"	1/2"	—	8 - 32	—	8

P Thread Depth Is Min. One Thread Dia.

Part No.	Style	D	M	8 - 32 x S	P	Max. Shear (lbs.)	Max. Comp. (lbs.)
51050	PP	9/16"	1/2"	—	8 - 32	4.5	9.5
51052	PP	9/16"	1/2"	—	8 - 32	6	18
51100	PP	7/16"	1/2"	—	8 - 32	3.3	4.5
51102	PP	7/16"	1/2"	—	8 - 32	4.8	8

P Thread Depth Is Min. One Thread Dia.

Part No.	Style	D	M	8 - 32 x S	P	Max. Shear (lbs.)	Max. Comp. (lbs.)
51040	PS	9/16"	1/2"	1/4"	8 - 32	4.5	9.5
51041	PS	9/16"	1/2"	1/4"	8 - 32	5.4	14
51042	PS	9/16"	1/2"	3/8"	8 - 32	6	18
51044	PS	9/16"	1/2"	3/8"	8 - 32	4.5	9.5
51056*	PS	9/16"	1/2"	3/8"	8 - 32	6	18
51058	PS	9/16"	1/2"	3/8"	8 - 32‡	4.5	9.5
51067*	PS	9/16"	1/2"	3/8"	8 - 32	4.5	9.5
51090	PS	7/16"	1/2"	3/8"	8 - 32	3.3	4.5
51092	PS	7/16"	1/2"	3/8"	8 - 32	4.8	8

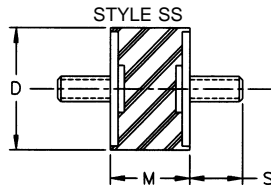
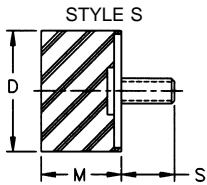
*Neoprene

‡Blind Hole

P Thread Depth Is Min. One Thread Dia.

Stud/Plate Mounts

Thread Size — 8



Part No.	Style	D	M	8 - 32 x S	P	Max. Shear (lbs.)	Max. Comp. (lbs.)
51070	S	9/16"	1/2"	3/8"	—	—	9.5
51072	S	9/16"	1/2"	3/8"	—	—	18
51120	S	7/16"	1/2"	3/8"	—	—	4.5
51122	S	7/16"	1/2"	3/8"	—	—	8

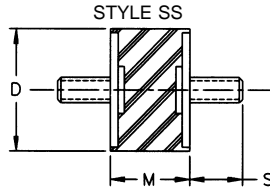
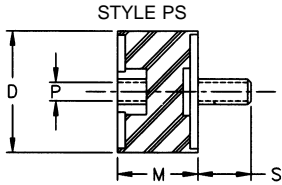
Part No.	Style	D	M	8 - 32 x S	P	Max. Shear (lbs.)	Max. Comp. (lbs.)
50912	SS	3/8"	1/2"	3/8"	—	1.5	10
50913	SS	3/8"	1/2"	3/8"	—	3	17
50914	SS	3/8"	1/2"	3/8"	—	2	13
50915	SS	3/8"	1/2"	3/8"	—	1	7
50916*	SS	3/8"	1/2"	3/8"	—	.5	4
50917*	SS	3/8"	1/2"	3/8"	—	1	7
50918*	SS	3/8"	1/2"	3/8"	—	1.5	10
50919*	SS	3/8"	1/2"	3/8"	—	3	17
50920*	SS	3/8"	1/2"	3/8"	—	4.5	23
51031	SS	9/16"	1/2"	3/8"	—	4.5	9.5
51032	SS	9/16"	1/2"	3/8"	—	5.2	13
51033*	SS	9/16"	1/2"	3/8"	—	6	18
51034*	SS	9/16"	1/2"	3/8"	—	13	25
51036	SS	9/16"	1/2"	1/2"	—	4.5	9.5
51055*	SS	9/16"	1/2"	1/2"	—	13	25
51081	SS	7/16"	1/2"	3/8"	—	3.3	4.5
51082	SS	7/16"	1/2"	3/8"	—	3.9	6.4
51083*	SS	7/16"	1/2"	3/8"	—	4.8	8
51084*	SS	7/16"	1/2"	3/8"	—	3.3	4.5
51089**	SS	7/16"	1/2"	3/8"	—	6	13

*Neoprene

**Nitrile

Stud/Plate Mounts

Thread Size — 10



Part No.	Style	D	M	S'	S	P	Max. Shear (lbs.)	Max. Comp. (lbs.)
51045	PS	$\frac{9}{16}$ "	$\frac{1}{2}$ "	—	8 - 32 x $\frac{3}{8}$ "	10 - 32	4.5	9.5
51047	PS	$\frac{9}{16}$ "	$\frac{1}{2}$ "	—	10 - 32 x $\frac{3}{8}$ "	10 - 32	6	18
51059*	PS	$\frac{9}{16}$ "	$\frac{1}{2}$ "	—	10 - 32 x $\frac{3}{8}$ "	10 - 32	5	16
51064	PS	$\frac{9}{16}$ "	$\frac{1}{2}$ "	—	10 - 24 x $\frac{3}{8}$ "	8 - 32	4.5	9.5
51066	PS	$\frac{9}{16}$ "	$\frac{1}{2}$ "	—	10 - 32 x $\frac{3}{8}$ "	8 - 32	4.5	9.5
51068	PS	$\frac{9}{16}$ "	$\frac{1}{2}$ "	—	10 - 32 x $\frac{3}{8}$ "	8 - 32	6	18
51136	PS	1	$\frac{3}{4}$ "	—	10 - 32 x $\frac{3}{8}$ "	10 - 32	24	55

*Neoprene

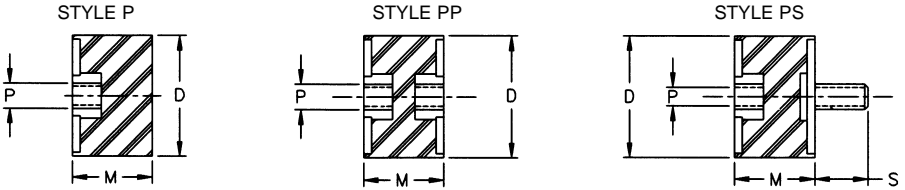
P Thread Depth Is Min. One Thread Dia.

Part No.	Style	D	M	S'	S	P	Max. Shear (lbs.)	Max. Comp. (lbs.)
51037*	SS	$\frac{9}{16}$ "	$\frac{1}{2}$ "	10 - 32 x $\frac{3}{8}$ "	10 - 32 x $\frac{3}{8}$ "	—	6	18
51048	SS	$\frac{9}{16}$ "	$\frac{1}{2}$ "	10 - 32 x $\frac{3}{16}$ "	10 - 32 x $\frac{3}{8}$ "	—	6	18
51057	SS	$\frac{9}{16}$ "	$\frac{1}{2}$ "	10 - 32 x $\frac{3}{8}$ "	10 - 32 x $\frac{3}{8}$ "	—	5	16
51135	SS	1	$\frac{3}{4}$ "	10 - 32 x $\frac{3}{8}$ "	10 - 32 x $\frac{3}{8}$ "	—	15	44

*Neoprene

Stud/Plate Mounts

Thread Size — 1/4



Part No.	Style	D	M	1/4 - 20 x S	P	Max. Shear (lbs.)	Max. Comp. (lbs.)
51205*	P	3/4"	1/2"	—	1/4 - 20	—	34
51181	P	1	3/4	—	1/4 - 20	—	45
50924*	P	1	3/4	—	1/4 - 20	—	65
50938*	P	1	17/32	—	1/4 - 20	—	70

*Neoprene
P Thread Depth Is Min. One Thread Dia.

Part No.	Style	D	M	1/4 - 20 x S	P	Max. Shear (lbs.)	Max. Comp. (lbs.)
51172	PP	1"	3/4"	—	1/4 - 20	20	55

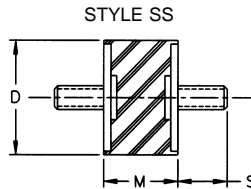
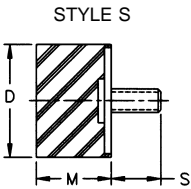
P Thread Depth Is Min. One Thread Dia.

Part No.	Style	D	M	1/4 - 20 x S	P	Max. Shear (lbs.)	Max. Comp. (lbs.)
51129*	PS	1"	17/32"	1/2"	1/4 - 20	32	45
51137	PS	1	1	1/2	1/4 - 20	10	30
51145*	PS	1	3/4	1/2	1/4 - 20	18	50
51151*	PS	1	3/4	3/8	1/4 - 20	24	55
51156*	PS	1	3/4	3/8	1/4 - 20	28	65
51161	PS	1	3/4	1/2	1/4 - 20	18	45
51162	PS	1	3/4	1/2	1/4 - 20	20	50
51163	PS	1	3/4	1/2	1/4 - 20	21	55
51166*	PS	1	3/4	1/2	1/4 - 20	35	75
51188*	PS	1	3/4	1/2	1/4 - 20	30	65
51582	PS	1	3/4	3/4	1/4 - 20	18	45
51198*	PS	1	1	1/2	1/4 - 20	20	50
51201*	PS	3/4	1/2	1/2	1/4 - 20	8	21
51202*	PS	3/4	1/2	1/2	1/4 - 20	12	28
51203*	PS	3/4	1/2	1/2	1/4 - 20	16	34
51204*	PS	3/4	1/2	1/2	1/4 - 20	20	40

*Neoprene
P Thread Depth Is Min. One Thread Dia.

Stud/Plate Mounts

Thread Size — 1/4



Part No.	Style	D	M	1/4 - 20 x S	Max. Shear (lbs.)	Max. Comp. (lbs.)
50889*	S	1"	1"	3/4"	—	70
51138	S	1	17/32	3/8	—	40
51139	S	1	17/32	3/8	—	70
51140	S	1	17/32	3/8	—	100
51176*	S	1 1/4	1	1/4	—	70
51185	S	1	3/4	1/2	—	44
51187	S	1	3/4	1/2	—	55
51191*	S	1	3/4	7/8	—	55
51195*	S	1	1	1/2	—	50
51196	S	1	1	3/8	—	70
51197	S	1	1	1/4	—	70
51581	S	1	41/64	1/2	—	35

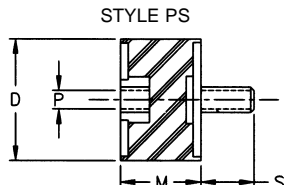
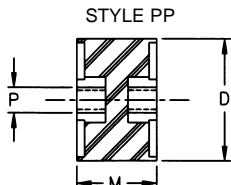
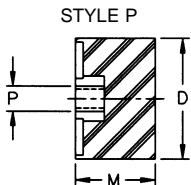
*Neoprene

Part No.	Style	D	M	1/4 - 20 x S	Max. Shear (lbs.)	Max. Comp. (lbs.)
51123*	SS	1"	17/32"	1/2"	30	45
51127	SS	1	17/32	3/8	30	45
51128	SS	1	17/32	3/8	34	70
51130	SS	1	17/32	1/2 - 1/4	32	45
51131	SS	1	17/32	1/2	15	44
51132	SS	1	17/32	1/2	30	45
51133	SS	1	17/32	1/2	34	70
51141	SS	1	3/4	1/2	15	44
51142	SS	1	3/4	1/2	18	50
51143	SS	1	3/4	1/2	21	55
51144*	SS	1	3/4	1/2	18	50
51146*	SS	1	3/4	1/2	21	55
51147	SS	1	3/4	5/8	18	50
51148*	SS	1	3/4	5/8	25	60
51150*	SS	1	3/4	3/4	15	44
51152	SS	1	3/4	3/4	21	55
51153*	SS	1	3/4	3/4	21	55
51154*	SS	1	3/4	3/8	21	55
51155*	SS	1	3/4	5/8 - 1/4	25	60
51157*	SS	1	3/4	3/4 - 1/2	25	60
51158	SS	1	3/4	3/4	18	50
51159	SS	1	3/4	1/2 - 1	30	70
51160*	SS	1	3/4	3/4	25	60
51164*	SS	1	1	1/2	12	35
51173*	SS	1	3/4	1/2	15	44
51184*	SS	1	3/4	1/2 - 3/4	15	44
51186*	SS	1	3/4	3/8	25	60
51289	SS	1	3/4	1/2 - 3/8	30	70
51290*	SS	1 1/8	1 1/2	5/8	10	20

*Neoprene

Stud/Plate Mounts

Thread Size — $\frac{5}{16}$



Part No.	Style	D	M	$\frac{5}{16}$ - 18 x S	P	Max. Shear (lbs.)	Max. Comp. (lbs.)
51254	P	1"	$\frac{3}{4}$ "	—	$\frac{5}{16}$ - 18	—	44
51335	P	$1\frac{1}{4}$ "	$\frac{3}{4}$ "	—	$\frac{5}{16}$ - 18	—	120

P Thread Depth Is Min. One Thread Dia.

Part No.	Style	D	M	$\frac{5}{16}$ - 18 x S	P	Max. Shear (lbs.)	Max. Comp. (lbs.)
50137*	PP	$1\frac{3}{8}$ "	1"	—	$\frac{5}{16}$ - 18	90	125
51272*	PP	1"	1"	—	$\frac{5}{16}$ - 18	10	25
51275*	PP	1"	1"	—	$\frac{5}{16}$ - 18	28	65
51318	PP	$1\frac{1}{4}$ "	$1\frac{1}{4}$ "	—	$\frac{5}{16}$ - 18	24	42
51323	PP	$1\frac{1}{4}$ "	$1\frac{1}{4}$ "	—	$\frac{5}{16}$ - 18	27	76
51324	PP	$1\frac{1}{4}$ "	$1\frac{1}{4}$ "	—	$\frac{5}{16}$ - 18	34	86

*Neoprene

P Thread Depth Is Min. One Thread Dia.

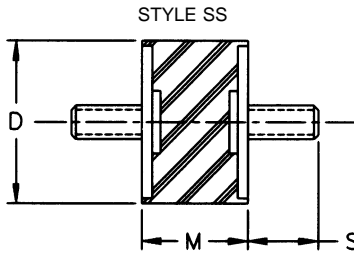
Part No.	Style	D	M	$\frac{5}{16}$ - 18 x S	P	Max. Shear (lbs.)	Max. Comp. (lbs.)
50928*	PS	$1\frac{3}{8}$ "	$1\frac{1}{2}$ "	$\frac{5}{8}$ "	$\frac{5}{16}$ - 18	55	100
51234	PS	1"	$\frac{3}{4}$ "	$\frac{1}{2}$ "	$\frac{5}{16}$ - 18	16	45
51258	PS	1"	$\frac{3}{4}$ "	$\frac{9}{16}$ "	$\frac{5}{16}$ - 18	40	80
51276*	PS	1"	$\frac{3}{4}$ "	$\frac{5}{16}$ "	$\frac{5}{16}$ - 18	16	45
51277*	PS	1"	$\frac{3}{4}$ "	$\frac{5}{16}$ "	$\frac{5}{16}$ - 18	19	52
51278*	PS	1"	$\frac{3}{4}$ "	$\frac{5}{16}$ "	$\frac{5}{16}$ - 18	25	62
51279*	PS	1"	$\frac{3}{4}$ "	$\frac{5}{16}$ "	$\frac{5}{16}$ - 18	31	70
51283*	PS	1"	$\frac{1}{2}$ "	$\frac{9}{16}$ "	$\frac{5}{16}$ - 18	16	40
51284*	PS	1"	$\frac{1}{2}$ "	$\frac{9}{16}$ "	$\frac{5}{16}$ - 18	22	45
51285*	PS	1"	$\frac{1}{2}$ "	$\frac{9}{16}$ "	$\frac{5}{16}$ - 18	35	70
51286*	PS	1"	$\frac{1}{2}$ "	$\frac{9}{16}$ "	$\frac{5}{16}$ - 18	40	78
51313*	PS	$1\frac{1}{4}$ "	1"	$\frac{3}{4}$ "	$\frac{5}{16}$ - 18	25	72
51314*	PS	$1\frac{1}{4}$ "	1"	$\frac{3}{4}$ "	$\frac{5}{16}$ - 18	38	92
51327*	PS	$1\frac{1}{4}$ "	$1\frac{1}{4}$ "	$\frac{9}{16}$ "	$\frac{5}{16}$ - 18	21	41
51328*	PS	$1\frac{1}{4}$ "	$1\frac{1}{4}$ "	$\frac{9}{16}$ "	$\frac{5}{16}$ - 18	31	64
51329*	PS	$1\frac{1}{4}$ "	$1\frac{1}{4}$ "	$\frac{9}{16}$ "	$\frac{5}{16}$ - 18	45	86
51330*	PS	$1\frac{1}{4}$ "	$1\frac{1}{4}$ "	$\frac{9}{16}$ "	$\frac{5}{16}$ - 18	63	120
51352	PS	$1\frac{3}{8}$ "	1"	$\frac{9}{16}$ "	$\frac{5}{16}$ - 18	66	96
51376	PS	$1\frac{1}{2}$ "	1"	$\frac{9}{16}$ "	$\frac{5}{16}$ - 18	30	95
51377	PS	$1\frac{1}{2}$ "	1"	$\frac{9}{16}$ "	$\frac{5}{16}$ - 18	40	135
51378	PS	$1\frac{1}{2}$ "	1"	$\frac{9}{16}$ "	$\frac{5}{16}$ - 18	50	185
51379	PS	$1\frac{1}{2}$ "	1"	$\frac{9}{16}$ "	$\frac{5}{16}$ - 18	65	210
51400*	PS	$1\frac{1}{2}$ "	1"	$\frac{5}{8}$ "	$\frac{5}{16}$ - 18	45	185
51542*	PS	$1\frac{1}{2}$ "	1"	$\frac{9}{16}$ "	$\frac{5}{16}$ - 18	40	135

*Neoprene

P Thread Depth Is Min. One Thread Dia.

Stud/Plate Mounts

Thread Size — $\frac{5}{16}$

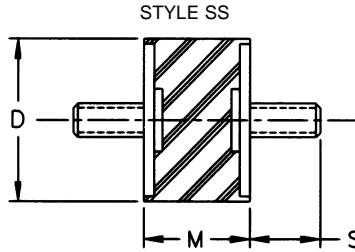


Part No.	Style	D	M	$\frac{5}{16}$ - 18 x S	Max. Shear (lbs.)	Max. Comp. (lbs.)
50136*	SS	1 $\frac{3}{8}$ "	1"	1 $\frac{1}{4}$ "	87	125
51239	SS	1	$\frac{3}{4}$	$\frac{3}{8}$	22	55
51240*	SS	1	$\frac{3}{4}$	$\frac{3}{8}$	22	58
51241	SS	1	$\frac{3}{4}$	$\frac{9}{16}$	15	44
51242	SS	1	$\frac{3}{4}$	$\frac{9}{16}$	18	50
51243	SS	1	$\frac{3}{4}$	$\frac{9}{16}$	22	58
51247	SS	1	$\frac{3}{4}$	$\frac{5}{8}$	15	44
51251	SS	1	$\frac{3}{4}$	$\frac{3}{4}$	15	44
51252	SS	1	$\frac{3}{4}$	$\frac{3}{4}$	18	50
51253	SS	1	$\frac{3}{4}$	$\frac{3}{4}$	22	58
51257*	SS	1	$\frac{3}{4}$	$\frac{9}{16}$	22	58
51260*	SS	1	$\frac{3}{4}$	$\frac{1}{2}$ - $\frac{7}{8}$	22	50
51262*	SS	1	1	$\frac{9}{16}$	12	35
51263	SS	1	1	$\frac{9}{16}$	16	42
51265	SS	1	1	$\frac{3}{4}$	35	70
51266	SS	1	1	$\frac{3}{4}$	8	25
51267	SS	1	1	$\frac{3}{4}$	12	35
51270	SS	1	1	$\frac{1}{2}$ - $\frac{3}{4}$	12	35
51280*	SS	1	$\frac{3}{4}$	$\frac{1}{2}$ - $\frac{7}{8}$	18	50
51282*	SS	1	$\frac{3}{4}$	$\frac{1}{2}$ - $\frac{7}{8}$	25	60
51296	SS	1	1 $\frac{1}{2}$	$\frac{5}{8}$	20	45
51296-1	SS	1	1 $\frac{1}{2}$	$\frac{5}{8}$	28	60
51297*	SS	1 $\frac{1}{4}$	1 $\frac{1}{4}$	$\frac{5}{8}$	27	76
51298*	SS	1 $\frac{1}{4}$	1 $\frac{1}{4}$	$\frac{5}{8}$	34	86
51299*	SS	1 $\frac{1}{4}$	1 $\frac{1}{4}$	$\frac{5}{8}$	60	120
51301	SS	1 $\frac{1}{4}$	$\frac{3}{4}$	$\frac{9}{16}$	36	87
51302	SS	1 $\frac{1}{4}$	$\frac{3}{4}$	$\frac{9}{16}$	43	98
51303	SS	1 $\frac{1}{4}$	$\frac{3}{4}$	$\frac{9}{16}$	52	120
51304	SS	1 $\frac{1}{4}$	$\frac{3}{4}$	$\frac{9}{16}$	45	93
51305*	SS	1 $\frac{1}{4}$	$\frac{3}{4}$	$\frac{1}{2}$ - $\frac{3}{4}$	45	93
51306	SS	1 $\frac{1}{4}$	$\frac{3}{4}$	$\frac{3}{4}$	36	87
51307	SS	1 $\frac{1}{4}$	$\frac{3}{4}$	$\frac{3}{4}$	43	98
51308	SS	1 $\frac{1}{4}$	$\frac{3}{4}$	$\frac{3}{4}$	52	120

*Neoprene

Stud/Plate Mounts

Thread Size — $\frac{5}{16}$

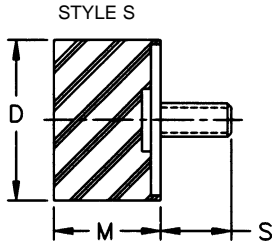


Part No.	Style	D	M	$\frac{5}{16}$ - 18 x S	Max. Shear (lbs.)	Max. Comp. (lbs.)
51310	SS	1 $\frac{1}{4}$ "	$\frac{3}{4}$ "	$\frac{5}{8}$ "	43	98
51311	SS	1 $\frac{1}{4}$	1	$\frac{9}{16}$	31	81
51312	SS	1 $\frac{1}{4}$	1	$\frac{9}{16}$	38	92
51315	SS	1 $\frac{1}{4}$	1	$\frac{3}{4}$	31	81
51316	SS	1 $\frac{1}{4}$	1	$\frac{3}{4}$	38	92
51320	SS	1 $\frac{1}{4}$	1 $\frac{1}{4}$	$\frac{9}{16}$	21	42
51321	SS	1 $\frac{1}{4}$	1 $\frac{1}{4}$	$\frac{9}{16}$	27	76
51322	SS	1 $\frac{1}{4}$	1 $\frac{1}{4}$	$\frac{9}{16}$	34	86
51325	SS	1 $\frac{1}{4}$	1 $\frac{1}{4}$	$\frac{3}{4}$	27	76
51326	SS	1 $\frac{1}{4}$	1 $\frac{1}{4}$	$\frac{3}{4}$	34	86
51337*	SS	1 $\frac{1}{4}$	1 $\frac{1}{4}$	$\frac{9}{16}$	60	120
51340	SS	1 $\frac{3}{8}$	1	$\frac{9}{16}$	27	47
51341	SS	1 $\frac{3}{8}$	1	$\frac{9}{16}$	41	74
51342	SS	1 $\frac{3}{8}$	1	$\frac{9}{16}$	66	96
51343	SS	1 $\frac{3}{8}$	1	$\frac{9}{16}$	76	105
51344*	SS	1 $\frac{1}{4}$	1 $\frac{1}{4}$	$\frac{7}{8}$	27	76
51345	SS	1 $\frac{1}{4}$	1 $\frac{1}{4}$	$\frac{7}{8}$	34	86
51348	SS	1 $\frac{3}{8}$	1	$\frac{7}{8}$ - 1	66	96
51349	SS	1 $\frac{1}{4}$	1 $\frac{1}{4}$	$\frac{3}{4}$	60	120
51353*	SS	1 $\frac{3}{8}$	1	$\frac{3}{4}$	27	47
51354*	SS	1 $\frac{3}{8}$	1	$\frac{3}{4}$	41	74
51355*	SS	1 $\frac{3}{8}$	1	$\frac{3}{4}$	66	96
51356*	SS	1 $\frac{3}{8}$	1	$\frac{3}{4}$	76	105
51357*	SS	1 $\frac{3}{8}$	1	$\frac{3}{4}$	87	125
51358	SS	1 $\frac{3}{8}$	1	$\frac{3}{4}$	76	105
51401*	SS	1 $\frac{1}{2}$	1	$\frac{5}{8}$	45	185
51460*	SS	2	1 $\frac{3}{4}$	$\frac{5}{8}$	50	150
51462*	SS	2	1 $\frac{3}{4}$	$\frac{5}{8}$	100	250
51464*	SS	2	1 $\frac{3}{4}$	$\frac{5}{8}$	150	325
51480*	SS	1 $\frac{3}{8}$	$\frac{5}{8}$	$\frac{5}{8}$	35	85
51481*	SS	1 $\frac{3}{8}$	$\frac{5}{8}$	$\frac{5}{8}$	45	120
51482*	SS	1 $\frac{3}{8}$	$\frac{5}{8}$	$\frac{5}{8}$	55	155
51483*	SS	1 $\frac{3}{8}$	$\frac{5}{8}$	$\frac{5}{8}$	65	185
51484*	SS	1 $\frac{3}{8}$	$\frac{5}{8}$	$\frac{5}{8}$	75	225

*Neoprene

Stud/Plate Mounts

Thread Size — $\frac{5}{16}$

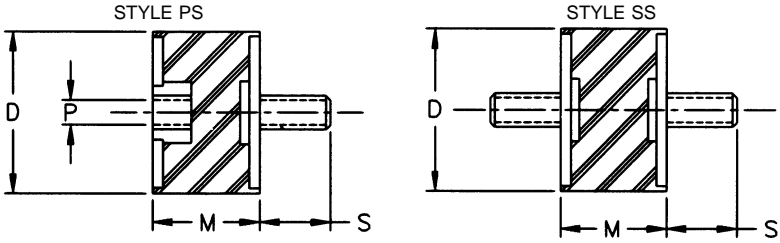


Part No.	Style	D	M	$\frac{5}{16}$ - 18 x S	Max. Comp. (lbs.)
51244	S	1"	$\frac{3}{4}$ "	$\frac{5}{8}$ "	58
51255	S	1	$\frac{17}{32}$	$\frac{9}{16}$	50
51256	S	1	$\frac{3}{4}$	$1\frac{1}{4}$	45
51319*	S	$1\frac{1}{4}$	1	$\frac{9}{16}$	120
51331	S	$1\frac{1}{4}$	$\frac{3}{4}$	$\frac{3}{4}$	100
51332	S	$1\frac{1}{4}$	$\frac{3}{4}$	$\frac{3}{4}$	120
51334*	S	$1\frac{1}{4}$	$\frac{3}{4}$	$\frac{9}{16}$	120
51336*	S	$1\frac{1}{4}$	$\frac{3}{4}$	$\frac{1}{2}$	120
51466	S	2	$1\frac{3}{4}$	$\frac{3}{4}$	150
51467	S	2	$1\frac{3}{4}$	$\frac{3}{4}$	200
51468	S	2	$1\frac{3}{4}$	$\frac{3}{4}$	250
51469	S	2	$1\frac{3}{4}$	$\frac{3}{4}$	290
51470	S	2	$1\frac{3}{4}$	$\frac{3}{4}$	325

*Neoprene

Stud/Plate Mounts

Thread Size — $\frac{3}{8}$



Part No.	Style	D	M	$\frac{3}{8}$ - 16 x S	P	Max. Shear (lbs.)	Max. Comp. (lbs.)
51380	PS	1½"	1"	$\frac{5}{8}$ "	$\frac{3}{8}$ - 16	30	95
51381	PS	1½"	1	$\frac{5}{8}$	$\frac{3}{8}$ - 16	40	135
51382	PS	1½"	1	$\frac{5}{8}$	$\frac{3}{8}$ - 16	50	185
51383	PS	1½"	1	$\frac{5}{8}$	$\frac{3}{8}$ - 16	65	210
51384	PS	1½"	1	$\frac{5}{8}$	$\frac{3}{8}$ - 16	80	270
51588*	PS	1½"	$\frac{7}{8}$	$\frac{5}{8}$	$\frac{3}{8}$ - 16	70	250
50868-1*	PS	2½"	1	$\frac{7}{8}$	$\frac{3}{8}$ - 16	85	200
50868-2*	PS	2½"	1	$\frac{7}{8}$	$\frac{3}{8}$ - 16	110	250
50868-3*	PS	2½"	1	$\frac{7}{8}$	$\frac{3}{8}$ - 16	150	325
50868-4*	PS	2½"	1	$\frac{7}{8}$	$\frac{3}{8}$ - 16	190	425
50868-5*	PS	2½"	1	$\frac{7}{8}$	$\frac{3}{8}$ - 16	220	500

*Neoprene

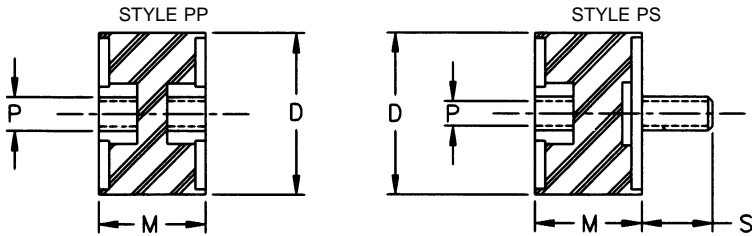
P Thread Depth Is Min. One Thread Dia.

Part No.	Style	D	M	$\frac{3}{8}$ - 16 x S	Max. Shear (lbs.)	Max. Comp. (lbs.)
51390	SS	1½"	1"	$\frac{5}{8}$ "	30	95
51391	SS	1½"	1	$\frac{5}{8}$	40	135
51392	SS	1½"	1	$\frac{5}{8}$	50	185
51393	SS	1½"	1	$\frac{5}{8}$	65	210
51394	SS	1½"	1	$\frac{5}{8}$	80	270
51395	SS	1½"	1	$\frac{3}{4}$	30	95
51396	SS	1½"	1	$\frac{3}{4}$	40	135
51397	SS	1½"	1	$\frac{3}{4}$	50	185
51398*	SS	1½"	1	$\frac{3}{4}$	65	210
51399*	SS	1½"	1	$\frac{3}{4}$	80	270
51620-1	SS	2½"	1	$\frac{7}{8}$	85	200
51620-2	SS	2½"	1	$\frac{7}{8}$	110	250
51620-3	SS	2½"	1	$\frac{7}{8}$	150	325
51620-4	SS	2½"	1	$\frac{7}{8}$	190	425
51620-5	SS	2½"	1	$\frac{7}{8}$	220	500

*Neoprene

Stud/Plate Mounts

Thread Size — 1/2



Part No.	Style	D	M	P (Depth)	Max. Shear (lbs.)	Max. Comp. (lbs.)
51415*	PP	2"	1 11/16"	1/2 - 13 (1/2)±	80	180
51416*	PP	2	1 11/16	1/2 - 13 (1/2)±	100	210
51417*	PP	2	1 11/16	1/2 - 13 (1/2)±	150	275
51418*	PP	2	1 11/16	1/2 - 13 (1/2)±	200	340
51419*	PP	2	1 11/16	1/2 - 13 (1/2)±	240	420
51553-1*	PP	3 3/8	1 1/2	1/2 - 13 (1/2)	60	450
51553-2*	PP	3 3/8	1 1/2	1/2 - 13 (1/2)	90	660
51553-3*	PP	3 3/8	1 1/2	1/2 - 13 (1/2)	130	950
51553-4*	PP	3 3/8	1 1/2	1/2 - 13 (1/2)	175	1260
51553-5*	PP	3 3/8	1 1/2	1/2 - 13 (1/2)	220	1550
51555-1*	PP	3 3/8	3	1/2 - 13 (1/2)	38	250
51555-2*	PP	3 3/8	3	1/2 - 13 (1/2)	65	410
51555-3*	PP	3 3/8	3	1/2 - 13 (1/2)	105	690
51555-4*	PP	3 3/8	3	1/2 - 13 (1/2)	140	910
51555-5*	PP	3 3/8	3	1/2 - 13 (1/2)	185	1190

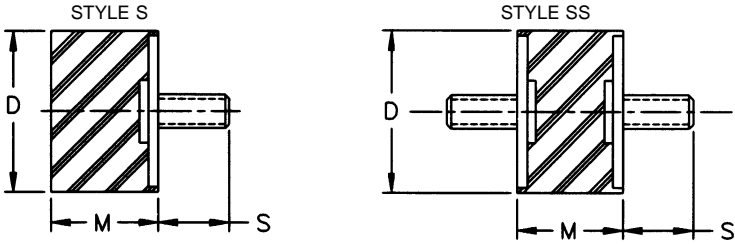
*Neoprene ‡Blind Hole P Thread Depth Is Min. One Thread Dia.

Part No.	Style	D	M	1/2 - 13 x S	P (Depth)	Max. Shear (lbs.)	Max. Comp. (lbs.)
51386*	PS	1 1/4"	1 1/4"	3/4"	1/2 - 13 (3/8)	38	80
51388*	PS	1 1/4	1 1/4	3/4	1/2 - 13 (3/8)	72	130
51420*	PS	2	1 11/16	1 1/8	1/2 - 13 (1/2)±	70	160
51421*	PS	2	1 11/16	1 1/8	1/2 - 13 (1/2)±	90	200
51422*	PS	2	1 11/16	1 1/8	1/2 - 13 (1/2)±	140	260
51423*	PS	2	1 11/16	1 1/8	1/2 - 13 (1/2)±	185	340
51424*	PS	2	1 11/16	1 1/8	1/2 - 13 (1/2)±	225	410
51551-1*	PS	3 3/8	1 1/2	1 5/8	1/2 - 13 (1/2)	80	360
51551-2*	PS	3 3/8	1 1/2	1 5/8	1/2 - 13 (1/2)	110	540
51551-3*	PS	3 3/8	1 1/2	1 5/8	1/2 - 13 (1/2)	145	760
51551-4*	PS	3 3/8	1 1/2	1 5/8	1/2 - 13 (1/2)	215	980
51551-5*	PS	3 3/8	1 1/2	1 5/8	1/2 - 13 (1/2)	285	1815
51557-1*	PS	3 3/8	3	1 5/8	1/2 - 13 (1/2)	38	250
51557-2*	PS	3 3/8	3	1 5/8	1/2 - 13 (1/2)	65	410
51557-3*	PS	3 3/8	3	1 5/8	1/2 - 13 (1/2)	105	690
51557-4*	PS	3 3/8	3	1 5/8	1/2 - 13 (1/2)	140	910
51557-5*	PS	3 3/8	3	1 5/8	1/2 - 13 (1/2)	185	1190

*Neoprene ‡Blind Hole P Thread Depth Is Min. One Thread Dia.

Stud/Plate Mounts

Thread Size — 1/2



Part No.	Style	D	M	1/2 - 13 x S	Max. Comp. (lbs.)
50121*	S	1 1/4"	3/4"	3/4"	90
50122*	S	1 1/4"	3/4"	3/4"	150

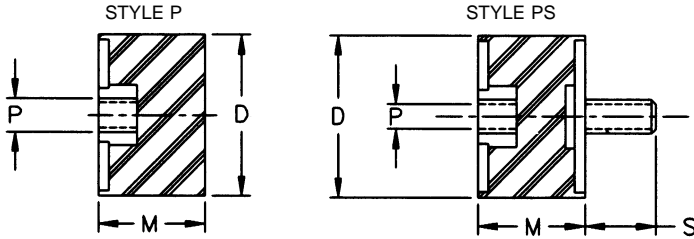
*Neoprene

Part No.	Style	D	M	1/2 - 13 x S	Max. Shear (lbs.)	Max. Comp. (lbs.)
51385	SS	1 1/4"	1 1/4"	3/4"	29	76
51387*	SS	1 1/4"	1 1/4"	3/4"	63	120
51410*	SS	2	1 11/16"	1 1/8"	60	160
51411*	SS	2	1 11/16"	1 1/8"	80	200
51412*	SS	2	1 11/16"	1 1/8"	125	260
51413*	SS	2	1 11/16"	1 1/8"	175	335
51414*	SS	2	1 11/16"	1 1/8"	210	400
51552-1*	SS	3 1/8"	1 1/2"	1 5/8"	90	360
51552-2*	SS	3 1/8"	1 1/2"	1 5/8"	120	540
51552-3*	SS	3 1/8"	1 1/2"	1 5/8"	155	760
51552-4*	SS	3 1/8"	1 1/2"	1 5/8"	225	980
51552-5*	SS	3 1/8"	1 1/2"	1 5/8"	295	1815
51556-1*	SS	3 1/8"	3	1 5/8"	38	250
51556-2*	SS	3 1/8"	3	1 5/8"	65	410
51556-3*	SS	3 1/8"	3	1 5/8"	105	690
51556-4*	SS	3 1/8"	3	1 5/8"	140	910
51556-5*	SS	3 1/8"	3	1 5/8"	185	1190

*Neoprene

Stud/Plate Mounts

Thread Size — Metric



Part No.	Style	D (mm)	M (mm)	S (mm)	P	Maximum Shear (lbs.)	Maximum Comp. (lbs.)
50955*	P	19	13	—	M6 x 1.0	—	35
51075	P	19	13	—	M5 x 0.8	—	35

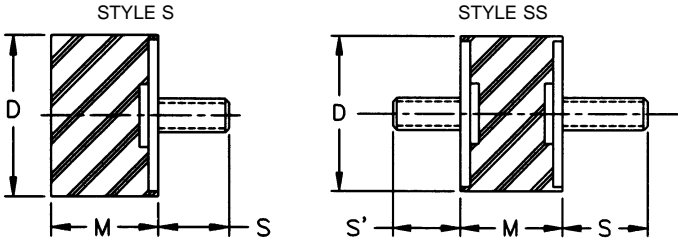
*Neoprene P Thread Depth Is Min. One Thread Dia.

Part No.	Style	D (mm)	M (mm)	S (mm)	P	Maximum Shear (lbs.)	Maximum Comp. (lbs.)
50197*	PS	9.5	8	M3 x 0.5 x 4	6 - 32	3	4.5
50198*	PS	9.5	9.5	M3 x 0.5 x 4	6 - 32	3	4.5
50926*	PS	25	25	M6 x 1.0 x 11.5	M6 x 1.0	12	35
50942*	PS	25	25	M6 x 1.0 x 19	M6 x 1.0	12	35
50947-1*	PS	32	32	M8 x 1.25 x 14	M8 x 1.25	35	70
50947-2*	PS	32	32	M8 x 1.25 x 14	M8 x 1.25	50	92
50947-3*	PS	32	32	M8 x 1.25 x 14	M8 x 1.25	65	125
50952*	PS	25	25	M6 x 1.0 x 11.5	M6 x 1.0	35	70
51095	PS	11	13	M4 x 0.7 x 6	M4 x 0.7	5	8
51095-1	PS	11	13	M4 x 0.7 x 4	M4 x 0.7	5	8
51259	PS	25	19	M8 x 1.25 x 14	M8 x 1.25	40	80
51447*	PS	25	19	M6 x 1.0 x 11	M6 x 1.0	22	58
51453*	PS	19	16	M4 x 0.7 x 10	M4 x 0.7	25	50
51425-1*	PS	51	43	M12 x 1.75 x 28	M12 x 1.75	70	160
51425-2*	PS	51	43	M12 x 1.75 x 28	M12 x 1.75	90	200
51425-3*	PS	51	43	M12 x 1.75 x 28	M12 x 1.75	140	260
51425-4*	PS	51	43	M12 x 1.75 x 28	M12 x 1.75	185	340
51425-5*	PS	51	43	M12 x 1.75 x 28	M12 x 1.75	225	410
51550-1*	PS	79	38	M12 x 1.75 x 41	M12 x 1.75	80	360
51550-2*	PS	79	38	M12 x 1.75 x 41	M12 x 1.75	110	540
51550-3*	PS	79	38	M12 x 1.75 x 41	M12 x 1.75	145	760
51550-4*	PS	79	38	M12 x 1.75 x 41	M12 x 1.75	215	980
51550-5*	PS	79	38	M12 x 1.75 x 41	M12 x 1.75	285	1815
51554-1*	PS	79	76	M12 x 1.75 x 41	M12 x 1.75	38	250
51554-2*	PS	79	76	M12 x 1.75 x 41	M12 x 1.75	65	410
51554-3*	PS	79	76	M12 x 1.75 x 41	M12 x 1.75	105	690
51554-4*	PS	79	76	M12 x 1.75 x 41	M12 x 1.75	140	910
51554-5*	PS	79	76	M12 x 1.75 x 41	M12 x 1.75	185	1190

*Neoprene P Thread Depth Is Min. One Thread Dia.

Stud/Plate Mounts

Thread Size — Metric



Part No.	Style	D (mm)	M (mm)	S' (mm)	S	Maximum Shear (lbs.)	Maximum Comp. (lbs.)
50941*	S	25	21.5	M6 x 1.0 x 19	—	—	55

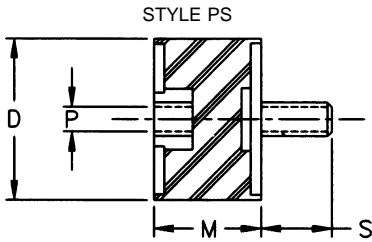
*Neoprene

Part No.	Style	D (mm)	M (mm)	S' (mm)	S (mm)	Maximum Shear (lbs.)	Maximum Comp. (lbs.)
50956*	SS	25	13	M6 x 1.0 x 19	M6 x 1.0 x 19	22	45
50957*	SS	11	10	M3 x 0.5 x 6	M3 x 0.5 x 6	3	5
50959-1*	SS	25	19	M6 x 1.0 x 12	M6 x 1.0 x 12	15	44
50959-2*	SS	25	19	M6 x 1.0 x 12	M6 x 1.0 x 12	18	50
50959-3*	SS	25	19	M6 x 1.0 x 12	M6 x 1.0 x 12	21	55
50959-4*	SS	25	19	M6 x 1.0 x 12	M6 x 1.0 x 12	25	60
50959-5*	SS	25	19	M6 x 1.0 x 12	M6 x 1.0 x 12	30	70
51098	SS	11	13	M4 x 0.7 x 6	M4 x 0.7 x 6	20	50
51281*	SS	25	19	M6 x 1.0 x 14	M6 x 1.0 x 14	20	54
51445*	SS	25	19	M8 x 1.25 x 14	M8 x 1.25 x 14	40	80
50988*	SS	32	32	M8 x 1.25 x 25	M8 x 1.25 x 25	27	76
51487**	SS	19	13	M6 x 1.0 x 14	M6 x 1.0 x 14	12	28
50900*	SS	64	25	M10 x 1.25 x 23	M10 x 1.25 x 23	110	250
51549-1*	SS	79	38	M12 x 1.75 x 41	M12 x 1.75 x 41	90	360
51549-2*	SS	79	38	M12 x 1.75 x 41	M12 x 1.75 x 41	120	540
51549-3*	SS	79	38	M12 x 1.75 x 41	M12 x 1.75 x 41	155	760
51549-4*	SS	79	38	M12 x 1.75 x 41	M12 x 1.75 x 41	225	980
51549-5*	SS	79	38	M12 x 1.75 x 41	M12 x 1.75 x 41	295	1815
51561-1*	SS	79	76	M12 x 1.75 x 41	M12 x 1.75 x 41	38	250
51561-2*	SS	79	76	M12 x 1.75 x 41	M12 x 1.75 x 41	65	410
51561-3*	SS	79	76	M12 x 1.75 x 41	M12 x 1.75 x 41	105	690
51561-4*	SS	79	76	M12 x 1.75 x 41	M12 x 1.75 x 41	140	910
51561-5*	SS	79	76	M12 x 1.75 x 41	M12 x 1.75 x 41	185	1190

*Neoprene

**Nitrile

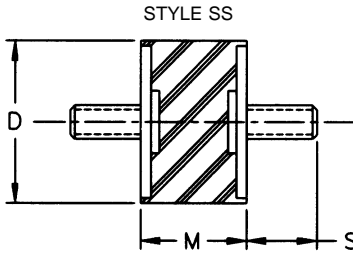
Silicone Stud/Plate Mounts



Part No.	Style	D	M	S	P	Max. Shear	Max. Comp.
50860-1	PS	1"	3/4"	M6 x 1.0 x 12mm	M6 x 1.0	8	25
50860-2	PS	1"	3/4"	M6 x 1.0 x 12mm	M6 x 1.0	12	35
50860-3	PS	1"	3/4"	M6 x 1.0 x 12mm	M6 x 1.0	16	50
50860-4	PS	1"	3/4"	M6 x 1.0 x 12mm	M6 x 1.0	22	65
50860-5	PS	1"	3/4"	M6 x 1.0 x 12mm	M6 x 1.0	30	90
50861-1	PS	1"	3/4"	1/4-20 x 1/2"	1/4-20	8	25
50861-2	PS	1"	3/4"	1/4-20 x 1/2"	1/4-20	12	35
50861-3	PS	1"	3/4"	1/4-20 x 1/2"	1/4-20	16	50
50861-4	PS	1"	3/4"	1/4-20 x 1/2"	1/4-20	22	65
50861-5	PS	1"	3/4"	1/4-20 x 1/2"	1/4-20	30	90
50862-1	PS	1 1/4"	3/4"	5/16-18 x 5/8"	5/16-18	12	50
50862-2	PS	1 1/4"	3/4"	5/16-18 x 5/8"	5/16-18	22	75
50862-3	PS	1 1/4"	3/4"	5/16-18 x 5/8"	5/16-18	30	100
50862-4	PS	1 1/4"	3/4"	5/16-18 x 5/8"	5/16-18	40	150
50862-5	PS	1 1/4"	3/4"	5/16-18 x 5/8"	5/16-18	55	180
50863-1	PS	1 1/2"	1"	5/16-18 x 5/8"	5/16-18	15	60
50863-2	PS	1 1/2"	1"	5/16-18 x 5/8"	5/16-18	20	90
50863-3	PS	1 1/2"	1"	5/16-18 x 5/8"	5/16-18	30	125
50863-4	PS	1 1/2"	1"	5/16-18 x 5/8"	5/16-18	45	175
50863-5	PS	1 1/2"	1"	5/16-18 x 5/8"	5/16-18	55	225

Note: operating temperature range for Silicone mounts is -80° F to 300° F

Silicone Stud/Plate Mounts

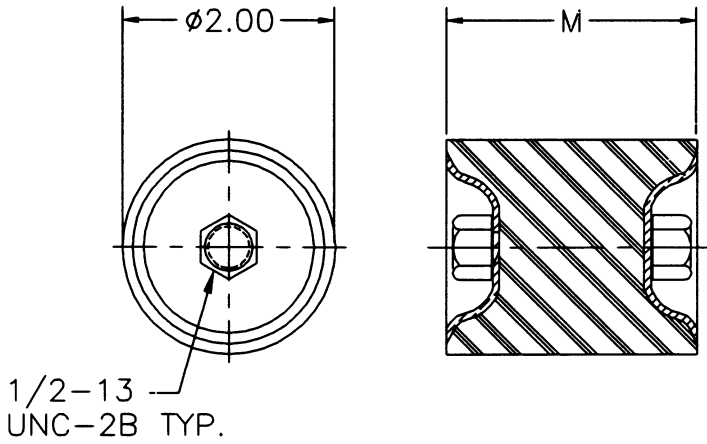


Part No.	Style	D	M	S	Max. Shear	Max. Comp.
50869-1	SS	1"	1/2"	1/4-20 x 1/2"	8	40
50869-2	SS	1"	1/2"	1/4-20 x 1/2"	12	60
50869-3	SS	1"	1/2"	1/4-20 x 1/2"	16	80
50869-4	SS	1"	1/2"	1/4-20 x 1/2"	20	100
50869-5	SS	1"	1/2"	1/4-20 x 1/2"	28	140
50870-1	SS	1"	3/4"	1/4-20 x 1/2"	8	25
50870-2	SS	1"	3/4"	1/4-20 x 1/2"	12	35
50870-3	SS	1"	3/4"	1/4-20 x 1/2"	16	50
50870-4	SS	1"	3/4"	1/4-20 x 1/2"	22	65
50870-5	SS	1"	3/4"	1/4-20 x 1/2"	30	90
50871-1	SS	1 1/4"	3/4"	5/16-18 x 5/8"	12	50
50871-2	SS	1 1/4"	3/4"	5/16-18 x 5/8"	22	75
50871-3	SS	1 1/4"	3/4"	5/16-18 x 5/8"	30	100
50871-4	SS	1 1/4"	3/4"	5/16-18 x 5/8"	40	150
50871-5	SS	1 1/4"	3/4"	5/16-18 x 5/8"	55	180
50872-1	SS	1 1/2"	1"	5/16-18 x 5/8"	15	60
50872-2	SS	1 1/2"	1"	5/16-18 x 5/8"	20	90
50872-3	SS	1 1/2"	1"	5/16-18 x 5/8"	30	125
50872-4	SS	1 1/2"	1"	5/16-18 x 5/8"	45	175
50872-5	SS	1 1/2"	1"	5/16-18 x 5/8"	55	225
50873-1	SS	1"	3/4"	M6 x 1.0 x 12mm	8	25
50873-2	SS	1"	3/4"	M6 x 1.0 x 12mm	12	35
50873-3	SS	1"	3/4"	M6 x 1.0 x 12mm	16	50
50873-4	SS	1"	3/4"	M6 x 1.0 x 12mm	22	65
50873-5	SS	1"	3/4"	M6 x 1.0 x 12mm	30	90

Note: Operating temperature range for silicone mounts is -80° F to 300° F

Dish End Plate/Plate Mounts

Thread Size — 1/2

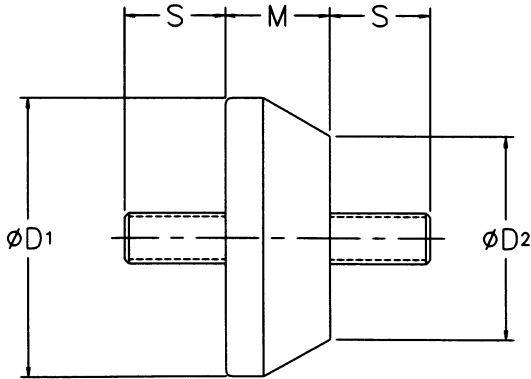


Part Number	M (in.)	Max. Shear Load (lbs.)	K _s (lbs./in.)	Max. Comp. Load (lbs.)	K _c (lbs./in.)
51496-1	1 3/4	45	210	95	1200
51496-2	1 3/4	55	280	130	1625
51496-3	1 3/4	85	420	190	2375
51496-4	1 3/4	130	650	290	3625
51497-1	2 1/8	30	150	90	735
51497-2	2 1/8	45	220	115	960
51497-3	2 1/8	60	290	165	1375
51497-4	2 1/8	100	485	265	2200
51498-1	2 5/8	20	100	85	520
51498-2	2 5/8	27	135	110	675
51498-3	2 5/8	37	180	170	1050
51498-4	2 5/8	65	315	260	1625

Material = Neoprene

Stud/Plate Mounts

Thread Size — 1/2



1/2 - 13

Part No.	D ₁	D ₂	M	S	Max. Shear (lbs.)	Max. Comp. (lbs.)
50144*	2 3/4"	2"	1 1/32"	1 1/4"	140	260
50145*				1 1/4"	165	340
50146*				1 1/4"	190	430
50151				1	140	260
50152				1	165	340
50153				1	190	430

* Neoprene

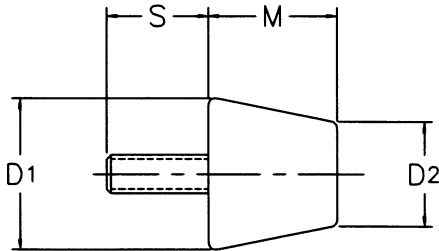
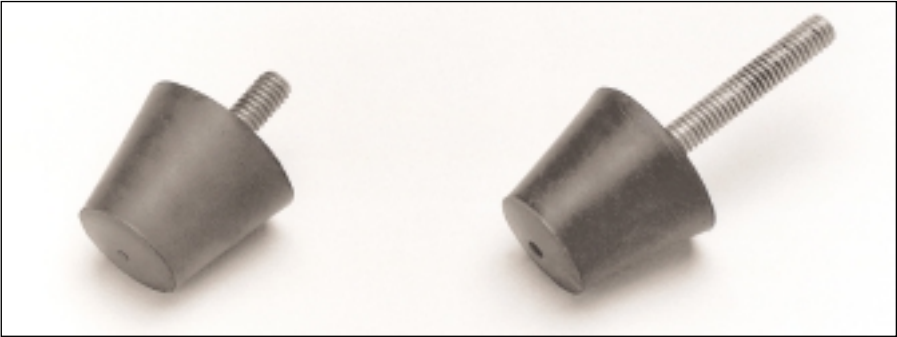
1/2 - 20

Part No.	D ₁	D ₂	M	S	Max. Shear (lbs.)	Max. Comp. (lbs.)
50148	2 3/4"	2"	1 1/32"	29/32"	140	260
50149				29/32"	165	340
50150				29/32"	190	430
51293**				29/32"	—	340

**No Stud On 2" Dia. End

Stud/Plate Mounts

Thread Size — $\frac{5}{16}$



$\frac{5}{16}$ - 18

Part Number	D ₁	D ₂	M	S	Static Load (lbs.)	Occasional Dynamic Load (lbs.)
51360*	1½"	1"	1¼"	9/16"	44	90
51361				9/16	49	100
51362				9/16	56	125
51363*				9/16	62	150
51364*				¾	45	95
51365*				¾	62	150
51366*				1⅛	56	125
51367*				1⅛	44	90

* Neoprene