

Stud/Plate Mounts



Tech Products offers one of the industry's largest selections of these multi-purpose mounts.

Stud/Plate mounts are known throughout the industry by several names including: bumpers, snubbers, feet, sandwich mounts, shockmounts, shearmounts, cylindrical mounts, isolators, levelers, and insulators.

Tech Products' offers other sizes of mounts which may not be shown. Please contact us if you cannot find a specific size needed or if you need assistance selecting the proper mount.

Features:

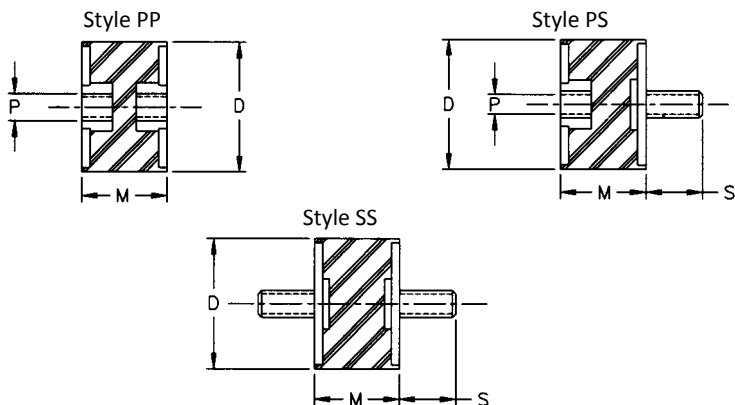
- Many sizes available from stock
- Standard and metric thread sizes available
- Elastomer options include natural rubber, neoprene, silicone and more
- Corrosion resistant zinc plated inserts
- Available in load ratings from 1 to 1200 lbs.

Visit www.novibes.com for a searchable database of Tech Products Stud/Plate Mounts.

Maximum Tightening Torque	
UNC Thread	lbs-inch
6-32	10
8-32	15
10-32	25
1/4-20	53
5/16-18	105
3/8-16	192
1/2-13	600

Note: Do not twist elastomer during installation

Stud/Plate Mounts (6-32)



Style PP

Part No.	D	M	P (Depth)	Max. Shear (lbs.)	Max. Comp. (lbs.)
50908	3/8	1/2	6-32 (1/8)	3.5	4
50903*	9/16	1/2	6-32 (1/8)	4.5	9.5
50905*	9/16	1/2	6-32 (1/8)	6	18
50907*	9/16	1/2	6-32 (1/8)	9	26

Standard elastomer is Natural Rubber, (*) indicates Neoprene

Style PS

Part No.	D	M	6-32 x S	P (Depth)	Max. Shear (lbs.)	Max. Comp. (lbs.)
50168*	3/8	3/8	1/4	6-32 (5/32)#	3.4	4.4
50169*	3/8	5/16	1/4	6-32 (5/32)	3	4
50172*	3/8	5/16	3/16	6-32 (5/32)	3	4
50177*	3/8	5/16	3/8	6-32 (5/32)	4	5
50181	7/16	13/32	1/4	6-32 (1/8)	2.5	3.8
50184*	7/16	13/32	1/4	6-32 (1/8)	3.4	4.4
50194*	7/16	13/32	1/4	6-32 (1/8)	6.5	14.5
50171*	7/16	1/2	3/8	6-32 (5/32)#	3.5	4.5
50170*	7/16	1/2	3/8	6-32 (5/32)#	4.4	6
50176*	7/16	1/2	1/4	6-32 (5/32)#	4.4	6
50986*	7/16	1/2	1/4	6-32 (1/8)#	3.5	4.5
65021*	7/16	5/8	1/4	6-32 (1/8)	3	4
50838*	7/16	3/4	1/4	6-32 (1/8)	2.5	3.5

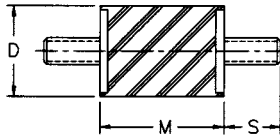
Standard elastomer is Natural Rubber, (*) indicates Neoprene

(#) indicates blind insert

Style SS

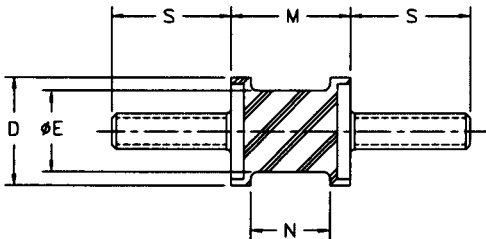
Part No.	D	M	6-32 x S	Max. Shear (lbs.)	Max. Comp. (lbs.)
50178	7/16	13/32	1/4	3	4
50179	7/16	13/32	1/4	3.2	5
50196	7/16	13/32	3/8 - 1/4	3	4

Stud/Plate Mounts (8-32)



Part No.	D (Square)	M	8-32 x S	Max. Shear (lbs.)	Max. Comp. (lbs.)
51007*	3/8	5/16	3/8	4	6.2
51010	3/8	5/16	7/32	9	13
51011	3/8	5/16	7/32	3	4.5
51013	3/8	5/16	7/32	4	6.2
51014*	3/8	5/16	3/8 - 9/16	8	11.8
51015*	3/8	5/16	7/32	3	4.5
51017	3/8	5/16	3/8	3.5	5.2
51019	3/8	5/16	3/8	3	4.5
51025*	3/8	5/16	7/32	4	6.2
51026	3/8	5/16	7/32 - 9/16	8	11.8
51407	3/8	1/2	7/32	3	5
51001	3/8	1/2	3/8	3	5
51002	3/8	1/2	3/8	3.6	6.2
51003	3/8	1/2	3/8	5.7	10
51004	3/8	1/2	3/8	7	13.5

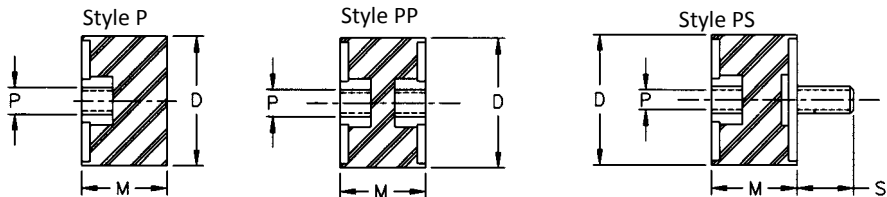
Standard elastomer is Natural Rubber, (*) indicates Neoprene



Part No.	D (Square)	E (Dia.)	M	N	8-32 x S	Max. Shear (lbs.)	Max. Comp. (lbs.)
51021	1/2	3/8	9/16	3/8	9/16	2.8	6.8
51022	1/2	3/8	9/16	3/8	9/16	3.3	8.5
51023*	1/2	3/8	9/16	3/8	9/16	5.3	12
51024*	1/2	3/8	9/16	3/8	9/16	7.5	14.5

Standard elastomer is Natural Rubber, (*) indicates Neoprene

Stud/Plate Mounts (8-32)



Style P

Part No.	D	M	P	Max. Shear (lbs.)	Max. Comp. (lbs.)
51110	7/16	1/2	8-32	-	4.5
51112	7/16	1/2	8-32	-	8
51060	9/16	1/2	8-32	-	9.5
51062	9/16	1/2	8-32	-	18

P thread depth is minimum one thread diameter

Style PP

Part No.	D	M	P	Max. Shear (lbs.)	Max. Comp. (lbs.)
51100	7/16	1/2	8-32	3.3	4.5
51102	7/16	1/2	8-32	4.8	8
51050	9/16	1/2	8-32	4.5	9.5
51051	9/16	1/2	8-32	5	14
51052	9/16	1/2	8-32	6	18
51053	9/16	1/2	8-32	7	22
65024*	9/16	1/2	8-32	8	25

P thread depth is minimum one thread diameter

Style PS

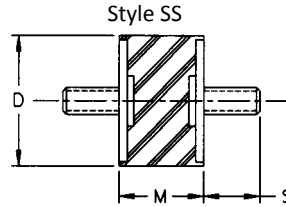
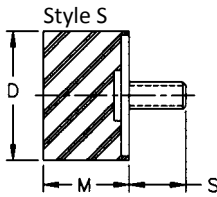
Part No.	D	M	8-32 x S	P	Max. Shear (lbs.)	Max. Comp. (lbs.)
51090	7/16	1/2	3/8	8-32	3.3	4.5
51092	7/16	1/2	3/8	8-32	4.8	8
51040	9/16	1/2	1/4	8-32	4.5	9.5
51041	9/16	1/2	1/4	8-32	5.4	14
51042	9/16	1/2	3/8	8-32	6	18
51044	9/16	1/2	3/8	8-32	4.5	9.5
51056*	9/16	1/2	3/8	8-32	6	18
51058	9/16	1/2	3/8	8-32#	4.5	9.5
51067	9/16	1/2	3/8	8-32	4.5	9.5

Standard elastomer is Natural Rubber, (*) indicates Neoprene

P thread depth is minimum one thread diameter

(#) indicates blind insert

Stud/Plate Mounts (8-32)



Style S

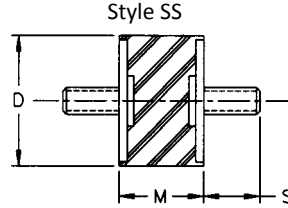
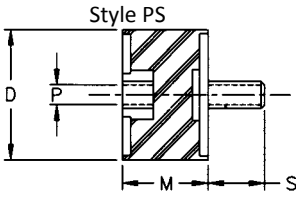
Part No.	D	M	8-32 x S	Max. Shear (lbs.)	Max. Comp. (lbs.)
51120	7/16	1/2	3/8	-	4.5
51122	7/16	1/2	3/8	-	8
51070	9/16	1/2	3/8	-	9.5
51072	9/16	1/2	3/8	-	18

Style SS

Part No.	D	M	8-32 x S	Max. Shear (lbs.)	Max. Comp. (lbs.)
50912	3/8	1/2	3/8	1.5	10
50913	3/8	1/2	3/8	3	17
50914	3/8	1/2	3/8	2	13
50915	3/8	1/2	3/8	1	7
50916*	3/8	1/2	3/8	0.5	4
50917*	3/8	1/2	3/8	1	7
50918*	3/8	1/2	3/8	1.5	10
50919*	3/8	1/2	3/8	3	17
50920*	3/8	1/2	3/8	4.5	23
51081	7/16	1/2	3/8	3.3	4.5
51082	7/16	1/2	3/8	3.9	6.4
51083*	7/16	1/2	3/8	4.8	8
51084*	7/16	1/2	3/8	3.3	4.5
51031	9/16	1/2	3/8	4.5	9.5
51032	9/16	1/2	3/8	5.2	13
51033*	9/16	1/2	3/8	6	18
51034*	9/16	1/2	3/8	13	25
51036	9/16	1/2	1/2	4.5	9.5
51055*	9/16	1/2	1/2	13	25

Standard elastomer is Natural Rubber, (*) indicates Neoprene

Stud/Plate Mounts (10-32)



Style PS

Part No.	D	M	S	P	Max. Shear (lbs.)	Max. Comp. (lbs.)
51045	9/16	1/2	8-32 x 3/8	10-32	4.5	9.5
51047	9/16	1/2	10-32 x 3/8	10-32	6	18
51059*	9/16	1/2	10-32 x 3/8	10-32	5	16
51066	9/16	1/2	10-32 x 3/8	8-32	4.5	9.5
51068	9/16	1/2	10-32 x 3/8	8-32	6	18
51136	1	3/4	10-32 x 3/8	10-32	24	55

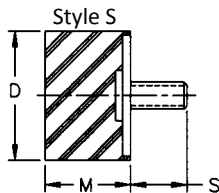
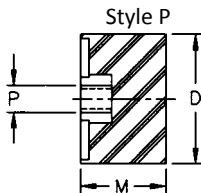
P thread depth is minimum one thread diameter

Style SS

Part No.	D	M	10-32 x S	Max. Shear (lbs.)	Max. Comp. (lbs.)
51037*	9/16	1/2	3/8	6	18
51048	9/16	1/2	3/8 - 3/16	6	18
51057	9/16	1/2	3/8	5	16
51135	1	3/4	3/8	15	44

Standard elastomer is Natural Rubber, (*) indicates Neoprene

Stud/Plate Mounts (1/4-20)



Style P

Part No.	D	M	P	Max. Shear (lbs.)	Max. Comp. (lbs.)
51205*	3/4	1/2	1/4-20	-	34
50938*	1	17/32	1/4-20	-	70
51181	1	3/4	1/4-20	-	45

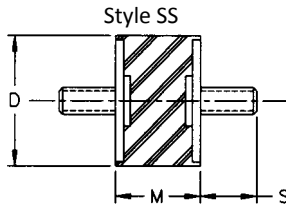
P thread depth is minimum one thread diameter

Style S

Part No.	D	M	1/4-20 x S	Max. Shear (lbs.)	Max. Comp. (lbs.)
51138	1	17/32	3/8	-	40
51139	1	17/32	3/8	-	70
51140	1	17/32	3/8	-	100
51581	1	41/64	1/2	-	35
51185	1	3/4	1/2	-	44
51187	1	3/4	1/2	-	55
51191*	1	3/4	7/8	-	55
50783*	1	27/32	3/4	-	50
51195*	1	1	1/2	-	50
51196	1	1	3/8	-	70
51197	1	1	1/4	-	70
50889*	1	1	3/4	-	70
50828*	1 1/4	3/4	5/8	-	120
51176*	1 1/4	1	1/4	-	70

Standard elastomer is Natural Rubber, (*) indicates Neoprene

Stud/Plate Mounts (1/4-20)



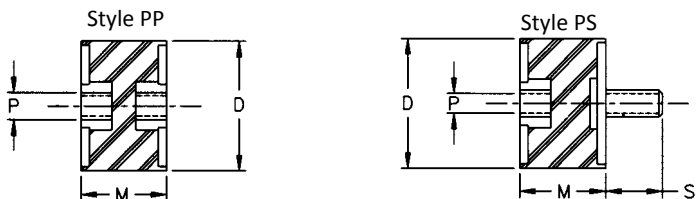
Style SS

Part No.	D	M	1/4-20 x S	Max. Shear (lbs.)	Max. Comp. (lbs.)
50820*	3/4	1/2	1/2	12	28
50859*	1	3/8	1/2	30	60
51123*	1	17/32	1/2	30	45
51127	1	17/32	3/8	30	45
51128	1	17/32	3/8	34	70
51130	1	17/32	1/2 - 1/4	32	45
51131	1	17/32	1/2	15	44
51132	1	17/32	1/2	30	45
51133	1	17/32	1/2	34	70
50965*	1	1/2	1/2	35	70
51154*	1	3/4	3/8	21	55
51186*	1	3/4	3/8	25	60
51141	1	3/4	1/2	15	44
51142	1	3/4	1/2	18	50
51143	1	3/4	1/2	21	55
51144*	1	3/4	1/2	18	50
51146*	1	3/4	1/2	21	55
50855*	1	3/4	1/2	25	60
51173*	1	3/4	1/2	15	44
51147	1	3/4	5/8	18	50
51148*	1	3/4	5/8	25	60
51150*	1	3/4	3/4	15	44
51152	1	3/4	3/4	21	55
51153*	1	3/4	3/4	21	55
51158	1	3/4	3/4	18	50
51160*	1	3/4	3/4	25	60
51155*	1	3/4	1/4 - 5/8	25	60
51289	1	3/4	3/8 - 1/2	30	70
51157*	1	3/4	1/2 - 3/4	25	60
50888*	1	3/4	1/2 - 3/4	21	55
51184*	1	3/4	1/2 - 3/4	15	44
51159	1	3/4	1/2 - 1	30	70
51164*	1	1	1/2	12	35
51290*	1 1/8	1 1/2	5/8	10	20
50773	1 1/4	1 1/4	5/8	30	80
50973^	1 1/2	1 1/2	1/2	30	80

Standard elastomer is Natural Rubber, (*) indicates Neoprene

Standard inserts are zinc plated, (^) indicates phosphate finish

Stud/Plate Mounts (1/4-20)



Style PP

Part No.	D	M	P	Max. Shear (lbs.)	Max. Comp. (lbs.)
50924	1	3/4	1/4-20	25	65
51172	1	3/4	1/4-20	20	55

P thread depth is minimum one thread diameter

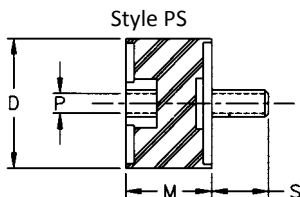
Style PS

Part No.	D	M	1/4-20 x S	P	Max. Shear (lbs.)	Max. Comp. (lbs.)
50823*	5/8	5/8	1/2	1/4-20	5	15
51201*	3/4	1/2	1/2	1/4-20	8	21
51202*	3/4	1/2	1/2	1/4-20	12	28
51203*	3/4	1/2	1/2	1/4-20	16	34
51204*	3/4	1/2	1/2	1/4-20	20	40
50839*	1	1/2	1/2	1/4-20	35	70
51129*	1	17/32	1/2	1/4-20	32	45
51145*	1	3/4	1/2	1/4-20	18	50
51151*	1	3/4	3/8	1/4-20	24	55
51156*	1	3/4	3/8	1/4-20	28	65
51161	1	3/4	1/2	1/4-20	18	45
51162	1	3/4	1/2	1/4-20	20	50
51163	1	3/4	1/2	1/4-20	21	55
51166*	1	3/4	1/2	1/4-20	35	75
51188*	1	3/4	1/2	1/4-20	30	65
51582	1	3/4	3/4	1/4-20	18	45
51137	1	1	1/2	1/4-20	10	30
51198*	1	1	1/2	1/4-20	20	50
50782*	1	1	3/4	1/4-20	15	40

Standard elastomer is Natural Rubber, (*) indicates Neoprene

P thread depth is minimum one thread diameter

Stud/Plate Mounts (5/16-18)



Style PS

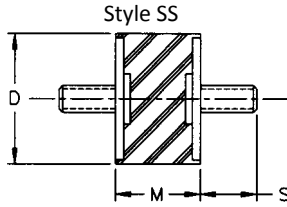
Part No.	D	M	5/16-18 x S	P	Max. Shear (lbs.)	Max. Comp. (lbs.)
51283*	1	1/2	9/16	5/16-18	16	40
51284*	1	1/2	9/16	5/16-18	22	45
51285*	1	1/2	9/16	5/16-18	35	70
51286*	1	1/2	9/16	5/16-18	40	78
50835*^	1	3/4	3/8	5/16-18	40	80
51234	1	3/4	1/2	5/16-18	16	45
51258	1	3/4	9/16	5/16-18	40	80
51276*	1	3/4	5/16	5/16-18	16	45
51277*	1	3/4	5/16	5/16-18	19	52
51278*	1	3/4	5/16	5/16-18	25	62
51279*	1	3/4	5/16	5/16-18	31	70
51313*	1 1/4	1	3/4	5/16-18	25	72
51314*	1 1/4	1	3/4	5/16-18	38	92
51327*	1 1/4	1 1/4	9/16	5/16-18	21	41
51328*	1 1/4	1 1/4	9/16	5/16-18	31	64
51329*	1 1/4	1 1/4	9/16	5/16-18	45	86
51330*	1 1/4	1 1/4	9/16	5/16-18	63	120
50780*	1 1/4	1 1/4	3/4	5/16-18	63	120
50817*	1 1/4	1 1/4	3/4	5/16-18	85	175
51352	1 3/8	1	9/16	5/16-18	66	96
65007*^	1 3/8	1	9/16	5/16-18	66	96
50928*	1 3/8	1 1/2	5/8	5/16-18	55	100
50975*	1 3/8	1 1/2	5/8	5/16-18	65	125
51376	1 1/2	1	9/16	5/16-18	30	95
51377	1 1/2	1	9/16	5/16-18	40	135
51378	1 1/2	1	9/16	5/16-18	50	185
51379	1 1/2	1	9/16	5/16-18	65	210
51400*	1 1/2	1	5/8	5/16-18	45	185
51542*	1 1/2	1	9/16	5/16-18	40	135

Standard elastomer is Natural Rubber, (*) indicates Neoprene

P thread depth is minimum one thread diameter

Standard inserts are zinc plated, (^) indicates phosphate finish

Stud/Plate Mounts (5/16-18)

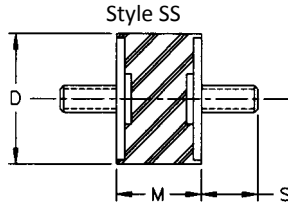


Style SS

Part No.	D	M	5/16-18 x S	Max. Shear (lbs.)	Max. Comp. (lbs.)
50852* [^]	1	1/2	5/8	45	90
51239	1	3/4	3/8	22	55
51240*	1	3/4	3/8	22	58
51241	1	3/4	9/16	15	44
51242	1	3/4	9/16	18	50
51243	1	3/4	9/16	22	58
51247	1	3/4	5/8	15	44
51251	1	3/4	3/4	15	44
51252	1	3/4	3/4	18	50
51253	1	3/4	3/4	22	58
51257*	1	3/4	9/16	22	58
51260*	1	3/4	1/2 - 7/8	22	50
51280*	1	3/4	1/2 - 7/8	18	50
51282*	1	3/4	1/2 - 7/8	25	60
51262*	1	1	9/16	12	35
51263	1	1	9/16	16	42
51265	1	1	3/4	35	70
51266	1	1	3/4	8	25
51267	1	1	3/4	12	35
51270	1	1	1/2 - 3/4	12	35
50825	1	1	1/2	30	70
51296	1	1 1/2	5/8	20	45
51296-1	1	1 1/2	5/8	28	60
50798*	1 1/4	3/4	9/16	25	60
51301	1 1/4	3/4	9/16	36	87
51302	1 1/4	3/4	9/16	43	98
51303	1 1/4	3/4	9/16	52	120
51304	1 1/4	3/4	9/16	45	93
51305*	1 1/4	3/4	1/2 - 3/4	45	93
51306	1 1/4	3/4	3/4	36	87
51307	1 1/4	3/4	3/4	43	98
51308	1 1/4	3/4	3/4	52	120
51310	1 1/4	3/4	5/8	43	98
51311	1 1/4	1	9/16	31	81
51312	1 1/4	1	9/16	38	92

Standard elastomer is Natural Rubber, (*) indicates Neoprene
 Standard inserts are zinc plated, (^) indicates phosphate finish

Stud/Plate Mounts (5/16-18)

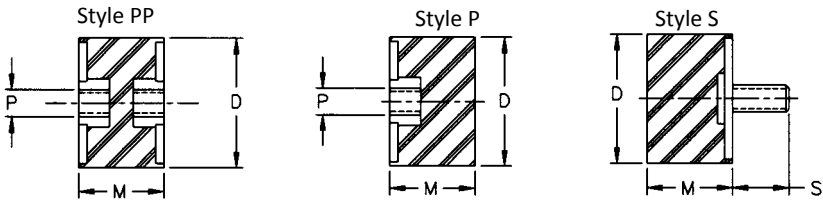


Style SS

Part No.	D	M	5/16-18 x S	Max. Shear (lbs.)	Max. Comp. (lbs.)
51315	1 ¼	1	3/4	31	81
51316	1 ¼	1	3/4	38	92
51297*	1 ¼	1 ¼	5/8	27	76
51298*	1 ¼	1 ¼	5/8	34	86
51299*	1 ¼	1 ¼	5/8	60	120
51320	1 ¼	1 ¼	9/16	21	42
51321	1 ¼	1 ¼	9/16	27	76
51322	1 ¼	1 ¼	9/16	34	86
51325	1 ¼	1 ¼	3/4	27	76
51326	1 ¼	1 ¼	3/4	34	86
51337*	1 ¼	1 ¼	9/16	60	120
51344*	1 ¼	1 ¼	7/8	27	47
51345	1 ¼	1 ¼	7/8	34	86
51349	1 ¼	1 ¼	3/4	60	120
51480*	1 ⅜	5/8	5/8	35	85
51481*	1 ⅜	5/8	5/8	45	120
51482*	1 ⅜	5/8	5/8	55	155
51483*	1 ⅜	5/8	5/8	65	185
51484*	1 ⅜	5/8	5/8	75	225
50136*	1 ⅜	1	1 1/4	87	125
51340	1 ⅜	1	9/16	27	47
51341	1 ⅜	1	9/16	41	74
51342	1 ⅜	1	9/16	66	96
51343	1 ⅜	1	9/16	76	105
51348	1 ⅜	1	7/8 - 1	66	96
51353*	1 ⅜	1	3/4	27	47
51354*	1 ⅜	1	3/4	41	74
51355*	1 ⅜	1	3/4	66	96
51356*	1 ⅜	1	3/4	76	105
51357*	1 ⅜	1	3/4	87	125
51358	1 ⅜	1	3/4	76	105
65028*^	1 ⅜	1	3/4	76	105
51401*	1 ½	1	5/8	45	185
51460*	2	1 ¼	5/8	50	150
51462*	2	1 ¼	5/8	100	250

Standard elastomer is Natural Rubber, (*) indicates Neoprene
 Standard inserts are zinc plated, (^) indicates phosphate finish

Stud/Plate Mounts (5/16-18)



Style PP

Part No.	D	M	P	Max. Shear (lbs.)	Max. Comp. (lbs.)
51272*	1	1	5/16-18	10	25
51275*	1	1	5/16-18	28	65
51318	1 ¼	1 ¼	5/16-18	24	42
51323	1 ¼	1 ¼	5/16-18	27	76
51324	1 ¼	1 ¼	5/16-18	34	86
50137*	1 ⅜	1	5/16-18	90	125

P thread depth is minimum one thread diameter

Style P

Part No.	D	M	P	Max. Shear (lbs.)	Max. Comp. (lbs.)
51254	1	3/4	5/16-18	-	44
51335	1 ¼	3/4	5/16-18	-	120

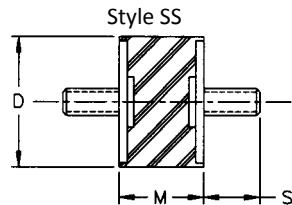
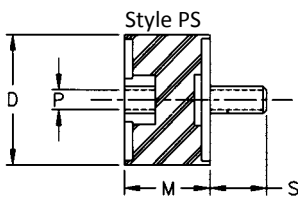
P thread depth is minimum one thread diameter

Style S

Part No.	D	M	5/16-18 x S	Max. Shear (lbs.)	Max. Comp. (lbs.)
50983^	1	3/8	1 1/4	-	50
51255	1	17/32	9/16	-	50
51244	1	3/4	5/8	-	58
50840^	1	3/4	1 1/4	-	58
50818	1	1	5/8	-	42
51331	1 ¼	3/4	3/4	-	100
51332	1 ¼	3/4	3/4	-	120
51334*	1 ¼	3/4	9/16	-	120
51336*	1 ¼	3/4	1/2	-	120
51319*	1 ¼	1	9/16	-	120
51466	2	1 ¾	3/4	-	150
51467	2	1 ¾	3/4	-	200
51468	2	1 ¾	3/4	-	250
51469	2	1 ¾	3/4	-	290
51470	2	1 ¾	3/4	-	325

Standard elastomer is Natural Rubber, (*) indicates Neoprene
Standard inserts are zinc plated, (^) indicates phosphate finish

Stud/Plate Mounts (3/8-16)



Style PS

Part No.	D	M	3/8-16 x S	P	Max. Shear (lbs.)	Max. Comp. (lbs.)
51588*	1 ½	7/8	5/8	3/8-16	70	250
51380	1 ½	1	5/8	3/8-16	30	95
51381	1 ½	1	5/8	3/8-16	40	135
51382	1 ½	1	5/8	3/8-16	50	185
51383	1 ½	1	5/8	3/8-16	65	210
51384	1 ½	1	5/8	3/8-16	80	270
50868-1*	2 ½	1	7/8	3/8-16	85	200
50868-2*	2 ½	1	7/8	3/8-16	110	250
50868-3*	2 ½	1	7/8	3/8-16	150	325
50868-4*	2 ½	1	7/8	3/8-16	190	425
50868-5*	2 ½	1	7/8	3/8-16	220	500

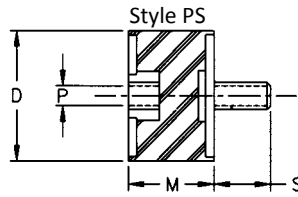
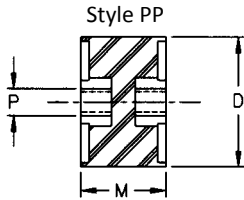
P thread depth is minimum one thread diameter

Style SS

Part No.	D	M	3/8-16 x S	Max. Shear (lbs.)	Max. Comp. (lbs.)
51390	1 ½	1	5/8	30	95
51391	1 ½	1	5/8	40	135
51392	1 ½	1	5/8	50	185
51393	1 ½	1	5/8	65	210
51394	1 ½	1	5/8	80	270
51395	1 ½	1	3/4	30	95
51396	1 ½	1	3/4	40	135
51397	1 ½	1	3/4	50	185
51398*	1 ½	1	3/4	65	210
51399*	1 ½	1	3/4	80	270
51620-1	2 ½	1	7/8	85	200
51620-2	2 ½	1	7/8	110	250
51620-3	2 ½	1	7/8	150	325
51620-4	2 ½	1	7/8	190	425
51620-5	2 ½	1	7/8	220	500

Standard elastomer is Natural Rubber, (*) indicates Neoprene

Stud/Plate Mounts (1/2-13)



Style PP

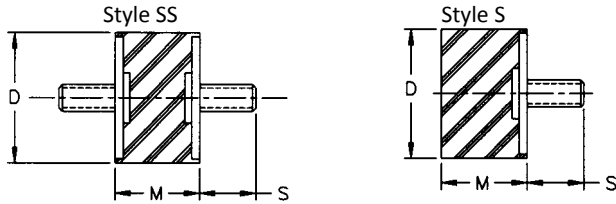
Part No.	D	M	P (Depth)	Max. Shear (lbs.)	Max. Comp. (lbs.)
51415*	2	1 ¹¹ / ₁₆	1/2-13 (1/2)#	80	180
51416*	2	1 ¹¹ / ₁₆	1/2-13 (1/2)#	100	210
51417*	2	1 ¹¹ / ₁₆	1/2-13 (1/2)#	150	275
51418*	2	1 ¹¹ / ₁₆	1/2-13 (1/2)#	200	340
51419*	2	1 ¹¹ / ₁₆	1/2-13 (1/2)#	240	420
51553-1*	3 ⁷ / ₈	1 ¹ / ₂	1/2-13 (1/2)	60	450
51553-2*	3 ⁷ / ₈	1 ¹ / ₂	1/2-13 (1/2)	90	660
51553-3*	3 ⁷ / ₈	1 ¹ / ₂	1/2-13 (1/2)	130	950
51553-4*	3 ⁷ / ₈	1 ¹ / ₂	1/2-13 (1/2)	175	1260
51553-5*	3 ⁷ / ₈	1 ¹ / ₂	1/2-13 (1/2)	220	1550
51555-1*	3 ⁷ / ₈	3	1/2-13 (1/2)	38	250
51555-2*	3 ⁷ / ₈	3	1/2-13 (1/2)	65	410
51555-3*	3 ⁷ / ₈	3	1/2-13 (1/2)	105	690
51555-4*	3 ⁷ / ₈	3	1/2-13 (1/2)	140	910
51555-5*	3 ⁷ / ₈	3	1/2-13 (1/2)	185	1190

Style PS

Part No.	D	M	1/2-13 x S	P	Max. Shear	Max. Comp.
51386*	1 ¹ / ₄	1 ¹ / ₄	3/4	1/2-13 (3/8)	38	80
51388*	1 ¹ / ₄	1 ¹ / ₄	3/4	1/2-13 (3/8)	72	130
51420*	2	1 ¹¹ / ₁₆	1 ¹ / ₈	1/2-13 (1/2)#	70	160
51421*	2	1 ¹¹ / ₁₆	1 ¹ / ₈	1/2-13 (1/2)#	90	200
51422*	2	1 ¹¹ / ₁₆	1 ¹ / ₈	1/2-13 (1/2)#	140	260
51423*	2	1 ¹¹ / ₁₆	1 ¹ / ₈	1/2-13 (1/2)#	185	340
51424*	2	1 ¹¹ / ₁₆	1 ¹ / ₈	1/2-13 (1/2)#	225	410
51551-1*	3 ⁷ / ₈	1 ¹ / ₂	1 ⁵ / ₈	1/2-13 (1/2)	80	360
51551-2*	3 ⁷ / ₈	1 ¹ / ₂	1 ⁵ / ₈	1/2-13 (1/2)	110	540
51551-3*	3 ⁷ / ₈	1 ¹ / ₂	1 ⁵ / ₈	1/2-13 (1/2)	145	760
51551-4*	3 ⁷ / ₈	1 ¹ / ₂	1 ⁵ / ₈	1/2-13 (1/2)	215	980
51551-5*	3 ⁷ / ₈	1 ¹ / ₂	1 ⁵ / ₈	1/2-13 (1/2)	285	1815
51557-1*	3 ⁷ / ₈	3	1 ⁵ / ₈	1/2-13 (1/2)	38	250
51557-2*	3 ⁷ / ₈	3	1 ⁵ / ₈	1/2-13 (1/2)	65	410
51557-3*	3 ⁷ / ₈	3	1 ⁵ / ₈	1/2-13 (1/2)	105	690
51557-4*	3 ⁷ / ₈	3	1 ⁵ / ₈	1/2-13 (1/2)	140	910
51557-5*	3 ⁷ / ₈	3	1 ⁵ / ₈	1/2-13 (1/2)	185	1190

Standard elastomer is Natural Rubber, (*) indicates Neoprene, (#) indicates blind insert

Stud/Plate Mounts (1/2-13)



Style SS

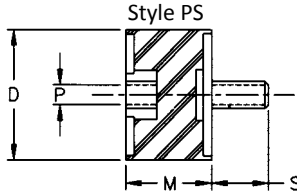
Part No.	D	M	1/2-13 x S	Max. Shear (lbs.)	Max. Comp. (lbs.)
51385	1 ¼	1 ¼	3/4	29	76
51387*	1 ¼	1 ¼	3/4	63	120
51410*	2	1 11/16	1 ½	60	160
51411*	2	1 11/16	1 ½	80	200
51412*	2	1 11/16	1 ½	125	260
51413*	2	1 11/16	1 ½	175	335
51414*	2	1 11/16	1 ½	210	400
51552-1*	3 ⅝	1 ½	1 ⅝	90	360
51552-2*	3 ⅝	1 ½	1 ⅝	120	540
51552-3*	3 ⅝	1 ½	1 ⅝	155	760
51552-4*	3 ⅝	1 ½	1 ⅝	225	980
51552-5*	3 ⅝	1 ½	1 ⅝	295	1815
51556-1*	3 ⅝	3	1 ⅝	38	250
51556-2*	3 ⅝	3	1 ⅝	65	410
51556-3*	3 ⅝	3	1 ⅝	105	690
51556-4*	3 ⅝	3	1 ⅝	140	910
51556-5*	3 ⅝	3	1 ⅝	185	1190

Style S

Part No.	D	M	1/2-13 x S	Max. Shear (lbs.)	Max. Comp. (lbs.)
50121*	1 ¼	3/4	3/4	-	90
50122*	1 ¼	3/4	3/4	-	150

Standard elastomer is Natural Rubber, (*) indicates Neoprene

Stud/Plate Mounts (Metric)



Style PS

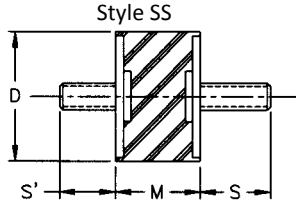
Part No.	D	M	S	P	Max. Shear (lbs.)	Max. Comp. (lbs.)
50197*	9.5	8	M3x0.5 x 4	6-32	3	4.5
50198*	9.5	9.5	M3x0.5 x 4	6-32	3	4.5
51095	11	13	M4x0.7 x 6	M4x0.7	5	8
51095-1	11	13	M4x0.7 x 4	M4x0.7	5	8
51453*	19	16	M4x0.7 x 10	M4x0.7	25	50
65026-2*	25	13	M6x1.0 x 13	M6x1.0	32	45
51447*	25	19	M6x1.0 x 13	M6x1.0	22	58
50805*	25	19	M6x1.0 x 13	M6x1.0	40	80
50926*	25	25	M6x1.0 x 11.5	M6x1.0	12	35
50842*	25	25	M6x1.0 x 19	M6x1.0	8	25
50942*	25	25	M6x1.0 x 19	M6x1.0	12	35
50952*	25	25	M6x1.0 x 11.5	M6x1.0	35	70
65011*	25	19	M8x1.25 x 16	M8x1.25	25	60
51259	25	19	M8x1.25 x 14	M8x1.25	40	80
50947-1*	32	32	M8x1.25 x 14	M8x1.25	35	70
50947-2*	32	32	M8x1.25 x 14	M8x1.25	50	92
50947-3*	32	32	M8x1.25 x 14	M8x1.25	65	125
50898*^	38	25	M8x1.25 x 14	M8x1.25	80	270
51425-1*	51	43	M12x1.75 x 28	M12x1.75	70	160
51425-2*	51	43	M12x1.75 x 28	M12x1.75	90	200
51425-3*	51	43	M12x1.75 x 28	M12x1.75	140	260
51425-4*	51	43	M12x1.75 x 28	M12x1.75	185	340
51425-5*	51	43	M12x1.75 x 28	M12x1.75	225	410
51550-1*	79	38	M12x1.75 x 41	M12x1.75	80	360
51550-2*	79	38	M12x1.75 x 41	M12x1.75	110	540
51550-3*	79	38	M12x1.75 x 41	M12x1.75	145	760
51550-4*	79	38	M12x1.75 x 41	M12x1.75	215	980
51550-5*	79	38	M12x1.75 x 41	M12x1.75	285	1815
51554-1*	79	76	M12x1.75 x 41	M12x1.75	38	250
51554-2*	79	76	M12x1.75 x 41	M12x1.75	65	410
51554-3*	79	76	M12x1.75 x 41	M12x1.75	105	690
51554-4*	79	76	M12x1.75 x 41	M12x1.75	140	910
51554-5*	79	76	M12x1.75 x 41	M12x1.75	185	1190

Standard elastomer is Natural Rubber, (*) indicates Neoprene

P thread depth is minimum one thread diameter

Standard inserts are zinc plated, (^) indicates phosphate finish

Stud/Plate Mounts (Metric)

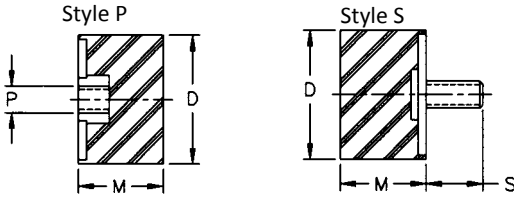


Style SS

Part No.	D	M	S	S'	Max. Shear (lbs.)	Max. Comp. (lbs.)
50957*	11	10	M3x0.5 x 6	M3x0.5 x 6	3	5
51098	11	13	M4x0.7 x 6	M4x0.7 x 6	5	8
51487**	19	13	M6x1.0 x 14	M6x1.0 x 14	12	28
50956*	25	13	M6x1.0 x 19	M6x1.0 x 19	22	45
50959-1*	25	19	M6x1.0 x 12	M6x1.0 x 12	15	44
50959-2*	25	19	M6x1.0 x 12	M6x1.0 x 12	18	50
50959-3*	25	19	M6x1.0 x 12	M6x1.0 x 12	21	55
50959-4*	25	19	M6x1.0 x 12	M6x1.0 x 12	25	60
50959-5*	25	19	M6x1.0 x 12	M6x1.0 x 12	30	70
50849*	25	19	M6x1.0 x 13	M6x1.0 x 13	15	44
50845-40*	25	19	M6x1.0 x 22	M6x1.0 x 14	18	50
50819*	25	19	M8x1.25 x 13	M8x1.25 x 13	21	55
51445*	25	19	M8x1.25 x 14	M8x1.25 x 14	40	80
51281*	25	19	M8x1.25 x 20	M8x1.25 x 20	20	54
65005*	25	19	M8x1.25 x 16	M8x1.25 x 10	25	60
50787*	25	19	M8x1.25 x 20	M8x1.25 x 10	40	80
50988*	32	32	M8x1.25 x 25	M8x1.25 x 25	27	76
50785*	35	25	M8x1.25 x 20	M8x1.25 x 20	41	74
50900*	64	25	M10x1.5 x 23	M10x1.5 x 23	110	250
51549-1*	79	38	M12x1.75 x 41	M12x1.75 x 41	90	360
51549-2*	79	38	M12x1.75 x 41	M12x1.75 x 41	120	540
51549-3*	79	38	M12x1.75 x 41	M12x1.75 x 41	155	760
51549-4*	79	38	M12x1.75 x 41	M12x1.75 x 41	225	980
51549-5*	79	38	M12x1.75 x 41	M12x1.75 x 41	295	1815
51561-1*	79	76	M12x1.75 x 41	M12x1.75 x 41	38	250
51561-2*	79	76	M12x1.75 x 41	M12x1.75 x 41	65	410
51561-3*	79	76	M12x1.75 x 41	M12x1.75 x 41	105	690
51561-4*	79	76	M12x1.75 x 41	M12x1.75 x 41	140	910
51561-5*	79	76	M12x1.75 x 41	M12x1.75 x 41	185	1190

Standard elastomer is Natural Rubber, (*) indicates Neoprene, (**) indicates Nitrile

Stud/Plate Mounts (Metric)



Style P

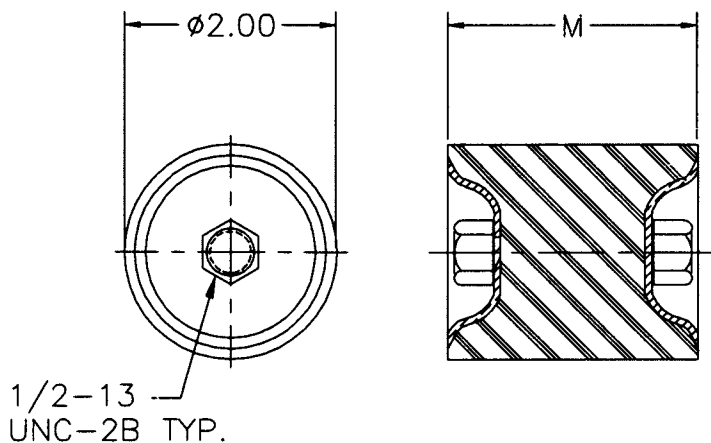
Part No.	D	M	P	Max. Shear (lbs.)	Max. Comp. (lbs.)
51075	19	13	M5 x 0.8	-	35
50955*	19	13	M6 x 1.0	-	35

Style S

Part No.	D	M	1/2-13 x S	Max. Shear (lbs.)	Max. Comp. (lbs.)
50833*	25	9.5	M6x1.0 x 13	-	35
50836*	25	9.5	M6x1.0 x 19	-	35
50841*	25	21.5	M6x1.0 x 19	-	40
50941*	25	21.5	M6x1.0 x 19	-	55
50834	38	25	M8x1.25 x 14	-	270

Standard elastomer is Natural Rubber, (*) indicates Neoprene

Dish End Plate/Plate Mounts

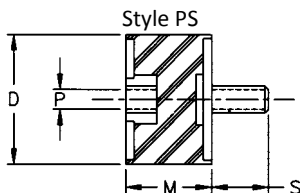


Part No.	M	Max. Shear (lbs.)	Shear Stiffness (lbs./in.)	Max. Comp. (lbs.)	Comp. Stiffness (lbs./in.)
51496-1	1 3/4	45	210	95	1200
51496-2	1 3/4	55	280	130	1625
51496-3	1 3/4	85	420	190	2375
51496-4	1 3/4	130	650	290	3625
51497-1	2 1/8	30	150	90	735
51497-2	2 1/8	45	220	115	960
51497-3	2 1/8	60	290	165	1375
51497-4	2 1/8	100	485	265	2200
51498-1	2 5/8	20	100	85	520
51498-2	2 5/8	27	135	110	675
51498-3	2 5/8	37	180	170	1050
51498-4	2 5/8	65	315	260	1625

Elastomer = Neoprene

Inserts = Low Carbon Steel (Optional Stainless Steel Available)

Silicone Stud/Plate Mounts

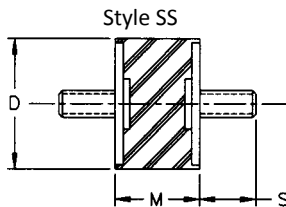


Style PS

Part No.	D	M	S	P	Max. Shear (lbs.)	Max. Comp. (lbs.)
50861-1	1	3/4	1/4-20 x 1/2	1/4-20	8	25
50861-2	1	3/4	1/4-20 x 1/2	1/4-20	12	35
50861-3	1	3/4	1/4-20 x 1/2	1/4-20	16	50
50861-4	1	3/4	1/4-20 x 1/2	1/4-20	22	65
50861-5	1	3/4	1/4-20 x 1/2	1/4-20	30	90
50862-1	1 1/4	3/4	5/16-18 x 5/8	5/16-18	12	50
50862-2	1 1/4	3/4	5/16-18 x 5/8	5/16-18	22	75
50862-3	1 1/4	3/4	5/16-18 x 5/8	5/16-18	30	100
50862-4	1 1/4	3/4	5/16-18 x 5/8	5/16-18	40	150
50862-5	1 1/4	3/4	5/16-18 x 5/8	5/16-18	55	180
50863-1	1 1/2	1	5/16-18 x 5/8	5/16-18	15	60
50863-2	1 1/2	1	5/16-18 x 5/8	5/16-18	20	90
50863-3	1 1/2	1	5/16-18 x 5/8	5/16-18	30	125
50863-4	1 1/2	1	5/16-18 x 5/8	5/16-18	45	175
50863-5	1 1/2	1	5/16-18 x 5/8	5/16-18	55	225
50860-1	1	3/4	M6x1.0 x 12mm	M6x1.0	8	25
50860-2	1	3/4	M6x1.0 x 12mm	M6x1.0	12	35
50860-3	1	3/4	M6x1.0 x 12mm	M6x1.0	16	50
50860-4	1	3/4	M6x1.0 x 12mm	M6x1.0	22	65
50860-5	1	3/4	M6x1.0 x 12mm	M6x1.0	30	90
65012-1	1 1/4	3/4	M8x1.25 x 16mm	M8x1.25	12	50
65012-2	1 1/4	3/4	M8x1.25 x 16mm	M8x1.25	22	75
65012-3	1 1/4	3/4	M8x1.25 x 16mm	M8x1.25	30	100
65012-4	1 1/4	3/4	M8x1.25 x 16mm	M8x1.25	40	150
65012-5	1 1/4	3/4	M8x1.25 x 16mm	M8x1.25	55	180
65013-1	1 1/2	1	M8x1.25 x 16mm	M8x1.25	15	60
65013-2	1 1/2	1	M8x1.25 x 16mm	M8x1.25	20	90
65013-3	1 1/2	1	M8x1.25 x 16mm	M8x1.25	30	125
65014-4	1 1/2	1	M8x1.25 x 16mm	M8x1.25	45	175
65014-5	1 1/2	1	M8x1.25 x 16mm	M8x1.25	55	225

Note: Operating temperature range for Silicone mounts is -80° to 300°F

Silicone Stud/Plate Mounts

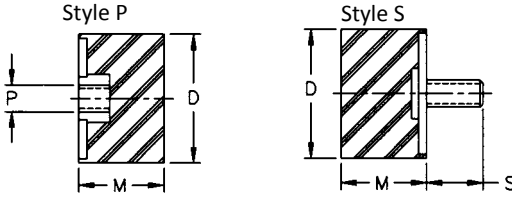


Style SS

Part No.	D	M	S	Max. Shear (lbs.)	Max. Comp. (lbs.)
50869-1	1	1/2	1/4-20 x 1/2	8	40
50869-2	1	1/2	1/4-20 x 1/2	12	60
50869-3	1	1/2	1/4-20 x 1/2	16	80
50869-4	1	1/2	1/4-20 x 1/2	20	100
50869-5	1	1/2	1/4-20 x 1/2	28	140
50870-1	1	3/4	1/4-20 x 1/2	8	25
50870-2	1	3/4	1/4-20 x 1/2	12	35
50870-3	1	3/4	1/4-20 x 1/2	16	50
50870-4	1	3/4	1/4-20 x 1/2	22	65
50870-5	1	3/4	1/4-20 x 1/2	30	90
50871-1	1 ¼	3/4	5/16-18 x 5/8	12	50
50871-2	1 ¼	3/4	5/16-18 x 5/8	22	75
50871-3	1 ¼	3/4	5/16-18 x 5/8	30	200
50871-4	1 ¼	3/4	5/16-18 x 5/8	40	150
50871-5	1 ¼	3/4	5/16-18 x 5/8	55	180
50872-1	1 ½	1	5/16-18 x 5/8	15	60
50872-2	1 ½	1	5/16-18 x 5/8	20	90
50872-3	1 ½	1	5/16-18 x 5/8	30	125
50872-4	1 ½	1	5/16-18 x 5/8	45	175
50872-5	1 ½	1	5/16-18 x 5/8	55	225
50873-1	1	3/4	M6x1.0 x 12mm	8	25
50873-2	1	3/4	M6x1.0 x 12mm	12	35
50873-3	1	3/4	M6x1.0 x 12mm	16	50
50873-4	1	3/4	M6x1.0 x 12mm	22	65
50873-5	1	3/4	M6x1.0 x 12mm	30	90
65016-1	1 ¼	3/4	M8x1.25 x 16mm	12	50
65016-2	1 ¼	3/4	M8x1.25 x 16mm	22	75
65016-3	1 ¼	3/4	M8x1.25 x 16mm	30	200
65016-4	1 ¼	3/4	M8x1.25 x 16mm	40	150
65016-5	1 ¼	3/4	M8x1.25 x 16mm	55	180
65017-1	1 ½	1	M8x1.25 x 16mm	15	60
65017-2	1 ½	1	M8x1.25 x 16mm	20	90
65017-3	1 ½	1	M8x1.25 x 16mm	30	125
65017-4	1 ½	1	M8x1.25 x 16mm	45	175
65017-5	1 ½	1	M8x1.25 x 16mm	55	225

Note: Operating temperature range for Silicone mounts is -80° to 300°F

Silicone Stud/Plate Mounts



Style P

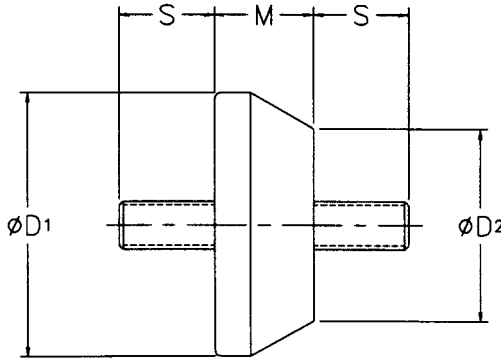
Part No.	D	M	P	Max. Shear (lbs.)	Max. Comp. (lbs.)
50790-1	1	3/4	1/4-20	-	25
50790-5	1	3/4	1/4-20	-	90
50792-1	1 ½	1	5/16-18	-	60
50792-5	1 ½	1	5/16-18	-	225

Style S

Part No.	D	M	S	Max. Shear (lbs.)	Max. Comp. (lbs.)
50789-1	1	3/4	1/4-20 x 1/2	-	25
50789-5	1	3/4	1/4-20 x 1/2	-	90
50791-1	1 ½	1	5/16-18 x 5/8	-	60
50791-5	1 ½	1	5/16-18 x 5/8	-	225

Note: Operating temperature range for Silicone mounts is -80° to 300°F

Conical Stud/Plate Mounts



1/2-13

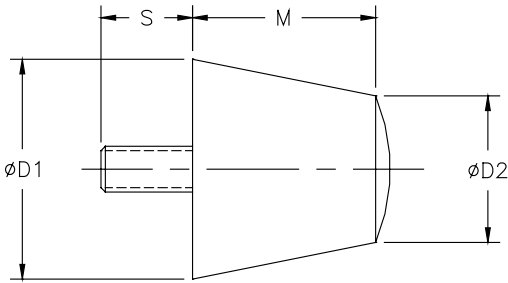
Part No.	D1	D2	M	S	Max. Shear (lbs.)	Max. Comp. (lbs.)
50144*	2 3/4	2	1 1/32	1 1/4	140	260
50145*				1 1/4	165	340
50146*				1 1/4	190	430
50151				1	140	260
50152				1	165	340
50153				1	190	430

Standard elastomer is Natural Rubber, (*) indicates Neoprene

1/2-20

Part No.	D1	D2	M	S	Max. Shear (lbs.)	Max. Comp. (lbs.)
50148	2 3/4	2	1 1/32	29/32	140	260
50149				29/32	165	340
50150				29/32	190	430

Conical Bumpers



Part No.	D1	D2	M	5/16-18 x S	Max. Shear (lbs.)	Max. Comp. (lbs.)
51360*	1 ½	1	1 ¼	9/16	44	90
51361				9/16	49	100
51362				9/16	56	125
51363*				9/16	62	150
51364*				¾	45	95
51365*				¾	62	150
51366*				1 ⅛	56	125
51367*				1 ⅛	44	90
50799-N				M8x1.25 x 16mm	44	90
50799-S ⁺				M8x1.25 x 16mm	44	90

Standard elastomer is Natural Rubber, (*) indicates Neoprene, (+) indicates Silicone