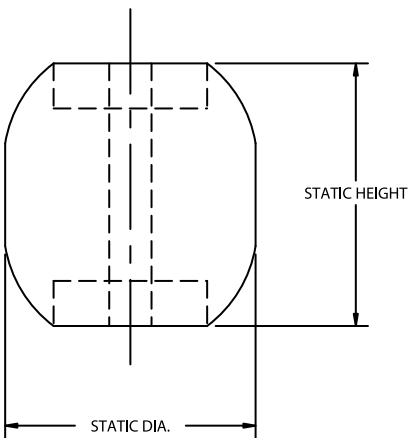


Isosphere Mounts

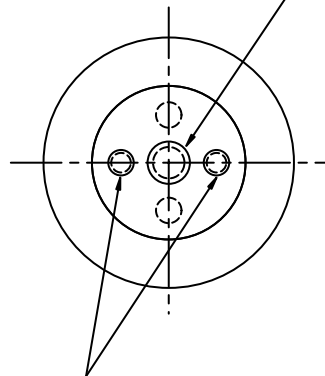


Isosphere mounts are designed to carry loads in compression. A near spherical shape is formed when the load is applied. The distinguishing non-linear stiffness characteristics make these mounts ideal for vibration isolation over a broad range of frequencies. Shock loads are isolated equally as well. Internal snubbing of a shock load occurs as deflection increases the stiffness of the mount. Applications include suspension systems spring elements, shock mounts, shaker screen springs, bumpers, and snubbers.

- Neoprene and zinc plated steel construction
- Non-Linear Stiffness characteristics
- Two sizes for loads ranging from 500 to 40,000 lbs.
- Excellent Shock attenuation

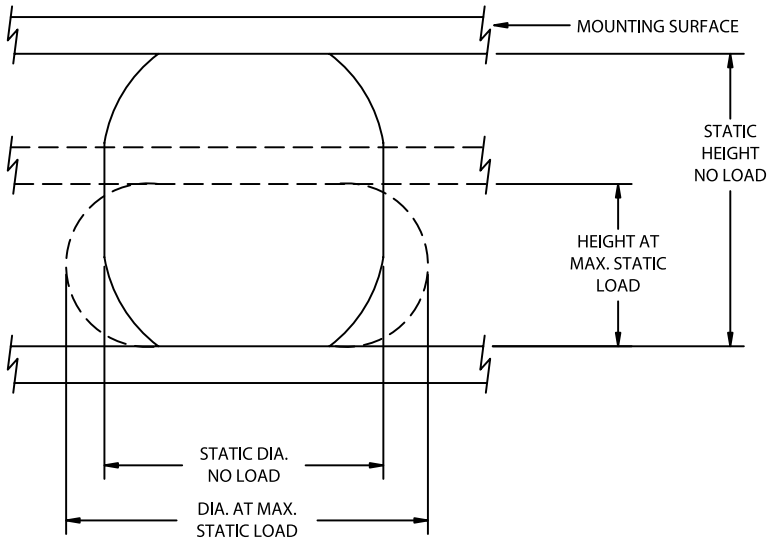


OPTION (1): ONE THREADED HOLE
TOP AND BOTTOM



OPTION (2): TWO THREADED HOLES
TOP AND BOTTOM; CENTER
THROUGH HOLE

Isosphere Mounts



TOP AND BOTTOM MOUNTING SURFACE MUST BE EQUAL OR GREATER THAN THE MOUNT DIAMETER WITH LOAD APPLIED

| Part No. | Color Code | Max. Static Load (lbs) | Max Dynamic Load (lbs) | Dynamic Spring Rate (lbs/in) | Static Dia. (in) | Static Height (in) | Thread Size (Option 1) | Dia. @ Max. Static Load (in) | Height @ Max. Static Load (in) |
|----------|------------|------------------------|------------------------|------------------------------|------------------|--------------------|------------------------|------------------------------|--------------------------------|
| 61549-2 | Black | 500 | 2000 | 1500 | 3.70 | 3.88 | 5/8-18 | 4.50 | 2.30 |
| 61549-3 | Green | 750 | 3000 | 2000 | | | | | |
| 61549-4 | Red | 1000 | 4000 | 3000 | | | | | |
| 61549-5 | Gray | 2000 | 8000 | 5500 | | | | | |
| 61550-4 | Gray | 10,000 | 40,000 | 16,000 | 8.50 | 8.69 | 1 1/2-12 | 10.50 | 5.00 |

Other mounting hole and thread sizes are available
Consult Tech Products for these options