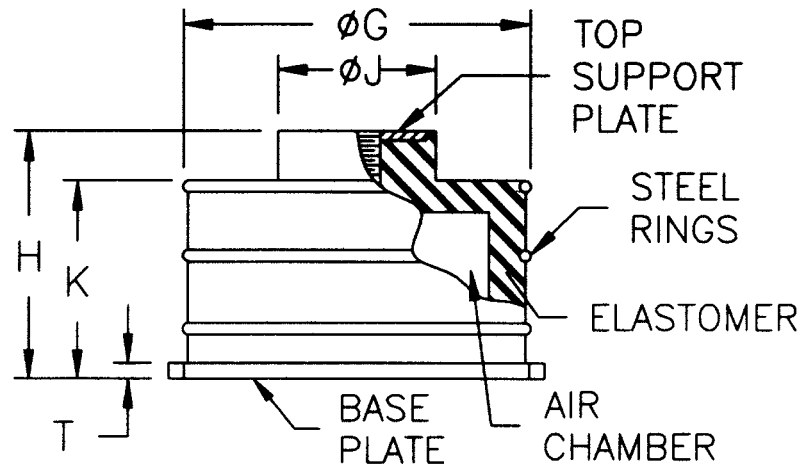
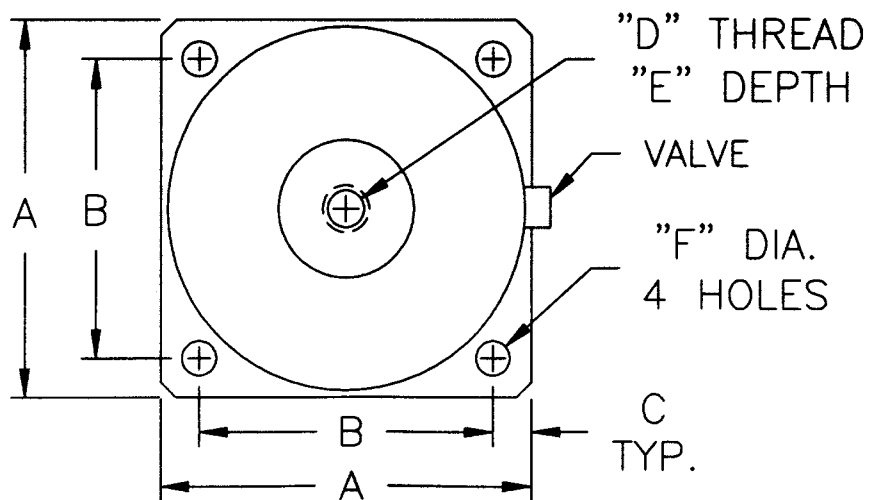


Pneumatic Mounts

Drawing



Drawing



Dimensions and Load Ratings

Part Number	Load (lbs)		A	B	C	D	E	F	G	H*	J	K	T
	Min.	Max.											
52001	20	100	3.00	2.38	.31	3/8-16	.47	.27	2.89	2.50	1.09	1.94	.12
52002	100	300	4.19	3.50	.34	1/2-13	.54	.29	4.14	2.50	2.06	1.94	.12
52003	300	550	5.13	4.25	.44	1/2-13	.54	.29	4.99	3.50	2.38	2.94	.12
52004	500	1200	6.88	6.00	.44	1/2-13	.54	.29	6.74	3.50	3.75	2.94	.12
52005	1200	2400	10.00	8.50	.75	5/8-11	.75	.56	9.66	3.50	5.44	2.94	.19
52006	2400	4800	13.50	12.00	.75	5/8-11	.75	.56	13.31	3.50	8.00	2.94	.19

*H = Free Height; H+ 1/4" = nominal loaded height for steady force application