

Universal Mounts



Stop Vibration, Noise, Shock

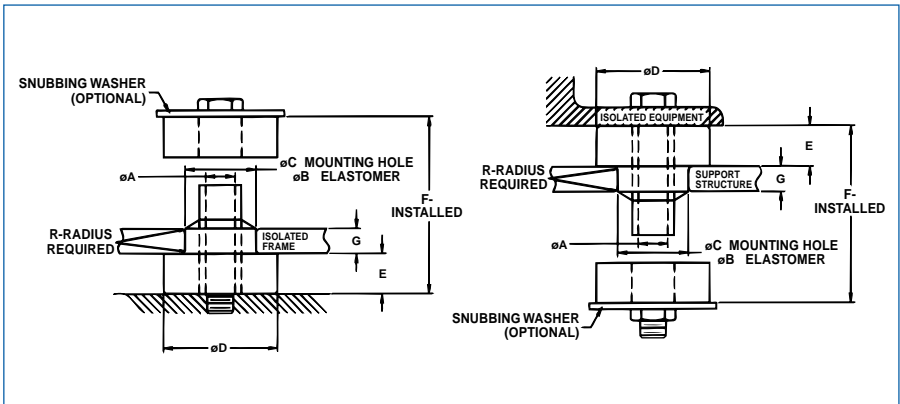
Low-cost, easy-to-install Universal Mounts provide fail-safe, all-attitude isolation for vehicle cabs, engines, transmissions and other equipment up to 4550 lbs. in mobile applications.

Consisting of two parts—an elastomeric ring and an elastomeric bushing bonded to a

center metal spacer—universal mounts are held in place with a through bolt.

With an operating temperature range of -20° to $+180^{\circ}\text{F}$, the standard neoprene elastomer resists ozone, oils and fuels while providing adequate rebound protection. Other elastomers are also available.

Dimensions

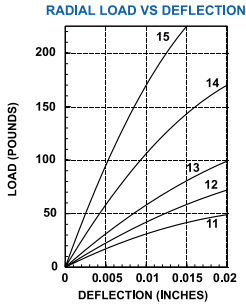
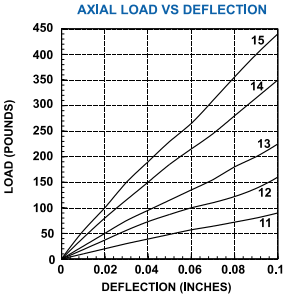


Part No.	A	B	C	D	E	F	G		R
							Thin Support	Thick Support	
60011 through 15	0.39	0.78	0.75	1.25	0.50	1.25	0.37	N/A	0.03
60021 through 25	0.53	1.31	1.25	1.87	0.78	1.94	0.50	0.56	0.06
60031 through 35	0.64	1.55	1.50	2.53	0.90	2.45	0.75	0.88	0.08
60041 through 45	0.94	2.30	2.25	3.50	1.00	2.88	1.00	1.12	0.12
60051 through 55	1.06	2.55	2.50	4.88	1.25	3.38	1.00	1.25	0.12
60165-1 through 5	0.64	1.55	1.50	2.53	0.90	1.83	0.25	0.25	0.08
60166-1 through 5	0.39	0.78	0.75	1.25	0.50	1.06	0.186	0.186	0.032

For thick support information, contact Tech Products

Universal Mounts

60011-15 Series



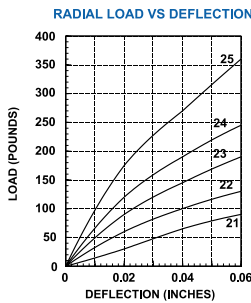
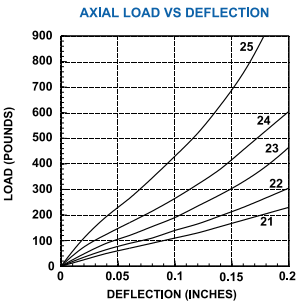
Curves are for Thin Support

Static Load Rating (lbs.)

Part No.	Color Code	Thin Support	
		Axial	Radial
60011	Yellow	35	18
60012	Red	80	27
60013	Green	130	36
60014	Blue	235	45
60015	White	280	55

Part No.	Color Code	Thick Support	
		Axial	Radial
60011	Yellow	N/A	N/A
60012	Red	N/A	N/A
60013	Green	N/A	N/A
60014	Blue	N/A	N/A
60015	White	N/A	N/A

60021-25 Series



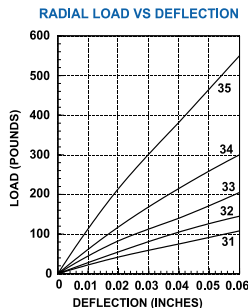
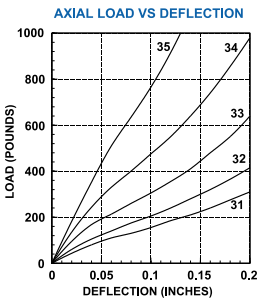
Curves are for Thin Support

Static Load Rating (lbs.)

Part No.	Color Code	Thin Support	
		Axial	Radial
60021	Yellow	65	45
60022	Red	125	80
60023	Green	170	125
60024	Blue	275	190
60025	White	390	290

Part No.	Color Code	Thick Support	
		Axial	Radial
60021	Yellow	135	55
60022	Red	180	85
60023	Green	240	130
60024	Blue	380	190
60025	White	630	290

60031-35 Series



Curves are for Thin Support

Static Load Rating (lbs.)

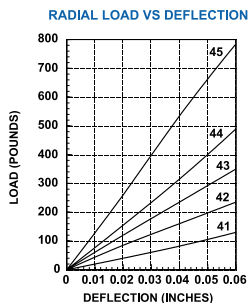
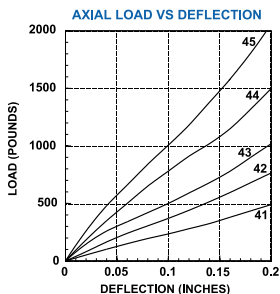
Part No.	Color Code	Thin Support	
		Axial	Radial
60031	Yellow	100	80
60032	Red	180	120
60033	Green	250	175
60034	Blue	350	265
60035	White	500	370

Part No.	Color Code	Thick Support	
		Axial	Radial
60031	Yellow	215	90
60032	Red	360	140
60033	Green	490	225
60034	Blue	860	385
60035	White	1330	690

Universal Mounts

60041-45 Series

Static Load Rating (lbs.)



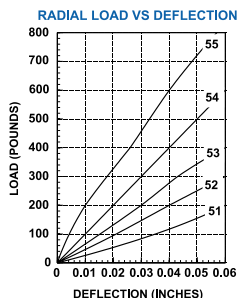
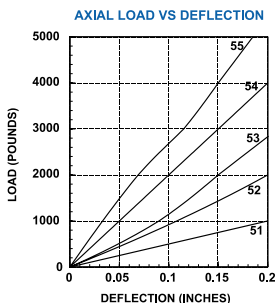
Part No.	Color Code	Thin Support	
		Axial	Radial
60041	Yellow	160	100
60042	Red	300	200
60043	Green	410	310
60044	Blue	520	420
60045	White	610	570

Part No.	Color Code	Thick Support	
		Axial	Radial
60041	Yellow	270	130
60042	Red	500	210
60043	Green	760	330
60044	Blue	1150	550
60045	White	2070	955

Curves are for Thin Support

60051-55 Series

Static Load Rating (lbs.)

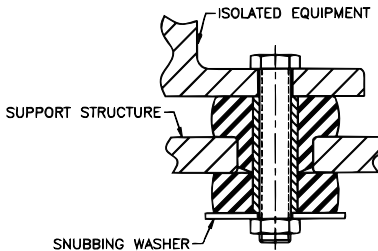
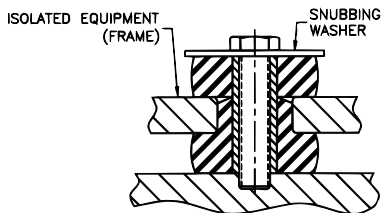


Part No.	Color Code	Thin Support	
		Axial	Radial
60051	Yellow	300	150
60052	Red	500	220
60053	Green	700	300
60054	Blue	900	470
60055	White	1200	660

Part No.	Color Code	Thick Support	
		Axial	Radial
60051	Yellow	1150	250
60052	Red	1925	350
60053	Green	2575	600
60054	Blue	3550	900
60055	White	4550	1400

Curves are for Thin Support

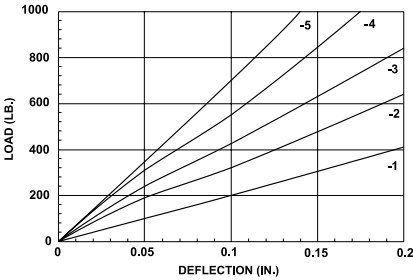
Mounting Configurations



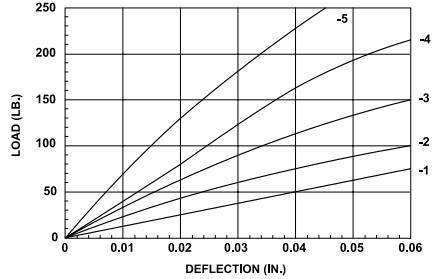
Universal Mounts

60165-1 thru -5 Series

AXIAL LOAD VS DEFLECTION



RADIAL LOAD VS DEFLECTION

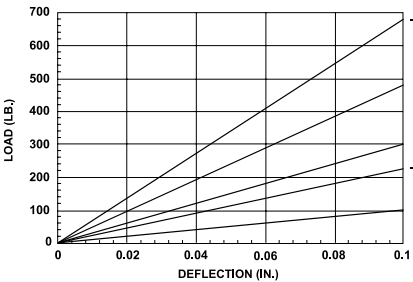


Static Load Rating (lbs.)

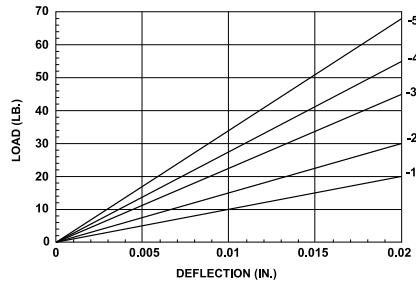
Part No.	Color Code	Axial	Radial
60165-1	Yellow	215	40
60165-2	Red	360	60
60165-3	Green	490	88
60165-4	Blue	860	133
60165-5	White	1330	185

60166-1 thru -5 Series

AXIAL LOAD VS DEFLECTION



RADIAL LOAD VS DEFLECTION



Static Load Rating (lbs.)

Part No.	Color Code	Axial	Radial
60166-1	Yellow	35	9
60166-2	Red	80	14
60166-3	Green	130	18
60166-4	Blue	235	23
60166-5	White	280	28