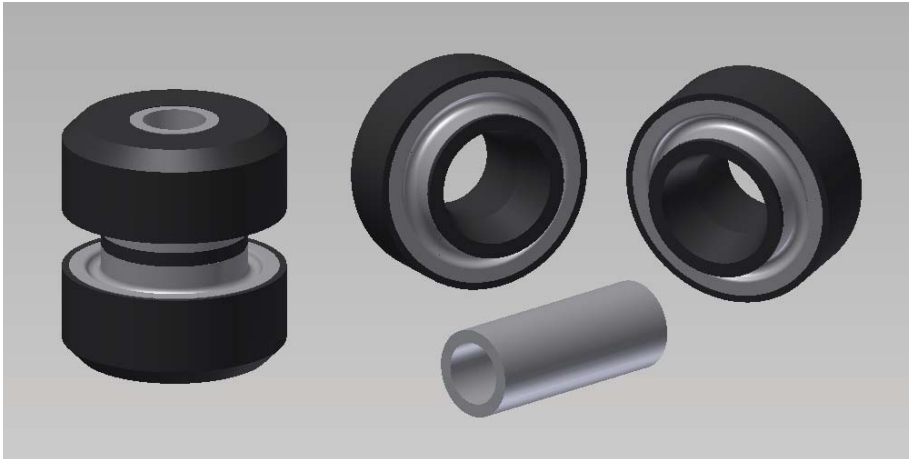


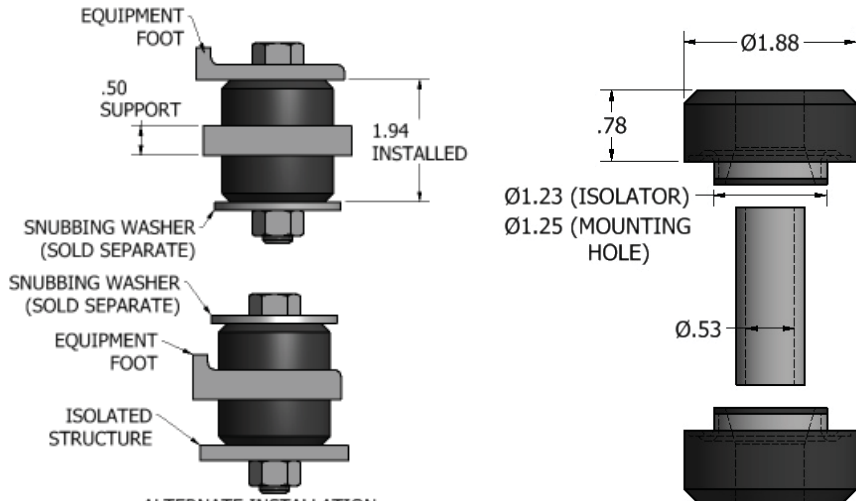
# Armor Plated Universal Mounts



The Armor Plated Universal Mount can be used in the same applications as the standard Universal Mounts. But since it has bonded-in steel wear surfaces, it can be used in more extreme environments. These steel wear surfaces eliminate the need for machining a radius in the support structure.

- Fail-Safe installation when snubbing washers (Page 75) are used
- 8-10 Hz natural frequency at rated load
- Oil, Fuel, and Solvent resistant Neoprene elastomer
- -20°F to 180°F operating temperature range

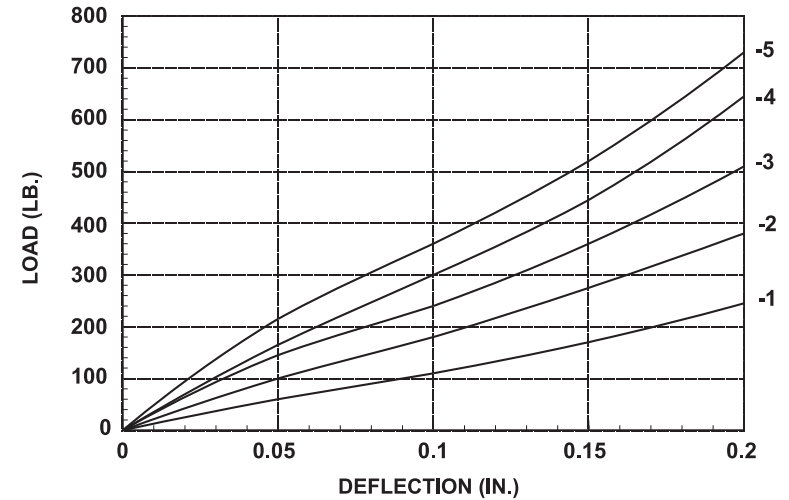
Part No.	Color Code	Max. Radial Load (lbs.)	Max. Axial Load (lbs.)
60270-1	Yellow	35	100
60270-2	Red	45	150
60270-3	Green	55	200
60270-4	Blue	65	250
60270-5	White	80	300



ALTERNATE INSTALLATION

# Armor Plated Universal Mounts

## 60270 SERIES AXIAL LOAD VS DEFLECTION



## 60270 SERIES RADIAL LOAD VS DEFLECTION

