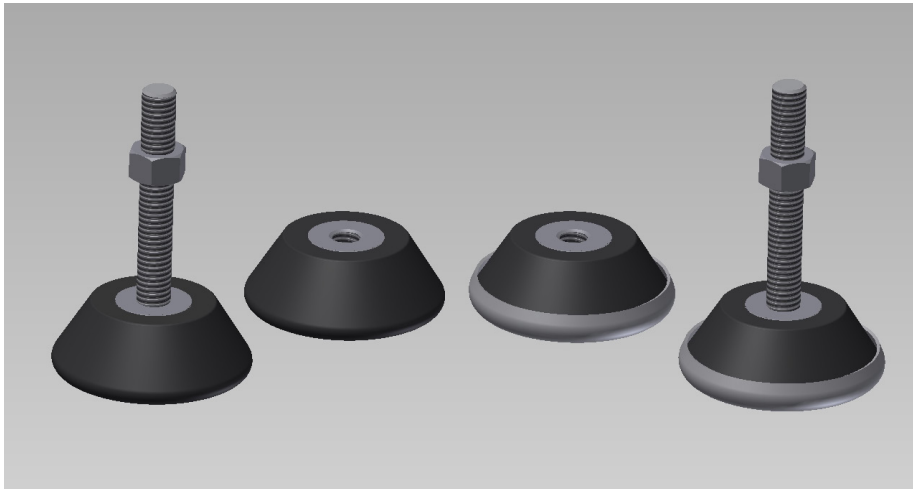


Mounting Feet



Tech Products Mounting Feet let you isolate all types of machinery and equipment from vibration and floor motion. They are made of neoprene bonded to a steel insert. All models are available with zinc-plated steel glides.

Multi-use Mounting Feet are used on business machines, light manufacturing machinery, precision equipment in fields such as optics, and almost anywhere else vibration presents a problem.

- Load capacity from 6 to 1000 lbs.
- Neoprene elastomer resistant to most oils, fuels, and solvents
- Steel Glide bottom available
- Available with attachment hardware
- **Add -A to Part Numbers for 2.5" epoxied stud and hex nut**

Without Glide		With Glide		
Part No.		SPREAD LOAD RANGE	POINT LOAD RANGE	
3/8-16 Thread Without Glide	3/8-16 Thread With Glide			
50553	50563	Yellow	30-125 lbs.	6-35 lbs.
50555	50565	Green	75-250	20-65
50557	50567	White	150-400	50-130
Approx. Deflection at Load Indicated		0.1-0.3"	0.05-0.25"	

Mounting Feet

Without Glide		With Glide		
Part No.		SPREAD LOAD RANGE	POINT LOAD RANGE	
1/2-13 Thread Without Glide	1/2-13 Thread With Glide			
50601	50604	Yellow	40-135 lbs.	10-40 lbs.
50602	50605	Green	80-250	30-80
50603	50606	White	200-450	70-180
Approx. Deflection at Load Indicated		0.1-0.3"	0.08-0.2"	

Heavy Duty Mounting Feet

Without Glide		With Glide		
Part No.		SPREAD LOAD RANGE	POINT LOAD RANGE	
1/2-13 Thread Without Glide	1/2-13 Thread With Glide			
50607	50617	Yellow	60-250 lbs.	20-80 lbs.
50608	50618	Green	90-450	60-300
50609	50619	White	225-1000	150-600
Approx. Deflection at Load Indicated		0.05-0.2"	0.05-0.2"	