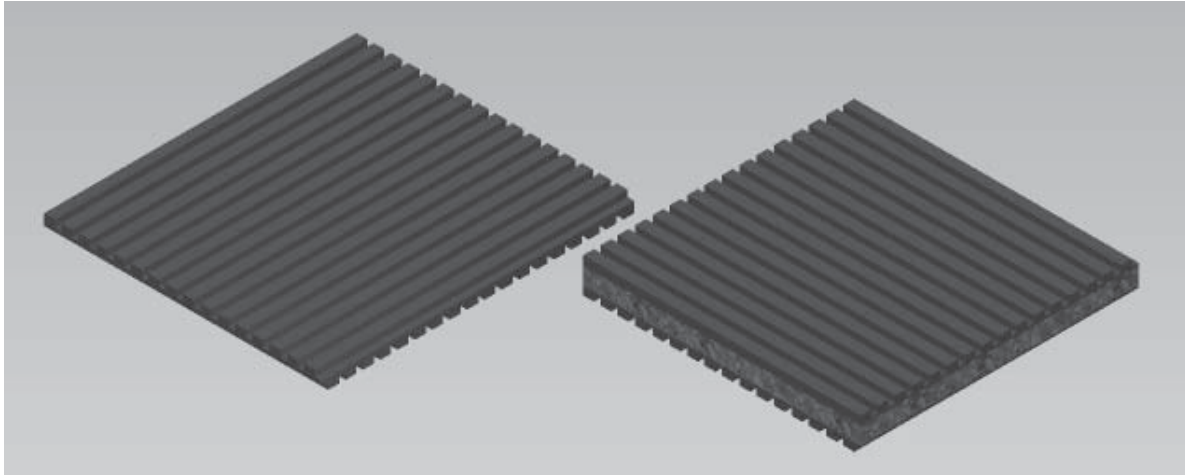


# Anti-Vibration Pad



The ribbed configuration of our Neoprene Pads provides firm footing to both floor and equipment, yet they allow mounted equipment to be relocated quickly and easily. Recommended for maximum loads of 50 psi.

Neoprene-Cork Pads accept a maximum load of 50 psi.

Natural Frequency approximately 10-15 Hz at maximum load.

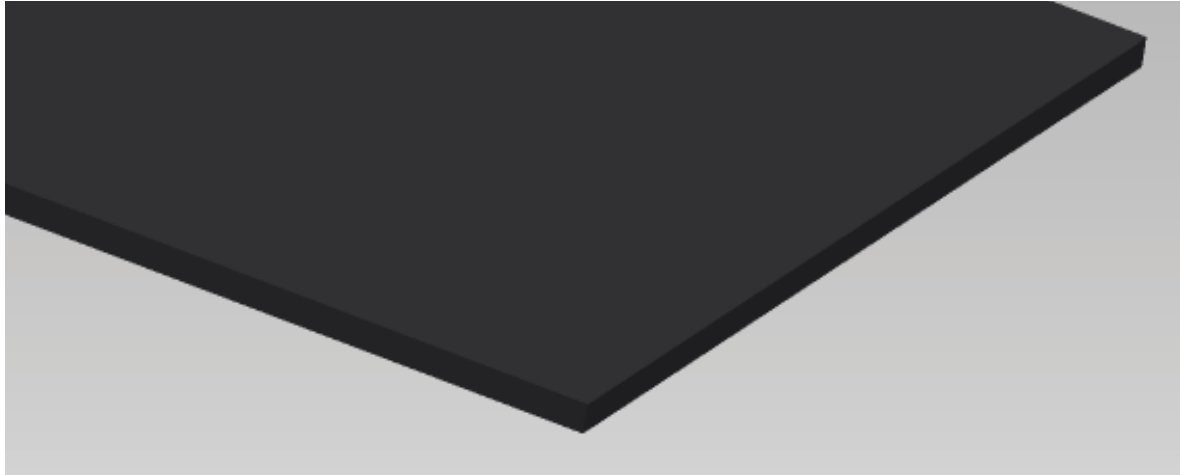
## Neoprene (Load Range 20-50 psi)

Part Number	Size (in.)
52347 Ribbed both sides	18 x 18 x 3/8
52348 Ribbed both sides	18 x 36 x 3/8
56780 Ribbed both sides	18 x 18 x 1/2

## Neoprene-Cork (Load Range 20-50 psi)

Part Number	Size (in.)
56803 Ribbed both sides	12 x 12 x 1
52337 Ribbed both sides	18 x 18 x 1
56779 Ribbed both sides	18 x 36 x 1

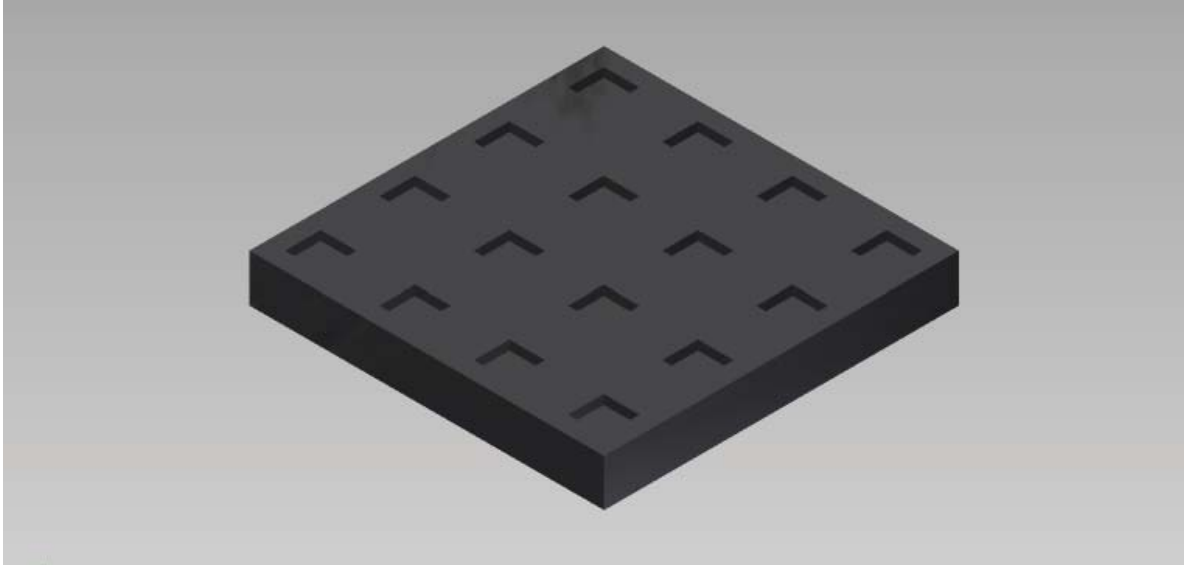
# Compression Pad



Multi-purpose neoprene isolation pads are used to eliminate vibration and transmitted noise. They offer good physical strength and high energy-absorbing characteristics.

Part Number	Color Code	Size (in.)	Max. Load (psi)
50100	Red	24 x 24 x 1/2	100
52330	Green	24 x 24 x 1/2	200
52331	White	24 x 24 x 1/2	300
52332	Green	12 x 12 x 1/2	200
52333	White	12 x 12 x 1/2	300
52334	Green	12 x 24 x 1/2	200
52335	White	12 x 24 x 1/2	300
52355	Blue-White	36 x 36 x 1/2	300
52746	Black	48 x 48 x 1/2	300

# Fabcel Pad



Fabcel vibration isolation pad is manufactured using the same nitrile compound developed in 1962. The properties of the Fabcel pad are designed to provide low frequency vibration isolation and reduction of impact shock.

Fabcel pad has been used for over 40 years for mounting machinery and sensitive equipment where absorption of impact shock or isolation of transmitted vibration is desired. Fabcel pads may be bonded together ("layered") to achieve the desired isolation efficiency for any application.

## Features:

- Fabcel pad can withstand loads up to 300 psi.
- Fabcel pad can have a vertical natural frequency as low as 5.0 Hz and a horizontal natural frequency as low as 3.0 Hz.
- Fabcel pad has a high energy storage rate per unit volume which makes it ideal for certain shock isolation applications.

Part No.	Max. Load (psi)	Size (in.)
Fabcel 25	25	18 x 18 x 5/16
Fabcel 50	50	18 x 18 x 5/16
Fabcel 100	100	18 x 18 x 5/16
Fabcel 200	200	18 x 18 x 1/2
Fabcel 300	300	18 x 18 x 1/2