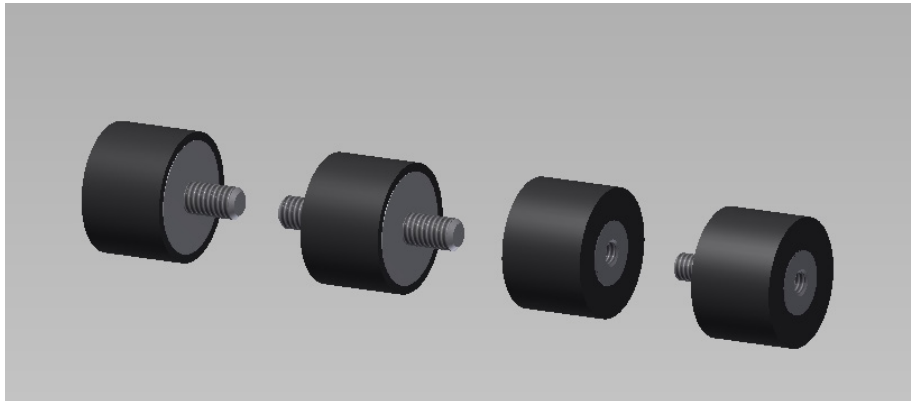


Stud/Plate Mounts



Tech Products offers one of the industry's largest selections of these multi-purpose mounts.

Stud/Plate mounts are known throughout the industry by several names including: bumpers, snubbers, feet, sandwich mounts, shockmounts, shearmounts, cylindrical mounts, isolators, levelers, and insulators.

Tech Products' offers other sizes of mounts which may not be shown. Please contact us if you cannot find a specific size needed or if you need assistance selecting the proper mount.

Features:

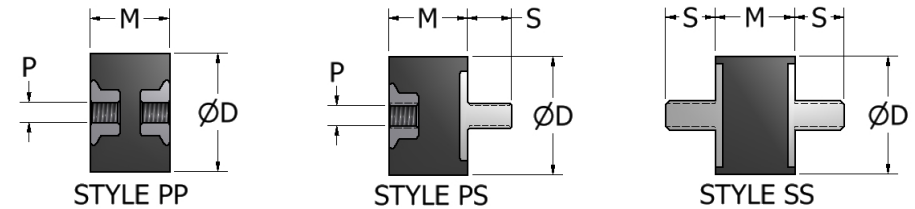
- Many sizes available from stock
- Standard and metric thread sizes available
- Elastomer options include natural rubber, neoprene, silicone and more
- Corrosion resistant zinc plated inserts
- Available in load ratings from 1 to 1200 lbs.

Visit www.novibes.com for a searchable database of Tech Products Stud/Plate Mounts.

| Maximum Tightening Torque | |
|---------------------------|----------|
| UNC Thread | lbs-inch |
| 6-32 | 10 |
| 8-32 | 15 |
| 10-32 | 25 |
| 1/4-20 | 53 |
| 5/16-18 | 105 |
| 3/8-16 | 192 |
| 1/2-13 | 600 |

Note: Do not twist elastomer during installation

Stud/Plate Mounts (6-32)



Style PP

| Part No. | D | M | P (Depth) | Max. Shear (lbs.) | Max. Comp. (lbs.) |
|----------|------|-----|------------|-------------------|-------------------|
| 50908 | 3/8 | 1/2 | 6-32 (1/8) | 3.5 | 4 |
| 50903* | 9/16 | 1/2 | 6-32 (1/8) | 4.5 | 9.5 |
| 50905* | 9/16 | 1/2 | 6-32 (1/8) | 6 | 18 |
| 50907* | 9/16 | 1/2 | 6-32 (1/8) | 9 | 26 |

Standard elastomer is Natural Rubber, (*) indicates Neoprene

Style PS

| Part No. | D | M | 6-32 x S | P (Depth) | Max. Shear (lbs.) | Max. Comp. (lbs.) |
|----------|------|-------|----------|--------------|-------------------|-------------------|
| 50168* | 3/8 | 3/8 | 1/4 | 6-32 (5/32)# | 3.4 | 4.4 |
| 50169* | 3/8 | 5/16 | 1/4 | 6-32 (5/32) | 3 | 4 |
| 50172* | 3/8 | 5/16 | 3/16 | 6-32 (5/32) | 3 | 4 |
| 50177* | 3/8 | 5/16 | 3/8 | 6-32 (5/32) | 4 | 5 |
| 50181 | 7/16 | 13/32 | 1/4 | 6-32 (1/8) | 2.5 | 3.8 |
| 50184* | 7/16 | 13/32 | 1/4 | 6-32 (1/8) | 3.4 | 4.4 |
| 50194* | 7/16 | 13/32 | 1/4 | 6-32 (1/8) | 6.5 | 14.5 |
| 50171* | 7/16 | 1/2 | 3/8 | 6-32 (5/32)# | 3.5 | 4.5 |
| 50170* | 7/16 | 1/2 | 3/8 | 6-32 (5/32)# | 4.4 | 6 |
| 50176* | 7/16 | 1/2 | 1/4 | 6-32 (5/32)# | 4.4 | 6 |
| 50986* | 7/16 | 1/2 | 1/4 | 6-32 (1/8)# | 3.5 | 4.5 |
| 65021* | 7/16 | 5/8 | 1/4 | 6-32 (1/8) | 3 | 4 |
| 50838* | 7/16 | 3/4 | 1/4 | 6-32 (1/8) | 2.5 | 3.5 |

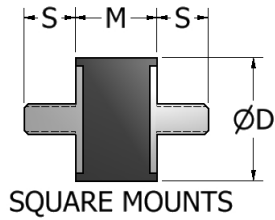
Standard elastomer is Natural Rubber, (*) indicates Neoprene

(#) indicates blind insert

Style SS

| Part No. | D | M | 6-32 x S | Max. Shear (lbs.) | Max. Comp. (lbs.) |
|----------|------|-------|-----------|-------------------|-------------------|
| 50178 | 7/16 | 13/32 | 1/4 | 3 | 4 |
| 50179 | 7/16 | 13/32 | 1/4 | 3.2 | 5 |
| 50196 | 7/16 | 13/32 | 3/8 - 1/4 | 3 | 4 |

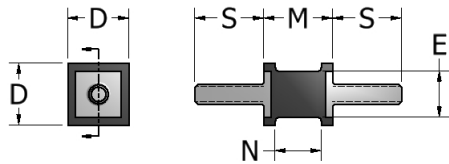
Stud/Plate Mounts (8-32)



SQUARE MOUNTS

| Part No. | D (Square) | M | 8-32 x S | Max. Shear (lbs.) | Max. Comp. (lbs.) |
|----------|------------|------|-------------|-------------------|-------------------|
| 51007* | 3/8 | 5/16 | 3/8 | 4 | 6.2 |
| 51010 | 3/8 | 5/16 | 7/32 | 9 | 13 |
| 51011 | 3/8 | 5/16 | 7/32 | 3 | 4.5 |
| 51013 | 3/8 | 5/16 | 7/32 | 4 | 6.2 |
| 51014* | 3/8 | 5/16 | 3/8 - 9/16 | 8 | 11.8 |
| 51015* | 3/8 | 5/16 | 7/32 | 3 | 4.5 |
| 51017 | 3/8 | 5/16 | 3/8 | 3.5 | 5.2 |
| 51019 | 3/8 | 5/16 | 3/8 | 3 | 4.5 |
| 51025* | 3/8 | 5/16 | 7/32 | 4 | 6.2 |
| 51026 | 3/8 | 5/16 | 7/32 - 9/16 | 8 | 11.8 |
| 51407 | 3/8 | 1/2 | 7/32 | 3 | 5 |
| 51001 | 3/8 | 1/2 | 3/8 | 3 | 5 |
| 51002 | 3/8 | 1/2 | 3/8 | 3.6 | 6.2 |
| 51003 | 3/8 | 1/2 | 3/8 | 5.7 | 10 |
| 51004 | 3/8 | 1/2 | 3/8 | 7 | 13.5 |

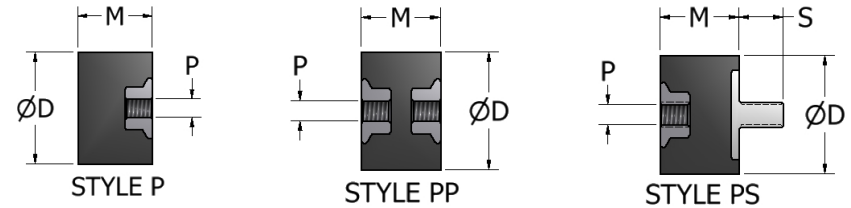
Standard elastomer is Natural Rubber, (*) indicates Neoprene



| Part No. | D (Square) | E (Dia.) | M | N | 8-32 x S | Max. Shear (lbs.) | Max. Comp. (lbs.) |
|----------|------------|----------|------|-----|----------|-------------------|-------------------|
| 51021 | 1/2 | 3/8 | 9/16 | 3/8 | 9/16 | 2.8 | 6.8 |
| 51022 | 1/2 | 3/8 | 9/16 | 3/8 | 9/16 | 3.3 | 8.5 |
| 51023* | 1/2 | 3/8 | 9/16 | 3/8 | 9/16 | 5.3 | 12 |
| 51024* | 1/2 | 3/8 | 9/16 | 3/8 | 9/16 | 7.5 | 14.5 |

Standard elastomer is Natural Rubber, (*) indicates Neoprene

Stud/Plate Mounts (8-32)



Style P

| Part No. | D | M | P | Max. Shear (lbs.) | Max. Comp. (lbs.) |
|----------|------|-----|------|-------------------|-------------------|
| 51110 | 7/16 | 1/2 | 8-32 | - | 4.5 |
| 51112 | 7/16 | 1/2 | 8-32 | - | 8 |
| 51060 | 9/16 | 1/2 | 8-32 | - | 9.5 |
| 51062 | 9/16 | 1/2 | 8-32 | - | 18 |

P thread depth is minimum one thread diameter

Style PP

| Part No. | D | M | P | Max. Shear (lbs.) | Max. Comp. (lbs.) |
|----------|------|-----|------|-------------------|-------------------|
| 51100 | 7/16 | 1/2 | 8-32 | 3.3 | 4.5 |
| 51102 | 7/16 | 1/2 | 8-32 | 4.8 | 8 |
| 51050 | 9/16 | 1/2 | 8-32 | 4.5 | 9.5 |
| 51051 | 9/16 | 1/2 | 8-32 | 5 | 14 |
| 51052 | 9/16 | 1/2 | 8-32 | 6 | 18 |
| 51053 | 9/16 | 1/2 | 8-32 | 7 | 22 |
| 65024* | 9/16 | 1/2 | 8-32 | 8 | 25 |

P thread depth is minimum one thread diameter

Style PS

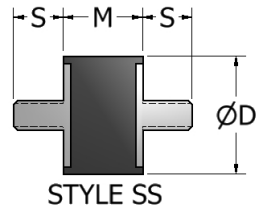
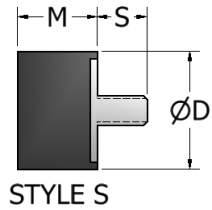
| Part No. | D | M | 8-32 x S | P | Max. Shear (lbs.) | Max. Comp. (lbs.) |
|----------|------|-----|----------|-------|-------------------|-------------------|
| 51090 | 7/16 | 1/2 | 3/8 | 8-32 | 3.3 | 4.5 |
| 51092 | 7/16 | 1/2 | 3/8 | 8-32 | 4.8 | 8 |
| 51040 | 9/16 | 1/2 | 1/4 | 8-32 | 4.5 | 9.5 |
| 51041 | 9/16 | 1/2 | 1/4 | 8-32 | 5.4 | 14 |
| 51042 | 9/16 | 1/2 | 3/8 | 8-32 | 6 | 18 |
| 51044 | 9/16 | 1/2 | 3/8 | 8-32 | 4.5 | 9.5 |
| 51056* | 9/16 | 1/2 | 3/8 | 8-32 | 6 | 18 |
| 51058 | 9/16 | 1/2 | 3/8 | 8-32# | 4.5 | 9.5 |
| 51067 | 9/16 | 1/2 | 3/8 | 8-32 | 4.5 | 9.5 |

Standard elastomer is Natural Rubber, (*) indicates Neoprene

P thread depth is minimum one thread diameter

(#) indicates blind insert

Stud/Plate Mounts (8-32)



Style S

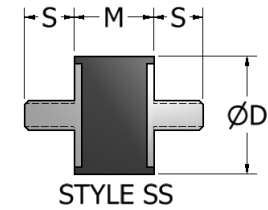
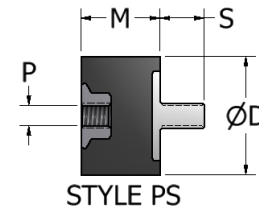
| Part No. | D | M | 8-32 x S | Max. Shear (lbs.) | Max. Comp. (lbs.) |
|----------|------|-----|----------|-------------------|-------------------|
| 51120 | 7/16 | 1/2 | 3/8 | - | 4.5 |
| 51122 | 7/16 | 1/2 | 3/8 | - | 8 |
| 51070 | 9/16 | 1/2 | 3/8 | - | 9.5 |
| 51072 | 9/16 | 1/2 | 3/8 | - | 18 |

Style SS

| Part No. | D | M | 8-32 x S | Max. Shear (lbs.) | Max. Comp. (lbs.) |
|----------|------|-----|----------|-------------------|-------------------|
| 50912 | 3/8 | 1/2 | 3/8 | 1.5 | 10 |
| 50913 | 3/8 | 1/2 | 3/8 | 3 | 17 |
| 50914 | 3/8 | 1/2 | 3/8 | 2 | 13 |
| 50915 | 3/8 | 1/2 | 3/8 | 1 | 7 |
| 50916* | 3/8 | 1/2 | 3/8 | 0.5 | 4 |
| 50917* | 3/8 | 1/2 | 3/8 | 1 | 7 |
| 50918* | 3/8 | 1/2 | 3/8 | 1.5 | 10 |
| 50919* | 3/8 | 1/2 | 3/8 | 3 | 17 |
| 50920* | 3/8 | 1/2 | 3/8 | 4.5 | 23 |
| 51081 | 7/16 | 1/2 | 3/8 | 3.3 | 4.5 |
| 51082 | 7/16 | 1/2 | 3/8 | 3.9 | 6.4 |
| 51083* | 7/16 | 1/2 | 3/8 | 4.8 | 8 |
| 51084* | 7/16 | 1/2 | 3/8 | 3.3 | 4.5 |
| 51031 | 9/16 | 1/2 | 3/8 | 4.5 | 9.5 |
| 51032 | 9/16 | 1/2 | 3/8 | 5.2 | 13 |
| 51033* | 9/16 | 1/2 | 3/8 | 6 | 18 |
| 51034* | 9/16 | 1/2 | 3/8 | 13 | 25 |
| 51036 | 9/16 | 1/2 | 1/2 | 4.5 | 9.5 |
| 51055* | 9/16 | 1/2 | 1/2 | 13 | 25 |

Standard elastomer is Natural Rubber, (*) indicates Neoprene

Stud/Plate Mounts (10-32)



Style PS

| Part No. | D | M | S | P | Max. Shear (lbs.) | Max. Comp. (lbs.) |
|----------|------|-----|-------------|-------|-------------------|-------------------|
| 51045 | 9/16 | 1/2 | 8-32 x 3/8 | 10-32 | 4.5 | 9.5 |
| 51047 | 9/16 | 1/2 | 10-32 x 3/8 | 10-32 | 6 | 18 |
| 51059* | 9/16 | 1/2 | 10-32 x 3/8 | 10-32 | 5 | 16 |
| 51066 | 9/16 | 1/2 | 10-32 x 3/8 | 8-32 | 4.5 | 9.5 |
| 51068 | 9/16 | 1/2 | 10-32 x 3/8 | 8-32 | 6 | 18 |
| 51136 | 1 | 3/4 | 10-32 x 3/8 | 10-32 | 24 | 55 |

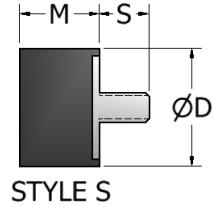
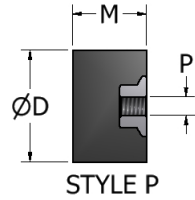
P thread depth is minimum one thread diameter

Style SS

| Part No. | D | M | 10-32 x S | Max. Shear (lbs.) | Max. Comp. (lbs.) |
|----------|------|-----|------------|-------------------|-------------------|
| 51037* | 9/16 | 1/2 | 3/8 | 6 | 18 |
| 51048 | 9/16 | 1/2 | 3/8 - 3/16 | 6 | 18 |
| 51057 | 9/16 | 1/2 | 3/8 | 5 | 16 |
| 51135 | 1 | 3/4 | 3/8 | 15 | 44 |

Standard elastomer is Natural Rubber, (*) indicates Neoprene

Stud/Plate Mounts (1/4-20)



Style P

| Part No. | D | M | P | Max. Shear (lbs.) | Max. Comp. (lbs.) |
|----------|-----|-------|--------|-------------------|-------------------|
| 51205* | 3/4 | 1/2 | 1/4-20 | - | 34 |
| 50938* | 1 | 17/32 | 1/4-20 | - | 70 |
| 51181 | 1 | 3/4 | 1/4-20 | - | 45 |

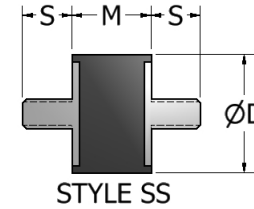
P thread depth is minimum one thread diameter

Style S

| Part No. | D | M | 1/4-20 x S | Max. Shear (lbs.) | Max. Comp. (lbs.) |
|----------|-------|-------|------------|-------------------|-------------------|
| 51494* | 3/4 | 1/2 | 3/4 | - | 30 |
| 51138 | 1 | 17/32 | 3/8 | - | 40 |
| 51139 | 1 | 17/32 | 3/8 | - | 70 |
| 51140 | 1 | 17/32 | 3/8 | - | 100 |
| 51581 | 1 | 41/64 | 1/2 | - | 35 |
| 51185 | 1 | 3/4 | 1/2 | - | 44 |
| 51187 | 1 | 3/4 | 1/2 | - | 55 |
| 51191* | 1 | 3/4 | 7/8 | - | 55 |
| 50783* | 1 | 27/32 | 3/4 | - | 50 |
| 51195* | 1 | 1 | 1/2 | - | 50 |
| 51196 | 1 | 1 | 3/8 | - | 70 |
| 51197 | 1 | 1 | 1/4 | - | 70 |
| 50889* | 1 | 1 | 3/4 | - | 70 |
| 50828* | 1 1/4 | 3/4 | 5/8 | - | 120 |
| 51176* | 1 1/4 | 1 | 1/4 | - | 70 |

Standard elastomer is Natural Rubber, (*) indicates Neoprene

Stud/Plate Mounts (1/4-20)



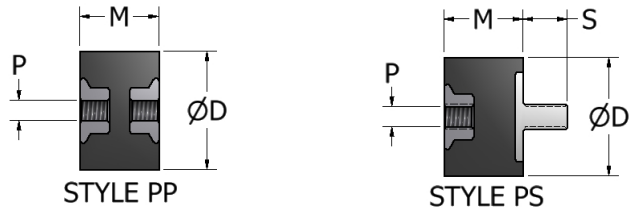
Style SS

| Part No. | D | M | 1/4-20 x S | Max. Shear (lbs.) | Max. Comp. (lbs.) |
|----------|-------|-------|------------|-------------------|-------------------|
| 50820* | 3/4 | 1/2 | 1/2 | 12 | 28 |
| 50859* | 1 | 3/8 | 1/2 | 30 | 60 |
| 51123* | 1 | 17/32 | 1/2 | 30 | 45 |
| 51127 | 1 | 17/32 | 3/8 | 30 | 45 |
| 51128 | 1 | 17/32 | 3/8 | 34 | 70 |
| 51130 | 1 | 17/32 | 1/2 - 1/4 | 32 | 45 |
| 51131 | 1 | 17/32 | 1/2 | 15 | 44 |
| 51132 | 1 | 17/32 | 1/2 | 30 | 45 |
| 51133 | 1 | 17/32 | 1/2 | 34 | 70 |
| 50965* | 1 | 1/2 | 1/2 | 35 | 70 |
| 51154* | 1 | 3/4 | 3/8 | 21 | 55 |
| 51186* | 1 | 3/4 | 3/8 | 25 | 60 |
| 51141 | 1 | 3/4 | 1/2 | 15 | 44 |
| 51142 | 1 | 3/4 | 1/2 | 18 | 50 |
| 51143 | 1 | 3/4 | 1/2 | 21 | 55 |
| 51144* | 1 | 3/4 | 1/2 | 18 | 50 |
| 51146* | 1 | 3/4 | 1/2 | 21 | 55 |
| 50855* | 1 | 3/4 | 1/2 | 25 | 60 |
| 51173* | 1 | 3/4 | 1/2 | 15 | 44 |
| 51147 | 1 | 3/4 | 5/8 | 18 | 50 |
| 51148* | 1 | 3/4 | 5/8 | 25 | 60 |
| 51150* | 1 | 3/4 | 3/4 | 15 | 44 |
| 51152 | 1 | 3/4 | 3/4 | 21 | 55 |
| 51153* | 1 | 3/4 | 3/4 | 21 | 55 |
| 51158 | 1 | 3/4 | 3/4 | 18 | 50 |
| 51160* | 1 | 3/4 | 3/4 | 25 | 60 |
| 51155* | 1 | 3/4 | 1/4 - 5/8 | 25 | 60 |
| 51289 | 1 | 3/4 | 3/8 - 1/2 | 30 | 70 |
| 51157* | 1 | 3/4 | 1/2 - 3/4 | 25 | 60 |
| 50888* | 1 | 3/4 | 1/2 - 3/4 | 21 | 55 |
| 51184* | 1 | 3/4 | 1/2 - 3/4 | 15 | 44 |
| 51159 | 1 | 3/4 | 1/2 - 1 | 30 | 70 |
| 51164* | 1 | 1 | 1/2 | 12 | 35 |
| 51290* | 1 1/8 | 1 1/2 | 5/8 | 10 | 20 |
| 50773 | 1 1/4 | 1 1/4 | 5/8 | 30 | 80 |

Standard elastomer is Natural Rubber, (*) indicates Neoprene

Standard inserts are zinc plated

Stud/Plate Mounts (1/4-20)



Style PP

| Part No. | D | M | P | Max. Shear (lbs.) | Max. Comp. (lbs.) |
|----------|---|-----|--------|-------------------|-------------------|
| 50924 | 1 | 3/4 | 1/4-20 | 25 | 65 |
| 51172 | 1 | 3/4 | 1/4-20 | 20 | 55 |

P thread depth is minimum one thread diameter

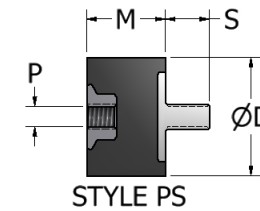
Style PS

| Part No. | D | M | 1/4-20 x S | P | Max. Shear (lbs.) | Max. Comp. (lbs.) |
|----------|-----|-------|------------|--------|-------------------|-------------------|
| 50823* | 5/8 | 5/8 | 1/2 | 1/4-20 | 5 | 15 |
| 51201* | 3/4 | 1/2 | 1/2 | 1/4-20 | 8 | 21 |
| 51202* | 3/4 | 1/2 | 1/2 | 1/4-20 | 12 | 28 |
| 51203* | 3/4 | 1/2 | 1/2 | 1/4-20 | 16 | 34 |
| 51204* | 3/4 | 1/2 | 1/2 | 1/4-20 | 20 | 40 |
| 50839* | 1 | 1/2 | 1/2 | 1/4-20 | 35 | 70 |
| 51129* | 1 | 17/32 | 1/2 | 1/4-20 | 32 | 45 |
| 51145* | 1 | 3/4 | 1/2 | 1/4-20 | 18 | 50 |
| 51151* | 1 | 3/4 | 3/8 | 1/4-20 | 24 | 55 |
| 51156* | 1 | 3/4 | 3/8 | 1/4-20 | 28 | 65 |
| 51161 | 1 | 3/4 | 1/2 | 1/4-20 | 18 | 45 |
| 51162 | 1 | 3/4 | 1/2 | 1/4-20 | 20 | 50 |
| 51163 | 1 | 3/4 | 1/2 | 1/4-20 | 21 | 55 |
| 51166* | 1 | 3/4 | 1/2 | 1/4-20 | 35 | 75 |
| 51188* | 1 | 3/4 | 1/2 | 1/4-20 | 30 | 65 |
| 51582 | 1 | 3/4 | 3/4 | 1/4-20 | 18 | 45 |
| 51137 | 1 | 1 | 1/2 | 1/4-20 | 10 | 30 |
| 51198* | 1 | 1 | 1/2 | 1/4-20 | 20 | 50 |
| 50782* | 1 | 1 | 3/4 | 1/4-20 | 15 | 40 |

Standard elastomer is Natural Rubber, (*) indicates Neoprene

P thread depth is minimum one thread diameter

Stud/Plate Mounts (5/16-18)



Style PS

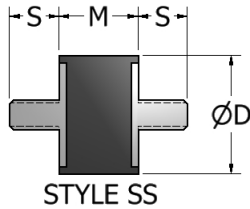
| Part No. | D | M | 5/16-18 x S | P | Max. Shear (lbs.) | Max. Comp. (lbs.) |
|----------|-------|-------|-------------|---------|-------------------|-------------------|
| 51283* | 1 | 1/2 | 9/16 | 5/16-18 | 16 | 40 |
| 51284* | 1 | 1/2 | 9/16 | 5/16-18 | 22 | 45 |
| 51285* | 1 | 1/2 | 9/16 | 5/16-18 | 35 | 70 |
| 51286* | 1 | 1/2 | 9/16 | 5/16-18 | 40 | 78 |
| 50835*^ | 1 | 3/4 | 3/8 | 5/16-18 | 40 | 80 |
| 51234 | 1 | 3/4 | 1/2 | 5/16-18 | 16 | 45 |
| 51258 | 1 | 3/4 | 9/16 | 5/16-18 | 40 | 80 |
| 51276* | 1 | 3/4 | 5/16 | 5/16-18 | 16 | 45 |
| 51277* | 1 | 3/4 | 5/16 | 5/16-18 | 19 | 52 |
| 51278* | 1 | 3/4 | 5/16 | 5/16-18 | 25 | 62 |
| 51279* | 1 | 3/4 | 5/16 | 5/16-18 | 31 | 70 |
| 51313* | 1 1/4 | 1 | 3/4 | 5/16-18 | 25 | 72 |
| 51314* | 1 1/4 | 1 | 3/4 | 5/16-18 | 38 | 92 |
| 51327* | 1 1/4 | 1 1/4 | 9/16 | 5/16-18 | 21 | 41 |
| 51328* | 1 1/4 | 1 1/4 | 9/16 | 5/16-18 | 31 | 64 |
| 51329* | 1 1/4 | 1 1/4 | 9/16 | 5/16-18 | 45 | 86 |
| 51330* | 1 1/4 | 1 1/4 | 9/16 | 5/16-18 | 63 | 120 |
| 50780* | 1 1/4 | 1 1/4 | 3/4 | 5/16-18 | 63 | 120 |
| 50817* | 1 1/4 | 1 1/4 | 3/4 | 5/16-18 | 85 | 175 |
| 51352 | 1 3/8 | 1 | 9/16 | 5/16-18 | 66 | 96 |
| 65007*^ | 1 3/8 | 1 | 9/16 | 5/16-18 | 66 | 96 |
| 50928* | 1 3/8 | 1 1/2 | 5/8 | 5/16-18 | 55 | 100 |
| 50975* | 1 3/8 | 1 1/2 | 5/8 | 5/16-18 | 65 | 125 |
| 51376 | 1 1/2 | 1 | 9/16 | 5/16-18 | 30 | 95 |
| 51377 | 1 1/2 | 1 | 9/16 | 5/16-18 | 40 | 135 |
| 51378 | 1 1/2 | 1 | 9/16 | 5/16-18 | 50 | 185 |
| 51379 | 1 1/2 | 1 | 9/16 | 5/16-18 | 65 | 210 |
| 51400* | 1 1/2 | 1 | 5/8 | 5/16-18 | 45 | 185 |
| 51542* | 1 1/2 | 1 | 9/16 | 5/16-18 | 40 | 135 |

Standard elastomer is Natural Rubber, (*) indicates Neoprene

P thread depth is minimum one thread diameter

Standard inserts are zinc plated, (^) indicates phosphate finish

Stud/Plate Mounts (5/16-18)

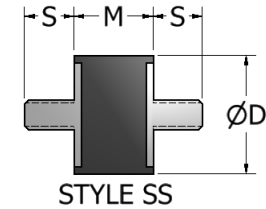


Style SS

| Part No. | D | M | 5/16-18 x S | Max. Shear (lbs.) | Max. Comp. (lbs.) |
|----------|-------|-------|-------------|-------------------|-------------------|
| 50852*^ | 1 | 1/2 | 5/8 | 45 | 90 |
| 51239 | 1 | 3/4 | 3/8 | 22 | 55 |
| 51240* | 1 | 3/4 | 3/8 | 22 | 58 |
| 51241 | 1 | 3/4 | 9/16 | 15 | 44 |
| 51242 | 1 | 3/4 | 9/16 | 18 | 50 |
| 51243 | 1 | 3/4 | 9/16 | 22 | 58 |
| 51247 | 1 | 3/4 | 5/8 | 15 | 44 |
| 51251 | 1 | 3/4 | 3/4 | 15 | 44 |
| 51252 | 1 | 3/4 | 3/4 | 18 | 50 |
| 51253 | 1 | 3/4 | 3/4 | 22 | 58 |
| 51257* | 1 | 3/4 | 9/16 | 22 | 58 |
| 51260* | 1 | 3/4 | 1/2 - 7/8 | 22 | 50 |
| 51280* | 1 | 3/4 | 1/2 - 7/8 | 18 | 50 |
| 51282* | 1 | 3/4 | 1/2 - 7/8 | 25 | 60 |
| 51262* | 1 | 1 | 9/16 | 12 | 35 |
| 51263 | 1 | 1 | 9/16 | 16 | 42 |
| 51265 | 1 | 1 | 3/4 | 35 | 70 |
| 51266 | 1 | 1 | 3/4 | 8 | 25 |
| 51267 | 1 | 1 | 3/4 | 12 | 35 |
| 51270 | 1 | 1 | 1/2 - 3/4 | 12 | 35 |
| 50825 | 1 | 1 | 1/2 | 30 | 70 |
| 51296 | 1 | 1 1/2 | 5/8 | 20 | 45 |
| 51296-1 | 1 | 1 1/2 | 5/8 | 28 | 60 |
| 50798* | 1 1/4 | 3/4 | 9/16 | 25 | 60 |
| 51301 | 1 1/4 | 3/4 | 9/16 | 36 | 87 |
| 51302 | 1 1/4 | 3/4 | 9/16 | 43 | 98 |
| 51303 | 1 1/4 | 3/4 | 9/16 | 52 | 120 |
| 51304 | 1 1/4 | 3/4 | 9/16 | 45 | 93 |
| 51305* | 1 1/4 | 3/4 | 1/2 - 3/4 | 45 | 93 |
| 51306 | 1 1/4 | 3/4 | 3/4 | 36 | 87 |
| 51307 | 1 1/4 | 3/4 | 3/4 | 43 | 98 |
| 51308 | 1 1/4 | 3/4 | 3/4 | 52 | 120 |
| 51310 | 1 1/4 | 3/4 | 5/8 | 43 | 98 |
| 51311 | 1 1/4 | 1 | 9/16 | 31 | 81 |
| 51312 | 1 1/4 | 1 | 9/16 | 38 | 92 |

Standard elastomer is Natural Rubber, (*) indicates Neoprene
Standard inserts are zinc plated, (^) indicates phosphate finish

Stud/Plate Mounts (5/16-18)

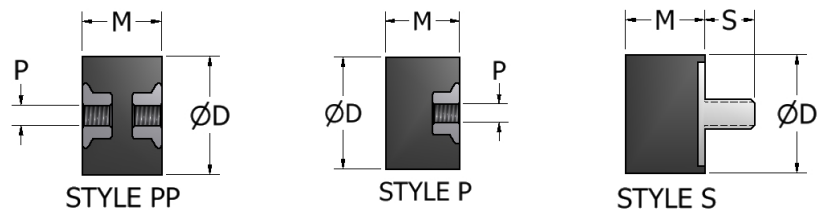


Style SS

| Part No. | D | M | 5/16-18 x S | Max. Shear (lbs.) | Max. Comp. (lbs.) |
|----------|-------|-------|-------------|-------------------|-------------------|
| 51315 | 1 1/4 | 1 | 3/4 | 31 | 81 |
| 51316 | 1 1/4 | 1 | 3/4 | 38 | 92 |
| 51297* | 1 1/4 | 1 1/4 | 5/8 | 27 | 76 |
| 51298* | 1 1/4 | 1 1/4 | 5/8 | 34 | 86 |
| 51299* | 1 1/4 | 1 1/4 | 5/8 | 60 | 120 |
| 51320 | 1 1/4 | 1 1/4 | 9/16 | 21 | 42 |
| 51321 | 1 1/4 | 1 1/4 | 9/16 | 27 | 76 |
| 51322 | 1 1/4 | 1 1/4 | 9/16 | 34 | 86 |
| 51325 | 1 1/4 | 1 1/4 | 3/4 | 27 | 76 |
| 51326 | 1 1/4 | 1 1/4 | 3/4 | 34 | 86 |
| 51337* | 1 1/4 | 1 1/4 | 9/16 | 60 | 120 |
| 51344* | 1 1/4 | 1 1/4 | 7/8 | 27 | 47 |
| 51345 | 1 1/4 | 1 1/4 | 7/8 | 34 | 86 |
| 51349 | 1 1/4 | 1 1/4 | 3/4 | 60 | 120 |
| 51480* | 1 3/8 | 5/8 | 5/8 | 35 | 85 |
| 51481* | 1 3/8 | 5/8 | 5/8 | 45 | 120 |
| 51482* | 1 3/8 | 5/8 | 5/8 | 55 | 155 |
| 51483* | 1 3/8 | 5/8 | 5/8 | 65 | 185 |
| 51484* | 1 3/8 | 5/8 | 5/8 | 75 | 225 |
| 50136* | 1 3/8 | 1 | 1 1/4 | 87 | 125 |
| 51340 | 1 3/8 | 1 | 9/16 | 27 | 47 |
| 51341 | 1 3/8 | 1 | 9/16 | 41 | 74 |
| 51342 | 1 3/8 | 1 | 9/16 | 66 | 96 |
| 51343 | 1 3/8 | 1 | 9/16 | 76 | 105 |
| 51348 | 1 3/8 | 1 | 7/8 - 1 | 66 | 96 |
| 51353* | 1 3/8 | 1 | 3/4 | 27 | 47 |
| 51354* | 1 3/8 | 1 | 3/4 | 41 | 74 |
| 51355* | 1 3/8 | 1 | 3/4 | 66 | 96 |
| 51356* | 1 3/8 | 1 | 3/4 | 76 | 105 |
| 51357* | 1 3/8 | 1 | 3/4 | 87 | 125 |
| 51358 | 1 3/8 | 1 | 3/4 | 76 | 105 |
| 65028*^ | 1 3/8 | 1 | 3/4 | 76 | 105 |
| 51401* | 1 1/2 | 1 | 5/8 | 45 | 185 |
| 51460* | 2 | 1 1/4 | 5/8 | 50 | 150 |
| 51462* | 2 | 1 1/4 | 5/8 | 100 | 250 |

Standard elastomer is Natural Rubber, (*) indicates Neoprene
Standard inserts are zinc plated, (^) indicates phosphate finish

Stud/Plate Mounts (5/16-18)



Style PP

| Part No. | D | M | P | Max. Shear (lbs.) | Max. Comp. (lbs.) |
|----------|-----|-----|---------|-------------------|-------------------|
| 51272* | 1 | 1 | 5/16-18 | 10 | 25 |
| 51275* | 1 | 1 | 5/16-18 | 28 | 65 |
| 51318 | 1 ¼ | 1 ¼ | 5/16-18 | 24 | 42 |
| 51323 | 1 ¼ | 1 ¼ | 5/16-18 | 27 | 76 |
| 51324 | 1 ¼ | 1 ¼ | 5/16-18 | 34 | 86 |
| 50137* | 1 ¾ | 1 | 5/16-18 | 90 | 125 |

P thread depth is minimum one thread diameter

Style P

| Part No. | D | M | P | Max. Shear (lbs.) | Max. Comp. (lbs.) |
|----------|-----|-----|---------|-------------------|-------------------|
| 51254 | 1 | 3/4 | 5/16-18 | - | 44 |
| 51335 | 1 ¼ | 3/4 | 5/16-18 | - | 120 |

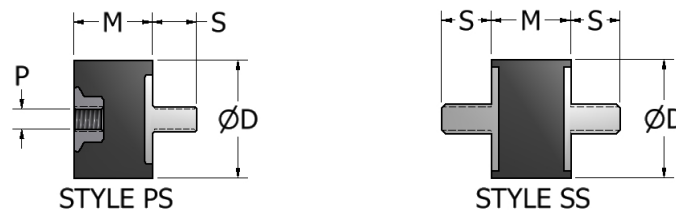
P thread depth is minimum one thread diameter

Style S

| Part No. | D | M | 5/16-18 x S | Max. Shear (lbs.) | Max. Comp. (lbs.) |
|----------|-----|-------|-------------|-------------------|-------------------|
| 50983^ | 1 | 3/8 | 1 1/4 | - | 50 |
| 51255 | 1 | 17/32 | 9/16 | - | 50 |
| 51244 | 1 | 3/4 | 5/8 | - | 58 |
| 50840^ | 1 | 3/4 | 1 1/4 | - | 58 |
| 50818 | 1 | 1 | 5/8 | - | 42 |
| 51331 | 1 ¼ | 3/4 | 3/4 | - | 100 |
| 51332 | 1 ¼ | 3/4 | 3/4 | - | 120 |
| 51334* | 1 ¼ | 3/4 | 9/16 | - | 120 |
| 51336* | 1 ¼ | 3/4 | 1/2 | - | 120 |
| 51319* | 1 ¼ | 1 | 9/16 | - | 120 |
| 51466 | 2 | 1 ¾ | 3/4 | - | 150 |
| 51467 | 2 | 1 ¾ | 3/4 | - | 200 |
| 51468 | 2 | 1 ¾ | 3/4 | - | 250 |
| 51469 | 2 | 1 ¾ | 3/4 | - | 290 |
| 51470 | 2 | 1 ¾ | 3/4 | - | 325 |

Standard elastomer is Natural Rubber, (*) indicates Neoprene
Standard inserts are zinc plated, (^) indicates phosphate finish

Stud/Plate Mounts (3/8-16)



Style PS

| Part No. | D | M | 3/8-16 x S | P | Max. Shear (lbs.) | Max. Comp. (lbs.) |
|----------|-----|-----|------------|--------|-------------------|-------------------|
| 51588* | 1 ½ | 7/8 | 5/8 | 3/8-16 | 70 | 250 |
| 51380 | 1 ½ | 1 | 5/8 | 3/8-16 | 30 | 95 |
| 51381 | 1 ½ | 1 | 5/8 | 3/8-16 | 40 | 135 |
| 51382 | 1 ½ | 1 | 5/8 | 3/8-16 | 50 | 185 |
| 51383 | 1 ½ | 1 | 5/8 | 3/8-16 | 65 | 210 |
| 51384 | 1 ½ | 1 | 5/8 | 3/8-16 | 80 | 270 |
| 50868-1* | 2 ½ | 1 | 7/8 | 3/8-16 | 85 | 200 |
| 50868-2* | 2 ½ | 1 | 7/8 | 3/8-16 | 110 | 250 |
| 50868-3* | 2 ½ | 1 | 7/8 | 3/8-16 | 150 | 325 |
| 50868-4* | 2 ½ | 1 | 7/8 | 3/8-16 | 190 | 425 |
| 50868-5* | 2 ½ | 1 | 7/8 | 3/8-16 | 220 | 500 |

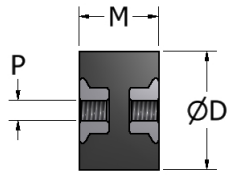
P thread depth is minimum one thread diameter

Style SS

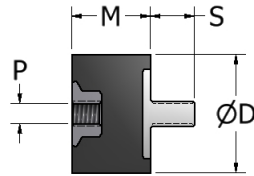
| Part No. | D | M | 3/8-16 x S | Max. Shear (lbs.) | Max. Comp. (lbs.) |
|----------|-----|---|------------|-------------------|-------------------|
| 51390 | 1 ½ | 1 | 5/8 | 30 | 95 |
| 51391 | 1 ½ | 1 | 5/8 | 40 | 135 |
| 51392 | 1 ½ | 1 | 5/8 | 50 | 185 |
| 51393 | 1 ½ | 1 | 5/8 | 65 | 210 |
| 51394 | 1 ½ | 1 | 5/8 | 80 | 270 |
| 51395 | 1 ½ | 1 | 3/4 | 30 | 95 |
| 51396 | 1 ½ | 1 | 3/4 | 40 | 135 |
| 51397 | 1 ½ | 1 | 3/4 | 50 | 185 |
| 51398* | 1 ½ | 1 | 3/4 | 65 | 210 |
| 51399* | 1 ½ | 1 | 3/4 | 80 | 270 |
| 51620-1 | 2 ½ | 1 | 7/8 | 85 | 200 |
| 51620-2 | 2 ½ | 1 | 7/8 | 110 | 250 |
| 51620-3 | 2 ½ | 1 | 7/8 | 150 | 325 |
| 51620-4 | 2 ½ | 1 | 7/8 | 190 | 425 |
| 51620-5 | 2 ½ | 1 | 7/8 | 220 | 500 |

Standard elastomer is Natural Rubber, (*) indicates Neoprene

Stud/Plate Mounts (1/2-13)



STYLE PP



STYLE PS

Style PP

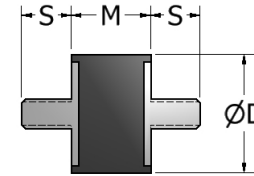
| Part No. | D | M | P (Depth) | Max. Shear (lbs.) | Max. Comp. (lbs.) |
|----------|-------|---------|---------------|-------------------|-------------------|
| 51415* | 2 | 1 11/16 | 1/2-13 (1/2)# | 80 | 180 |
| 51416* | 2 | 1 11/16 | 1/2-13 (1/2)# | 100 | 210 |
| 51417* | 2 | 1 11/16 | 1/2-13 (1/2)# | 150 | 275 |
| 51418* | 2 | 1 11/16 | 1/2-13 (1/2)# | 200 | 340 |
| 51419* | 2 | 1 11/16 | 1/2-13 (1/2)# | 240 | 420 |
| 51553-1* | 3 7/8 | 1 1/2 | 1/2-13 (1/2) | 60 | 450 |
| 51553-2* | 3 7/8 | 1 1/2 | 1/2-13 (1/2) | 90 | 660 |
| 51553-3* | 3 7/8 | 1 1/2 | 1/2-13 (1/2) | 130 | 950 |
| 51553-4* | 3 7/8 | 1 1/2 | 1/2-13 (1/2) | 175 | 1260 |
| 51553-5* | 3 7/8 | 1 1/2 | 1/2-13 (1/2) | 220 | 1550 |
| 51555-1* | 3 7/8 | 3 | 1/2-13 (1/2) | 38 | 250 |
| 51555-2* | 3 7/8 | 3 | 1/2-13 (1/2) | 65 | 410 |
| 51555-3* | 3 7/8 | 3 | 1/2-13 (1/2) | 105 | 690 |
| 51555-4* | 3 7/8 | 3 | 1/2-13 (1/2) | 140 | 910 |
| 51555-5* | 3 7/8 | 3 | 1/2-13 (1/2) | 185 | 1190 |

Style PS

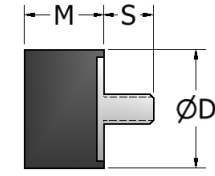
| Part No. | D | M | 1/2-13 x S | P | Max. Shear | Max. Comp. |
|----------|-------|---------|------------|---------------|------------|------------|
| 51386* | 1 1/4 | 1 1/4 | 3/4 | 1/2-13 (3/8) | 38 | 80 |
| 51388* | 1 1/4 | 1 1/4 | 3/4 | 1/2-13 (3/8) | 72 | 130 |
| 51420* | 2 | 1 11/16 | 1 7/8 | 1/2-13 (1/2)# | 70 | 160 |
| 51421* | 2 | 1 11/16 | 1 7/8 | 1/2-13 (1/2)# | 90 | 200 |
| 51422* | 2 | 1 11/16 | 1 7/8 | 1/2-13 (1/2)# | 140 | 260 |
| 51423* | 2 | 1 11/16 | 1 7/8 | 1/2-13 (1/2)# | 185 | 340 |
| 51424* | 2 | 1 11/16 | 1 7/8 | 1/2-13 (1/2)# | 225 | 410 |
| 51551-1* | 3 7/8 | 1 1/2 | 1 5/8 | 1/2-13 (1/2) | 80 | 360 |
| 51551-2* | 3 7/8 | 1 1/2 | 1 5/8 | 1/2-13 (1/2) | 110 | 540 |
| 51551-3* | 3 7/8 | 1 1/2 | 1 5/8 | 1/2-13 (1/2) | 145 | 760 |
| 51551-4* | 3 7/8 | 1 1/2 | 1 5/8 | 1/2-13 (1/2) | 215 | 980 |
| 51551-5* | 3 7/8 | 1 1/2 | 1 5/8 | 1/2-13 (1/2) | 285 | 1815 |
| 51557-1* | 3 7/8 | 3 | 1 5/8 | 1/2-13 (1/2) | 38 | 250 |
| 51557-2* | 3 7/8 | 3 | 1 5/8 | 1/2-13 (1/2) | 65 | 410 |
| 51557-3* | 3 7/8 | 3 | 1 5/8 | 1/2-13 (1/2) | 105 | 690 |
| 51557-4* | 3 7/8 | 3 | 1 5/8 | 1/2-13 (1/2) | 140 | 910 |
| 51557-5* | 3 7/8 | 3 | 1 5/8 | 1/2-13 (1/2) | 185 | 1190 |

Standard elastomer is Natural Rubber, (*) indicates Neoprene, (#) indicates blind insert

Stud/Plate Mounts (1/2-13)



STYLE SS



STYLE S

Style SS

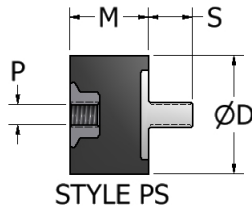
| Part No. | D | M | 1/2-13 x S | Max. Shear (lbs.) | Max. Comp. (lbs.) |
|----------|-------|---------|------------|-------------------|-------------------|
| 51385 | 1 1/4 | 1 1/4 | 3/4 | 29 | 76 |
| 51387* | 1 1/4 | 1 1/4 | 3/4 | 63 | 120 |
| 51410* | 2 | 1 11/16 | 1 1/8 | 60 | 160 |
| 51411* | 2 | 1 11/16 | 1 1/8 | 80 | 200 |
| 51412* | 2 | 1 11/16 | 1 1/8 | 125 | 260 |
| 51413* | 2 | 1 11/16 | 1 1/8 | 175 | 335 |
| 51414* | 2 | 1 11/16 | 1 1/8 | 210 | 400 |
| 51552-1* | 3 7/8 | 1 1/2 | 1 5/8 | 90 | 360 |
| 51552-2* | 3 7/8 | 1 1/2 | 1 5/8 | 120 | 540 |
| 51552-3* | 3 7/8 | 1 1/2 | 1 5/8 | 155 | 760 |
| 51552-4* | 3 7/8 | 1 1/2 | 1 5/8 | 225 | 980 |
| 51552-5* | 3 7/8 | 1 1/2 | 1 5/8 | 295 | 1815 |
| 51556-1* | 3 7/8 | 3 | 1 5/8 | 38 | 250 |
| 51556-2* | 3 7/8 | 3 | 1 5/8 | 65 | 410 |
| 51556-3* | 3 7/8 | 3 | 1 5/8 | 105 | 690 |
| 51556-4* | 3 7/8 | 3 | 1 5/8 | 140 | 910 |
| 51556-5* | 3 7/8 | 3 | 1 5/8 | 185 | 1190 |

Style S

| Part No. | D | M | 1/2-13 x S | Max. Shear (lbs.) | Max. Comp. (lbs.) |
|----------|-------|-----|------------|-------------------|-------------------|
| 50121* | 1 1/4 | 3/4 | 3/4 | - | 90 |
| 50122* | 1 1/4 | 3/4 | 3/4 | - | 150 |

Standard elastomer is Natural Rubber, (*) indicates Neoprene

Stud/Plate Mounts (Metric)

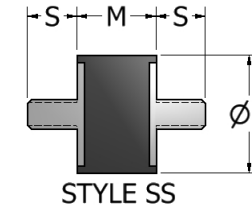


Style PS

| Part No. | D | M | S | P | Max. Shear (lbs.) | Max. Comp. (lbs.) |
|----------|-----|-----|---------------|----------|-------------------|-------------------|
| 50197* | 9.5 | 8 | M3x0.5 x 4 | 6-32 | 3 | 4.5 |
| 50198* | 9.5 | 9.5 | M3x0.5 x 4 | 6-32 | 3 | 4.5 |
| 51095 | 11 | 13 | M4x0.7 x 6 | M4x0.7 | 5 | 8 |
| 51095-1 | 11 | 13 | M4x0.7 x 4 | M4x0.7 | 5 | 8 |
| 51453* | 19 | 16 | M4x0.7 x 10 | M4x0.7 | 25 | 50 |
| 65026-2* | 25 | 13 | M6x1.0 x 13 | M6x1.0 | 32 | 45 |
| 51447* | 25 | 19 | M6x1.0 x 13 | M6x1.0 | 22 | 58 |
| 50805* | 25 | 19 | M6x1.0 x 13 | M6x1.0 | 40 | 80 |
| 50926* | 25 | 25 | M6x1.0 x 11.5 | M6x1.0 | 12 | 35 |
| 50842* | 25 | 25 | M6x1.0 x 19 | M6x1.0 | 8 | 25 |
| 50942* | 25 | 25 | M6x1.0 x 19 | M6x1.0 | 12 | 35 |
| 50952* | 25 | 25 | M6x1.0 x 11.5 | M6x1.0 | 35 | 70 |
| 65011* | 25 | 19 | M8x1.25 x 16 | M8x1.25 | 25 | 60 |
| 51259 | 25 | 19 | M8x1.25 x 14 | M8x1.25 | 40 | 80 |
| 50947-1* | 32 | 32 | M8x1.25 x 14 | M8x1.25 | 35 | 70 |
| 50947-2* | 32 | 32 | M8x1.25 x 14 | M8x1.25 | 50 | 92 |
| 50947-3* | 32 | 32 | M8x1.25 x 14 | M8x1.25 | 65 | 125 |
| 50898*^ | 38 | 25 | M8x1.25 x 14 | M8x1.25 | 80 | 270 |
| 51550-1* | 79 | 38 | M12x1.75 x 41 | M12x1.75 | 80 | 360 |
| 51550-2* | 79 | 38 | M12x1.75 x 41 | M12x1.75 | 110 | 540 |
| 51550-3* | 79 | 38 | M12x1.75 x 41 | M12x1.75 | 145 | 760 |
| 51550-4* | 79 | 38 | M12x1.75 x 41 | M12x1.75 | 215 | 980 |
| 51550-5* | 79 | 38 | M12x1.75 x 41 | M12x1.75 | 285 | 1815 |
| 51554-1* | 79 | 76 | M12x1.75 x 41 | M12x1.75 | 38 | 250 |
| 51554-2* | 79 | 76 | M12x1.75 x 41 | M12x1.75 | 65 | 410 |
| 51554-3* | 79 | 76 | M12x1.75 x 41 | M12x1.75 | 105 | 690 |
| 51554-4* | 79 | 76 | M12x1.75 x 41 | M12x1.75 | 140 | 910 |
| 51554-5* | 79 | 76 | M12x1.75 x 41 | M12x1.75 | 185 | 1190 |

Standard elastomer is Natural Rubber, (*) indicates Neoprene
 P thread depth is minimum one thread diameter
 Standard inserts are zinc plated, (^) indicates phosphat finish

Stud/Plate Mounts (Metric)

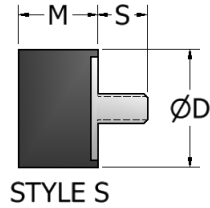
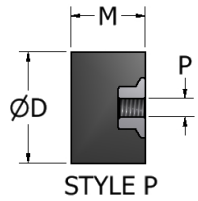


Style SS

| Part No. | D | M | S | S' | Max. Shear (lbs.) | Max. Comp. (lbs.) |
|-----------|----|----|---------------|---------------|-------------------|-------------------|
| 50957* | 11 | 10 | M3x0.5 x 6 | M3x0.5 x 6 | 3 | 5 |
| 51098 | 11 | 13 | M4x0.7 x 6 | M4x0.7 x 6 | 5 | 8 |
| 51487** | 19 | 13 | M6x1.0 x 14 | M6x1.0 x 14 | 12 | 28 |
| 50956* | 25 | 13 | M6x1.0 x 19 | M6x1.0 x 19 | 22 | 45 |
| 50959-1* | 25 | 19 | M6x1.0 x 12 | M6x1.0 x 12 | 15 | 44 |
| 50959-2* | 25 | 19 | M6x1.0 x 12 | M6x1.0 x 12 | 18 | 50 |
| 50959-3* | 25 | 19 | M6x1.0 x 12 | M6x1.0 x 12 | 21 | 55 |
| 50959-4* | 25 | 19 | M6x1.0 x 12 | M6x1.0 x 12 | 25 | 60 |
| 50959-5* | 25 | 19 | M6x1.0 x 12 | M6x1.0 x 12 | 30 | 70 |
| 50845-40* | 19 | 13 | M6x1.0 x 22 | M6x1.0 x 14 | 18 | 50 |
| 50819* | 25 | 19 | M8x1.25 x 13 | M8x1.25 x 13 | 21 | 55 |
| 51445* | 25 | 19 | M8x1.25 x 14 | M8x1.25 x 14 | 40 | 80 |
| 51281* | 25 | 19 | M8x1.25 x 20 | M8x1.25 x 20 | 20 | 54 |
| 65005* | 25 | 19 | M8x1.25 x 16 | M8x1.25 x 10 | 25 | 60 |
| 50787* | 25 | 19 | M8x1.25 x 20 | M8x1.25 x 10 | 40 | 80 |
| 50988* | 32 | 32 | M8x1.25 x 25 | M8x1.25 x 25 | 27 | 76 |
| 50785* | 35 | 25 | M8x1.25 x 20 | M8x1.25 x 20 | 41 | 74 |
| 50900* | 64 | 25 | M10x1.5 x 23 | M10x1.5 x 23 | 110 | 250 |
| 51549-1* | 79 | 38 | M12x1.75 x 41 | M12x1.75 x 41 | 90 | 360 |
| 51549-2* | 79 | 38 | M12x1.75 x 41 | M12x1.75 x 41 | 120 | 540 |
| 51549-3* | 79 | 38 | M12x1.75 x 41 | M12x1.75 x 41 | 155 | 760 |
| 51549-4* | 79 | 38 | M12x1.75 x 41 | M12x1.75 x 41 | 225 | 980 |
| 51549-5* | 79 | 38 | M12x1.75 x 41 | M12x1.75 x 41 | 295 | 1815 |
| 51561-1* | 79 | 76 | M12x1.75 x 41 | M12x1.75 x 41 | 38 | 250 |
| 51561-2* | 79 | 76 | M12x1.75 x 41 | M12x1.75 x 41 | 65 | 410 |
| 51561-3* | 79 | 76 | M12x1.75 x 41 | M12x1.75 x 41 | 105 | 690 |
| 51561-4* | 79 | 76 | M12x1.75 x 41 | M12x1.75 x 41 | 140 | 910 |
| 51561-5* | 79 | 76 | M12x1.75 x 41 | M12x1.75 x 41 | 185 | 1190 |

Standard elastomer is Natural Rubber, (*) indicates Neoprene, (**) indicates Nitrile

Stud/Plate Mounts (Metric)



Style P

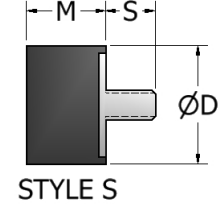
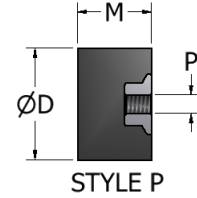
| Part No. | D | M | P | Max. Shear (lbs.) | Max. Comp. (lbs.) |
|----------|----|----|----------|-------------------|-------------------|
| 51075 | 19 | 13 | M5 x 0.8 | - | 35 |
| 50955* | 19 | 13 | M6 x 1.0 | - | 35 |

Style S

| Part No. | D | M | S | Max. Shear (lbs.) | Max. Comp. (lbs.) |
|----------|----|------|--------------|-------------------|-------------------|
| 50833* | 25 | 9.5 | M6x1.0 x 13 | - | 35 |
| 50841* | 25 | 21.5 | M6x1.0 x 19 | - | 40 |
| 50941* | 25 | 21.5 | M6x1.0 x 19 | - | 55 |
| 50834 | 38 | 25 | M8x1.25 x 14 | - | 270 |

Standard elastomer is Natural Rubber, (*) indicates Neoprene

Silicone Stud/Plate Mounts



Style P

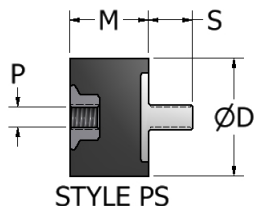
| Part No. | D | M | P | Max. Shear (lbs.) | Max. Comp. (lbs.) |
|----------|-----|-----|---------|-------------------|-------------------|
| 50790-1 | 1 | 3/4 | 1/4-20 | - | 25 |
| 50790-5 | 1 | 3/4 | 1/4-20 | - | 90 |
| 50792-1 | 1 ½ | 1 | 5/16-18 | - | 60 |
| 50792-5 | 1 ½ | 1 | 5/16-18 | - | 225 |

Style S

| Part No. | D | M | S | Max. Shear (lbs.) | Max. Comp. (lbs.) |
|----------|-----|-----|---------------|-------------------|-------------------|
| 50789-1 | 1 | 3/4 | 1/4-20 x 1/2 | - | 25 |
| 50789-5 | 1 | 3/4 | 1/4-20 x 1/2 | - | 90 |
| 50791-1 | 1 ½ | 1 | 5/16-18 x 5/8 | - | 60 |
| 50791-5 | 1 ½ | 1 | 5/16-18 x 5/8 | - | 225 |

Note: Operating temperature range for Silicone mounts is -80° to 300°F

Silicone Stud/Plate Mounts



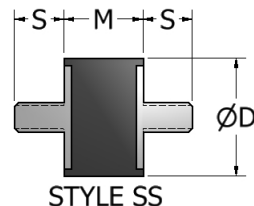
STYLE PS

Style PS

| Part No. | D | M | S | P | Max. Shear (lbs.) | Max. Comp. (lbs.) |
|----------|-----|-----|----------------|---------|-------------------|-------------------|
| 50861-1 | 1 | 3/4 | 1/4-20 x 1/2 | 1/4-20 | 8 | 25 |
| 50861-2 | 1 | 3/4 | 1/4-20 x 1/2 | 1/4-20 | 12 | 35 |
| 50861-3 | 1 | 3/4 | 1/4-20 x 1/2 | 1/4-20 | 16 | 50 |
| 50861-4 | 1 | 3/4 | 1/4-20 x 1/2 | 1/4-20 | 22 | 65 |
| 50861-5 | 1 | 3/4 | 1/4-20 x 1/2 | 1/4-20 | 30 | 90 |
| 50862-1 | 1 ¼ | 3/4 | 5/16-18 x 5/8 | 5/16-18 | 12 | 50 |
| 50862-2 | 1 ¼ | 3/4 | 5/16-18 x 5/8 | 5/16-18 | 22 | 75 |
| 50862-3 | 1 ¼ | 3/4 | 5/16-18 x 5/8 | 5/16-18 | 30 | 100 |
| 50862-4 | 1 ¼ | 3/4 | 5/16-18 x 5/8 | 5/16-18 | 40 | 150 |
| 50862-5 | 1 ¼ | 3/4 | 5/16-18 x 5/8 | 5/16-18 | 55 | 180 |
| 50863-1 | 1 ½ | 1 | 5/16-18 x 5/8 | 5/16-18 | 15 | 60 |
| 50863-2 | 1 ½ | 1 | 5/16-18 x 5/8 | 5/16-18 | 20 | 90 |
| 50863-3 | 1 ½ | 1 | 5/16-18 x 5/8 | 5/16-18 | 30 | 125 |
| 50863-4 | 1 ½ | 1 | 5/16-18 x 5/8 | 5/16-18 | 45 | 175 |
| 50863-5 | 1 ½ | 1 | 5/16-18 x 5/8 | 5/16-18 | 55 | 225 |
| 50860-1 | 1 | 3/4 | M6x1.0 x 12mm | M6x1.0 | 8 | 25 |
| 50860-2 | 1 | 3/4 | M6x1.0 x 12mm | M6x1.0 | 12 | 35 |
| 50860-3 | 1 | 3/4 | M6x1.0 x 12mm | M6x1.0 | 16 | 50 |
| 50860-4 | 1 | 3/4 | M6x1.0 x 12mm | M6x1.0 | 22 | 65 |
| 50860-5 | 1 | 3/4 | M6x1.0 x 12mm | M6x1.0 | 30 | 90 |
| 65012-1 | 1 ¼ | 3/4 | M8x1.25 x 16mm | M8x1.25 | 12 | 50 |
| 65012-2 | 1 ¼ | 3/4 | M8x1.25 x 16mm | M8x1.25 | 22 | 75 |
| 65012-3 | 1 ¼ | 3/4 | M8x1.25 x 16mm | M8x1.25 | 30 | 100 |
| 65012-4 | 1 ¼ | 3/4 | M8x1.25 x 16mm | M8x1.25 | 40 | 150 |
| 65012-5 | 1 ¼ | 3/4 | M8x1.25 x 16mm | M8x1.25 | 55 | 180 |
| 65013-1 | 1 ½ | 1 | M8x1.25 x 16mm | M8x1.25 | 15 | 60 |
| 65013-2 | 1 ½ | 1 | M8x1.25 x 16mm | M8x1.25 | 20 | 90 |
| 65013-3 | 1 ½ | 1 | M8x1.25 x 16mm | M8x1.25 | 30 | 125 |
| 65013-4 | 1 ½ | 1 | M8x1.25 x 16mm | M8x1.25 | 45 | 175 |
| 65013-5 | 1 ½ | 1 | M8x1.25 x 16mm | M8x1.25 | 55 | 225 |

Note: Operating temperature range for Silicone mounts is -80° to 300°F

Silicone Stud/Plate Mounts



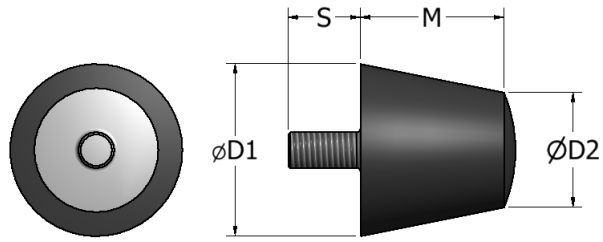
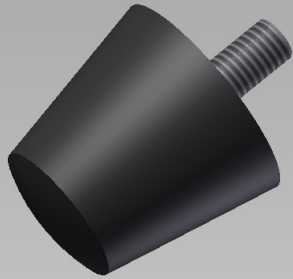
STYLE SS

Style SS

| Part No. | D | M | S | Max. Shear (lbs.) | Max. Comp. (lbs.) |
|----------|-----|-----|----------------|-------------------|-------------------|
| 50869-1 | 1 | 1/2 | 1/4-20 x 1/2 | 8 | 40 |
| 50869-2 | 1 | 1/2 | 1/4-20 x 1/2 | 12 | 60 |
| 50869-3 | 1 | 1/2 | 1/4-20 x 1/2 | 16 | 80 |
| 50869-4 | 1 | 1/2 | 1/4-20 x 1/2 | 20 | 100 |
| 50869-5 | 1 | 1/2 | 1/4-20 x 1/2 | 28 | 140 |
| 50870-1 | 1 | 3/4 | 1/4-20 x 1/2 | 8 | 25 |
| 50870-2 | 1 | 3/4 | 1/4-20 x 1/2 | 12 | 35 |
| 50870-3 | 1 | 3/4 | 1/4-20 x 1/2 | 16 | 50 |
| 50870-4 | 1 | 3/4 | 1/4-20 x 1/2 | 22 | 65 |
| 50870-5 | 1 | 3/4 | 1/4-20 x 1/2 | 30 | 90 |
| 50871-1 | 1 ¼ | 3/4 | 5/16-18 x 5/8 | 12 | 50 |
| 50871-2 | 1 ¼ | 3/4 | 5/16-18 x 5/8 | 22 | 75 |
| 50871-3 | 1 ¼ | 3/4 | 5/16-18 x 5/8 | 30 | 100 |
| 50871-4 | 1 ¼ | 3/4 | 5/16-18 x 5/8 | 40 | 150 |
| 50871-5 | 1 ¼ | 3/4 | 5/16-18 x 5/8 | 55 | 180 |
| 50872-1 | 1 ½ | 1 | 5/16-18 x 5/8 | 15 | 60 |
| 50872-2 | 1 ½ | 1 | 5/16-18 x 5/8 | 20 | 90 |
| 50872-3 | 1 ½ | 1 | 5/16-18 x 5/8 | 30 | 125 |
| 50872-4 | 1 ½ | 1 | 5/16-18 x 5/8 | 45 | 175 |
| 50872-5 | 1 ½ | 1 | 5/16-18 x 5/8 | 55 | 225 |
| 50873-1 | 1 | 3/4 | M6x1.0 x 12mm | 8 | 25 |
| 50873-2 | 1 | 3/4 | M6x1.0 x 12mm | 12 | 35 |
| 50873-3 | 1 | 3/4 | M6x1.0 x 12mm | 16 | 50 |
| 50873-4 | 1 | 3/4 | M6x1.0 x 12mm | 22 | 65 |
| 50873-5 | 1 | 3/4 | M6x1.0 x 12mm | 30 | 90 |
| 65016-1 | 1 ¼ | 3/4 | M8x1.25 x 16mm | 12 | 50 |
| 65016-2 | 1 ¼ | 3/4 | M8x1.25 x 16mm | 22 | 75 |
| 65016-3 | 1 ¼ | 3/4 | M8x1.25 x 16mm | 30 | 100 |
| 65016-4 | 1 ¼ | 3/4 | M8x1.25 x 16mm | 40 | 150 |
| 65016-5 | 1 ¼ | 3/4 | M8x1.25 x 16mm | 55 | 180 |
| 65017-1 | 1 ½ | 1 | M8x1.25 x 16mm | 15 | 60 |
| 65017-2 | 1 ½ | 1 | M8x1.25 x 16mm | 20 | 90 |
| 65017-3 | 1 ½ | 1 | M8x1.25 x 16mm | 30 | 125 |
| 65017-4 | 1 ½ | 1 | M8x1.25 x 16mm | 45 | 175 |
| 65017-5 | 1 ½ | 1 | M8x1.25 x 16mm | 55 | 225 |

Note: Operating temperature range for Silicone mounts is -80° to 300°F

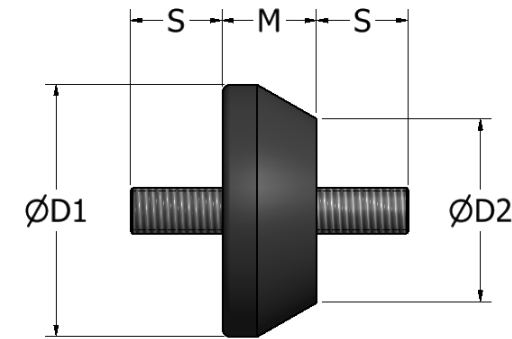
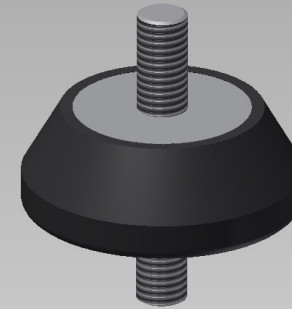
Conical Bumpers



| Part No. | D1 | D2 | M | 5/16-18 x S | Max. Shear (lbs.) | Max. Comp. (lbs.) |
|----------------------|-----|----|-----|----------------|-------------------|-------------------|
| 51360* | 1 ½ | 1 | 1 ¼ | 9/16 | 44 | 90 |
| 51361 | | | | 9/16 | 49 | 100 |
| 51362 | | | | 9/16 | 56 | 125 |
| 51363* | | | | 9/16 | 62 | 150 |
| 51364* | | | | ¾ | 45 | 95 |
| 51365* | | | | ¾ | 62 | 150 |
| 51366* | | | | 1 ⅛ | 56 | 125 |
| 51367* | | | | 1 ⅛ | 44 | 90 |
| 50799-N | | | | M8x1.25 x 16mm | 44 | 90 |
| 50799-S ⁺ | | | | M8x1.25 x 16mm | 44 | 90 |

Standard elastomer is Natural Rubber, (*) indicates Neoprene, (+) indicates Silicone

Conical Stud/Plate Mounts



1/2-13

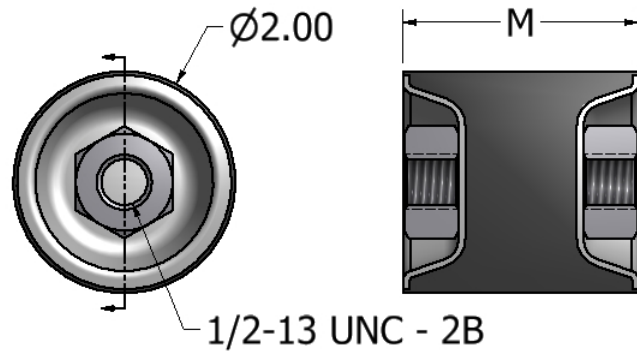
| Part No. | D1 | D2 | M | S | Max. Shear (lbs.) | Max. Comp. (lbs.) |
|----------|-----|----|-----|-----|-------------------|-------------------|
| 50144* | 2 ¾ | 2 | 1 ⅓ | 1 ¼ | 140 | 260 |
| 50145* | | | | 1 ¼ | 165 | 340 |
| 50146* | | | | 1 ¼ | 190 | 430 |
| 50151 | | | | 1 | 140 | 260 |
| 50152 | | | | 1 | 165 | 340 |
| 50153 | | | | 1 | 190 | 430 |

Standard elastomer is Natural Rubber, (*) indicates Neoprene

1/2-20

| Part No. | D1 | D2 | M | S | Max. Shear (lbs.) | Max. Comp. (lbs.) |
|----------|-----|----|-----|-------|-------------------|-------------------|
| 50148 | 2 ¾ | 2 | 1 ⅓ | 29/32 | 140 | 260 |
| 50149 | | | | 29/32 | 165 | 340 |
| 50150 | | | | 29/32 | 190 | 430 |

Dish End Plate/Plate Mounts

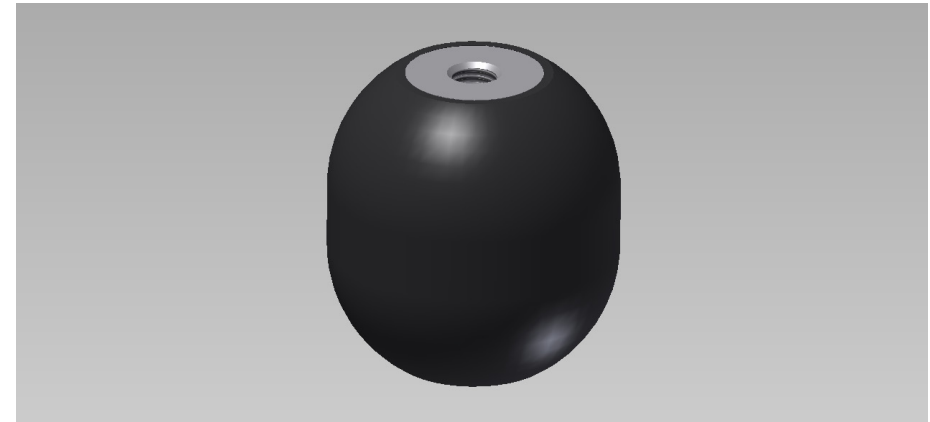


| Part No. | M | Max. Shear (lbs.) | Shear Stiffness (lbs./in.) | Max. Comp. (lbs.) | Comp. Stiffness (lbs./in.) |
|----------|-------|-------------------|----------------------------|-------------------|----------------------------|
| 51496-1N | 1 3/4 | 45 | 210 | 95 | 1200 |
| 51496-2N | 1 3/4 | 55 | 280 | 130 | 1625 |
| 51496-3N | 1 3/4 | 85 | 420 | 190 | 2375 |
| 51496-4N | 1 3/4 | 130 | 650 | 290 | 3625 |
| 51497-1N | 2 1/8 | 30 | 150 | 90 | 735 |
| 51497-2N | 2 1/8 | 45 | 220 | 115 | 960 |
| 51497-3N | 2 1/8 | 60 | 290 | 165 | 1375 |
| 51497-4N | 2 1/8 | 100 | 485 | 265 | 2200 |
| 51498-1N | 2 5/8 | 20 | 100 | 85 | 520 |
| 51498-2N | 2 5/8 | 27 | 135 | 110 | 675 |
| 51498-3N | 2 5/8 | 37 | 180 | 170 | 1050 |
| 51498-4N | 2 5/8 | 65 | 315 | 260 | 1625 |

Elastomer = Neoprene

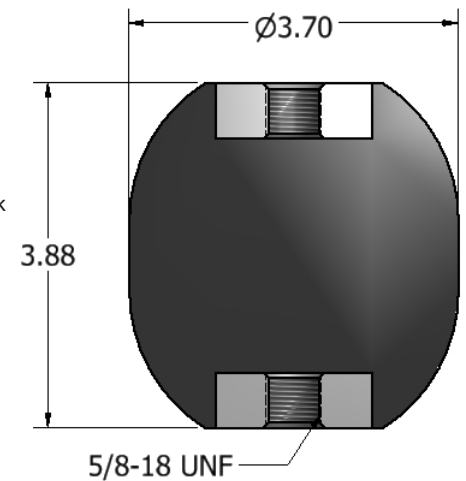
Inserts = Low Carbon Steel (Optional Stainless Steel Available)

Isosphere Mounts



Isosphere mounts are designed to carry loads in compression. A near spherical shape is formed when the load is applied. The distinguishing non-linear stiffness characteristics make these mounts ideal for vibration isolation over a broad range of frequencies. Shock loads are isolated equally as well. Internal snubbing of a shock load occurs as deflection increases the stiffness of the mount. Applications include suspension systems spring elements, shock mounts, shaker screen springs, bumpers, and snubbers.

- Neoprene and zinc plated steel construction
- Non-Linear Stiffness characteristics
- Excellent Shock attenuation



| Part No. | Color Code | Max. Static Load (lbs) | Max Dynamic Load (lbs) | Dynamic Spring Rate (lbs/in) |
|----------|------------|------------------------|------------------------|------------------------------|
| 61549-2 | Black | 500 | 2000 | 1500 |
| 61549-3 | Green | 750 | 3000 | 2000 |
| 61549-4 | Red | 1000 | 4000 | 3000 |
| 61549-5 | Gray | 2000 | 8000 | 5500 |